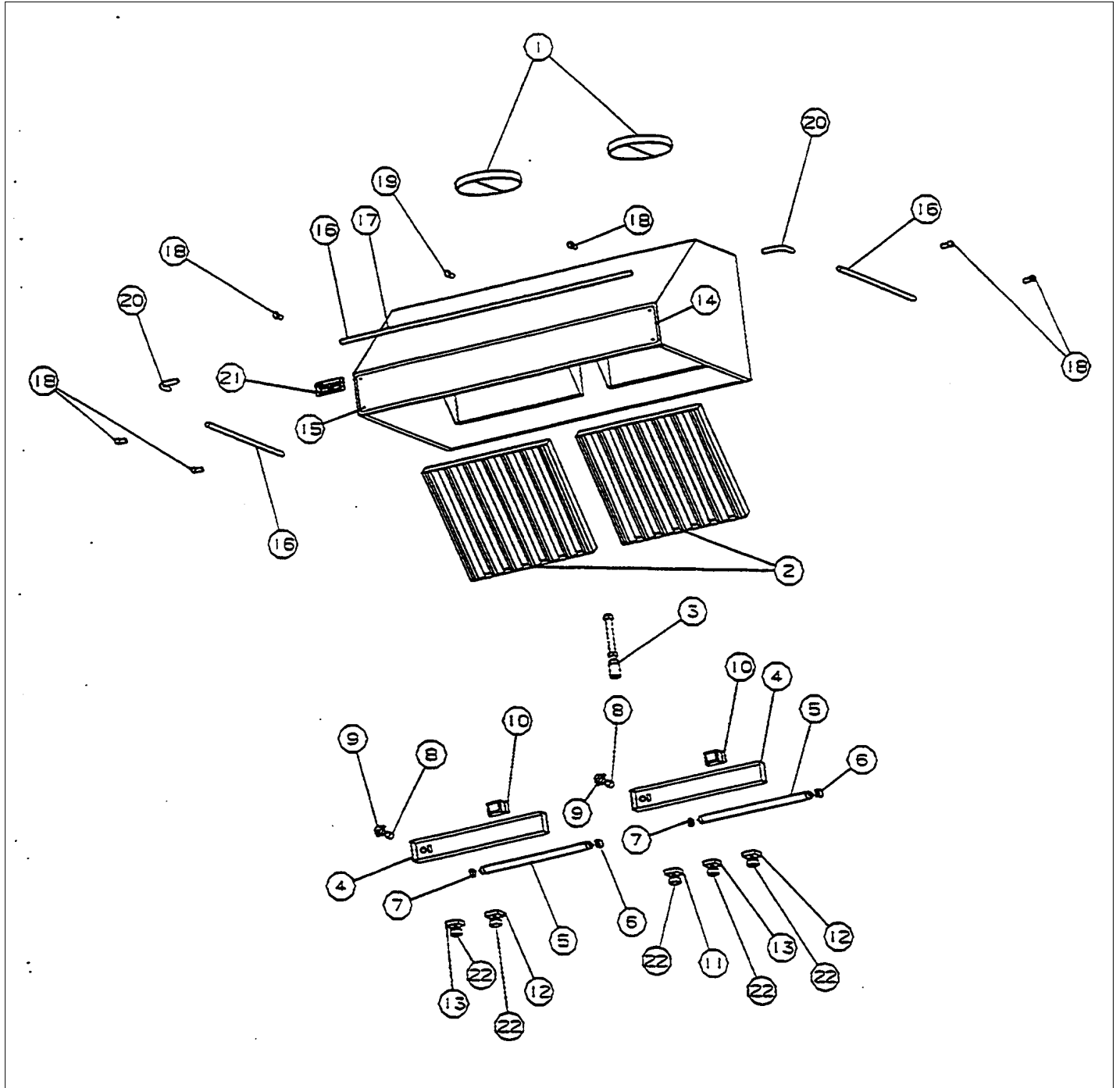


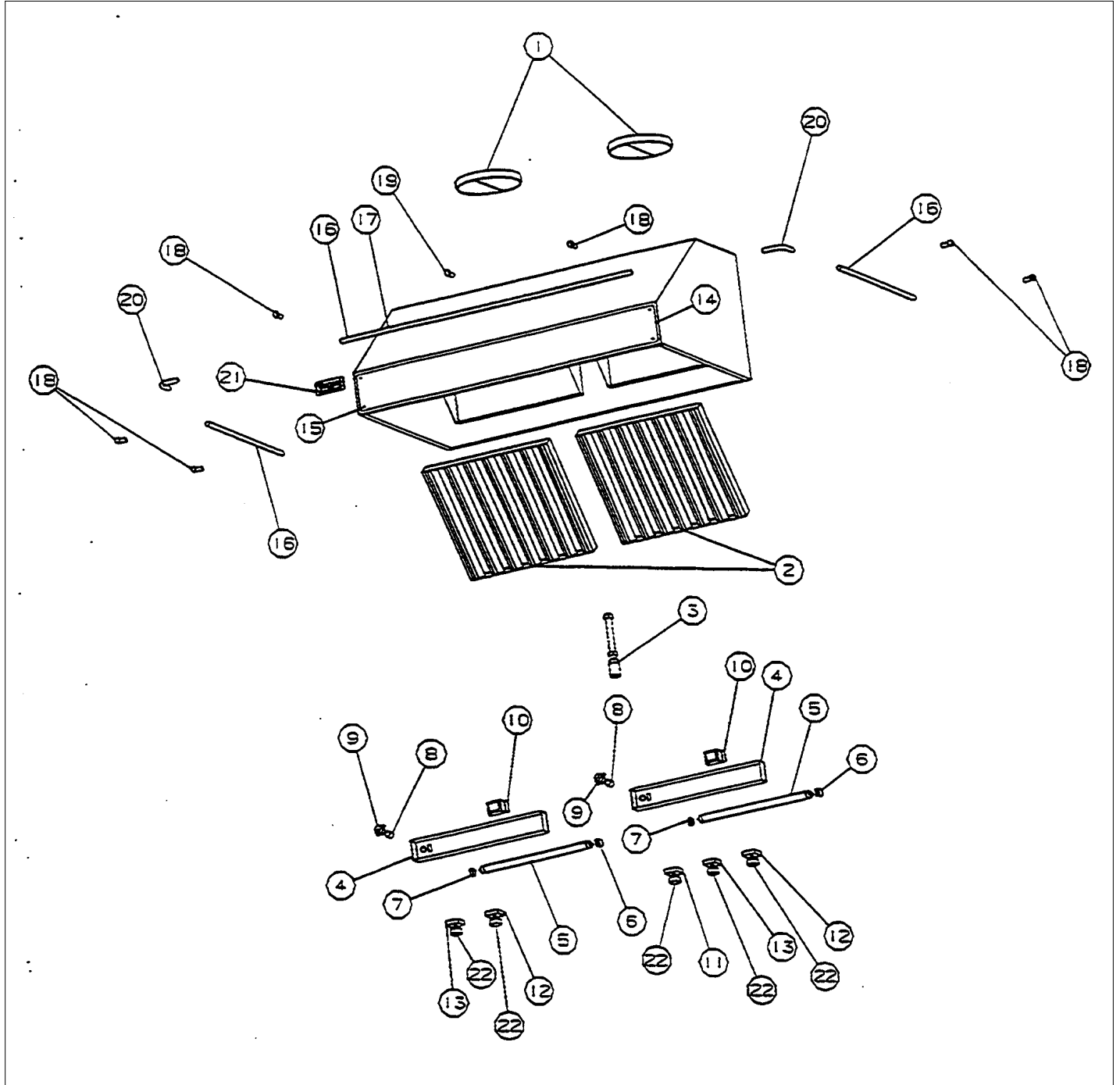
VRHW300-EP

VRHW 300-EP	1
Appendix A:Pages Index	A
Appendix B:Parts Index	B





Item	Part No.	Name	Qty	Uom	NOTES
1	PV110016	BACK DRAFT DAMPER (WITH 9" COLLAR) BD9	1	EA	
2	PV120004	BAFFLE FILTER P1506	1	EA	
3	PV100002	HEAT LAMP SOCKET (OPTIONAL)	1	EA	NO LONGER AVAILABLE
4	PV110007	LIGHT ASSEMBLY (COMPLETE) P-1016	1	EA	
5	PV110008	FLUORESCENT LAMP	1	EA	
6	PV100023	FLUORESCENT LAMP SOCKET-R.H.	1	EA	
7	PV100024	FLUORESCENT LAMP SOCKET-L.H.	1	EA	
8	PV120002	STARTER	1	EA	
9	PV100003	STARTER SOCKET	1	EA	
10	PV120003	BALLAST (SP2)	1	EA	
11	PV120005	ROTARY SWITCH (FOR HEAT LAMPS)	1	EA	
12	PV120006	ROTARY SWITCH (FOR REMOTE LIGHTS)	1	EA	
13	PV120007	VARIABLE SPEED SWITCH (FOR BLOWER) P-1404	1	EA	
14	PV100013SS	FRONT TRIM (30") STAINLESS	1	EA	NO LONGER AVAILABLE, Not available online / Call for pricing and availability
Not Shown	PV100013BR	FRONT TRIM (30") BRASS	1	EA	NO LONGER AVAILABLE, Not available online / Call for pricing and availability
15	PV100022SS	POP RIVET (FOR FRONT TRIM) STAINLES	1	EA	
Not Shown	PV100022BR	POP RIVET (FOR FRONT TRIM) BRASS	1	EA	NO LONGER AVAILABLE, Not available online / Call for pricing and availability
16	PV100007SS	SUB TO PE030066 - SS 4" ACCESSORY RAIL	1	EA	NO LONGER AVAILABLE
Not Shown	PV100007BR	SUB TO PE030067 - BR 4" ACCESSORY RAIL	1	EA	NO LONGER AVAILABLE, Not available online / Call for pricing and availability





Item	Part No.	Name	Qty	Uom	NOTES
17	PV100008SS	SUB TO PE030068 - SS 6" ACCESSORY RAIL	1	EA	NO LONGER AVAILABLE, Not available online / Call for pricing and availability
Not Shown	PV100008BR	SUB TO PE030069 - BR 6" ACCESSORY RAIL	1	EA	NO LONGER AVAILABLE, Not available online / Call for pricing and availability
18	PE030054	END CAP - SS	1	EA	
Not Shown	PV100009BR	SUB TO PE030053 - END CAP (BRASS)	1	EA	NO LONGER AVAILABLE, Not available online / Call for pricing and availability
19	PE030052	SUPPORT TUBE, HOLE THROUGH	1	EA	
Not Shown	PE030055	END CAP - BR	1	EA	
20	PE030056	90 DEG.ELBOWSS REPL PV100011SS	1	EA	
Not Shown	PE030057	90 DEG.ELBOW BR REPL PV100011BR	1	EA	
NI	PE030076	CHROME "S" HOOKS REPL PV100012SS	1	EA	
Not Shown	PE030077	BR 'S' HOOKS REPL PV100012BR	1	EA	
21	PE010020	LOGO - PROFESSIONAL - VRTR, *BK* ASSY	1	EA	
Not Shown	PE010019	LOGO - PROFESSIONAL - VRTR, *WH*	1	EA	
Not Shown	PE010056	2" LOGO/VIKING "PROF" *BK**BR*	1	EA	NO LONGER AVAILABLE
Not Shown	PE010055	2" LOGO/VIKING "PROF" *WH**BR*	1	EA	NO LONGER AVAILABLE
22	PV120008	ROTARY SWITCH KNOB	1	EA	



Appendix A:Pages Index

VRHW 300-EP 1



Appendix B:Parts Index

PE010019	1
PE010020	1
PE010055	1
PE010056	1
PE030052	1
PE030054	1
PE030055	1
PE030056	1
PE030057	1
PE030076	1
PE030077	1
PV100002	1
PV100003	1
PV100007BR	1
PV100007SS	1
PV100008BR	1
PV100008SS	1
PV100009BR	1
PV100013BR	1
PV100013SS	1
PV100022BR	1
PV100022SS	1
PV100023	1
PV100024	1
PV110007	1
PV110008	1
PV110016	1
PV120002	1
PV120003	1
PV120004	1
PV120005	1
PV120006	1
PV120007	1
PV120008	1