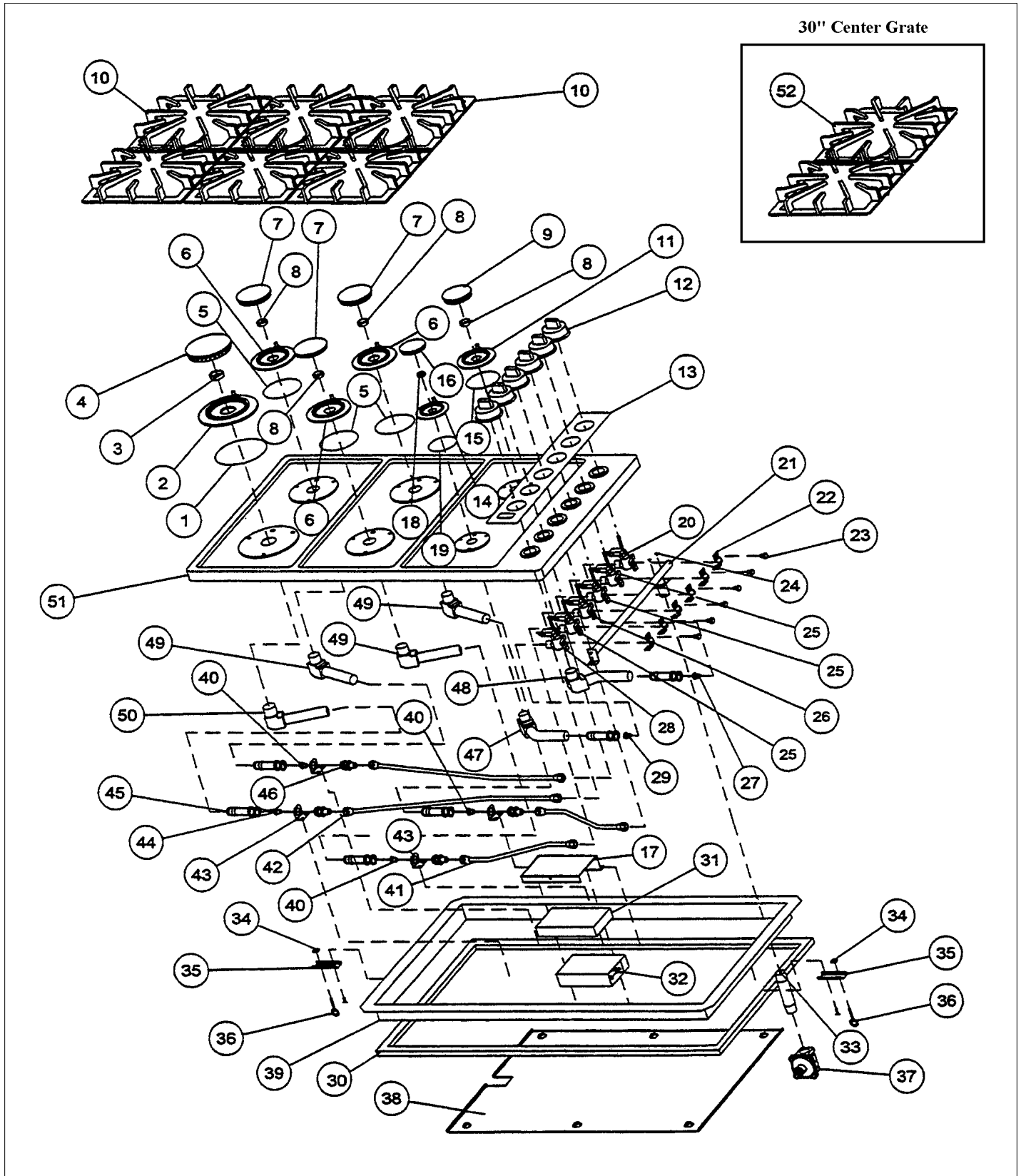


**VGSU101**

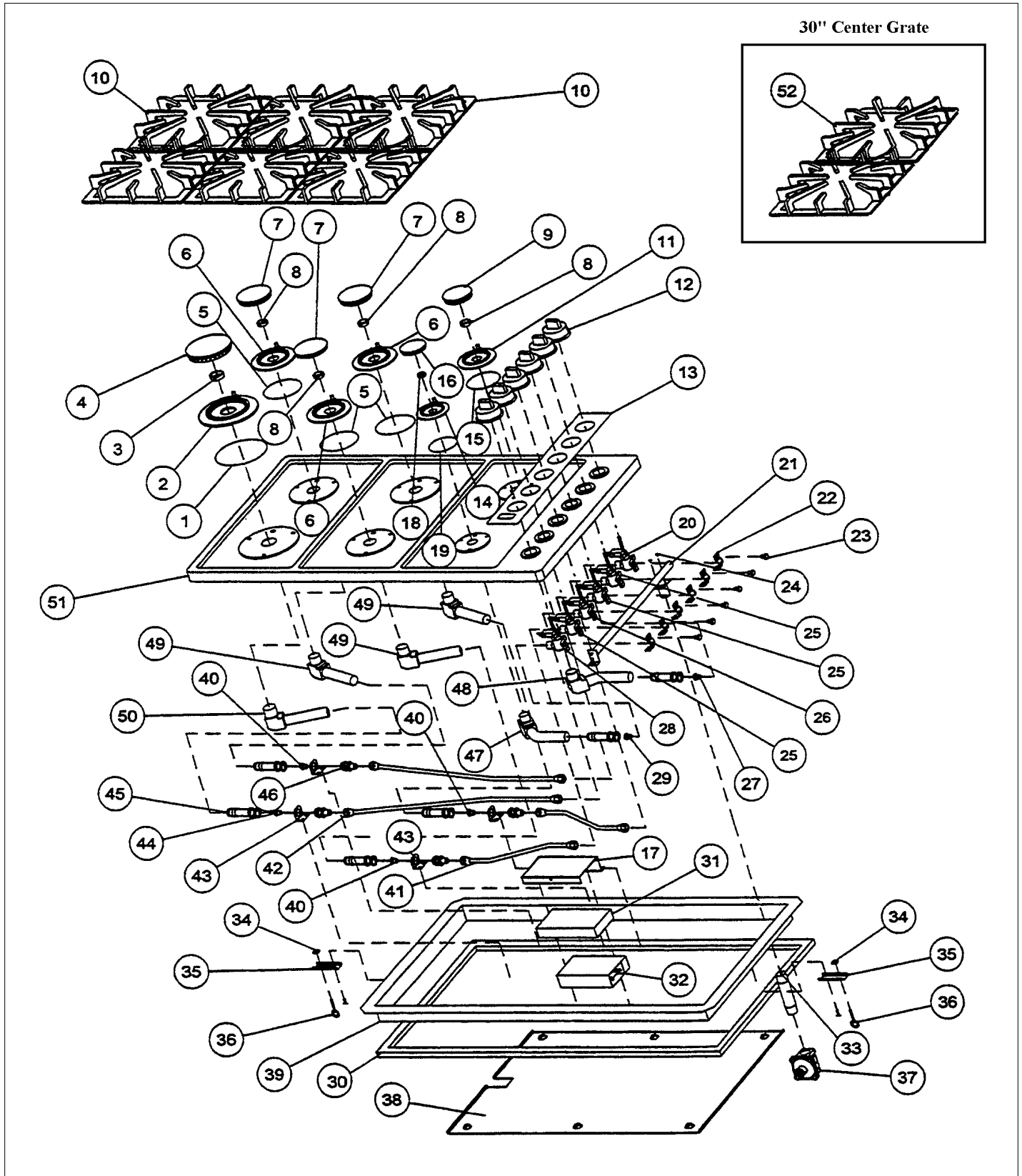
VGSU 101 .....	1
Appendix A:Pages Index .....	A
Appendix B:Parts Index .....	B



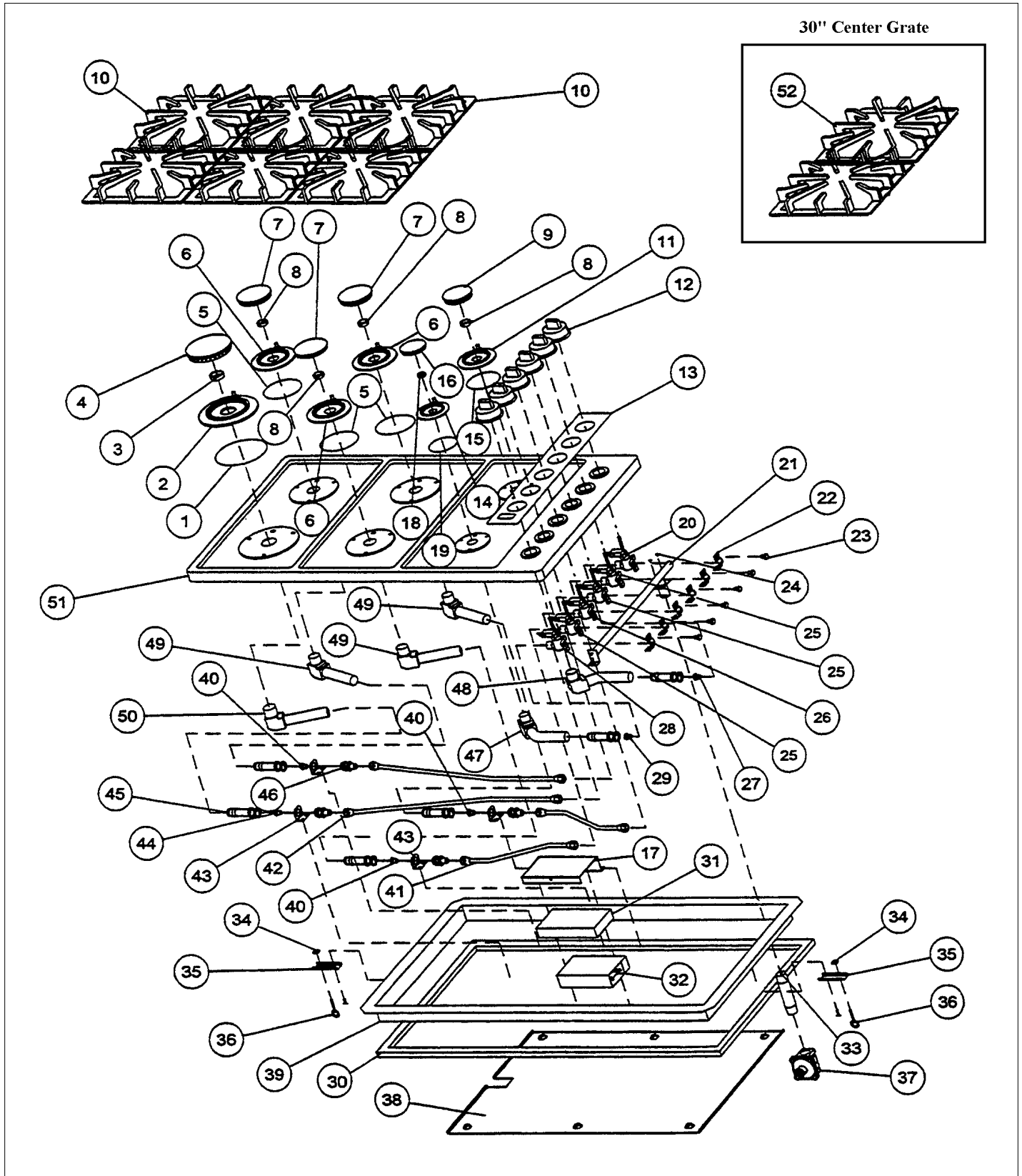




Item	Part No.	Name	Qty	Uom	NOTES
1	PB070063	Burner O-Ring (Front - Left Burner)	1	EA	
Comments for Part Num. PB070063					
parts@dtappliance.com on Sep 7, 2016					
This part is now NLA					
2	PB050032	Burner Base (Left Front)	1	EA	
3	PD030037	Retainer Ring (Left Front)	1	EA	
4	PA080088	Burner - 14,000 BTU (Left Front) - BK	1	EA	
Not Shown	PA080092	Burner Head - 14,000 BTU (Left Front) - GR	1	EA	
5	PB070062	Burner O-Ring (Front & Rear Center / Rear Left)	1	EA	
6	PB050033	Burner Base (Front & Rear Center / Rear Left)	1	EA	
7	PA080089	Burner-12,000 BTU(Front/Rear Center, Rear Left)-BK	1	EA	
Not Shown	PA080093	Burner-12,000 BTU(Front/Rear Center, Rear Left)-GR	1	EA	
8	PD030038	Retainer Ring (Right / Left Rear - Center Front / Rear	1	EA	
9	PA080090	Burner - 9,000 BTU (Right Rear) - BK	1	EA	
Not Shown	PA080094	Burner - 9,000 BTU (Right Rear) - GR	1	EA	
10	PA060032	Spider Grate - Black	1	EA	
Not Shown	PA060033	Spider Grate - Grey	1	EA	
11	PB050034	Burner Base (Right Rear)	1	EA	
12	G5003075BK	KNOB ASSEMBLY (VGSU101/161) BK/CHROME	1	EA	
Not Shown	NOTE	(INCLUDES KNOB, BEZEL, AND CLIP)		EA	
12	PB010154	Top Burner Knob - BK	1	EA	
Not Shown	PB010155	Top Burner Knob - WH	1	EA	
NI	PB010152	Bezel - SS	1	EA	
Not Shown	PB010153	Bezel - BR	1	EA	



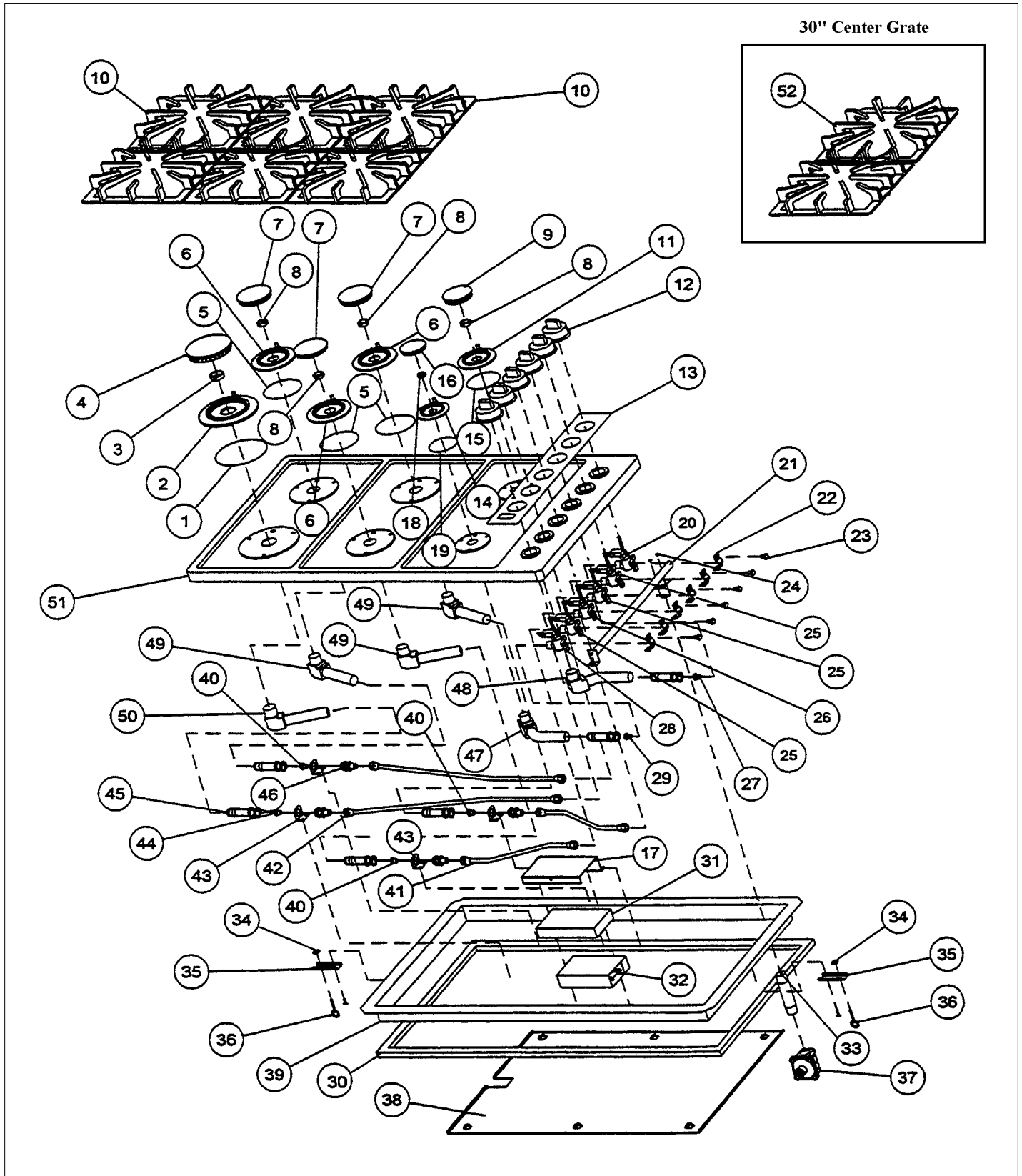
Item	Part No.	Name	Qty	Uom	NOTES
NI	PD030042	SELF RETAINING CLIP (KNOB)#03-30135	1	EA	
13	PE040067	CTRL PAN-SS/BK-LOGO (VGSU101)	1	EA	
Not Shown	PE040068	CTRL PAN-SS/WH-LOGO (VGSU101)	1	EA	NO LONGER AVAILABLE, Not available online / Call for pricing and availability
14	PB050035	Burner Base (Right Front)	1	EA	
15	PB070061	Burner O-Ring (Right Rear Burner)	1	EA	
16	PA080091	Burner - 6,000 BTU (Right Front) - BK	1	EA	
Not Shown	PA080095	Burner - 6,000 BTU (Right Front) - GR	1	EA	
17	A2003054	SPARK MODULE COVER (VGSU101)	1	EA	
18	PD030039	Retainer Ring (Right Front)	1	EA	
19	PB070060	Burner O-Ring (Front Right Burner)	1	EA	
20	PA010061	Valves (Right Rear)	1	EA	
21	PA050051	MANIFOLD (VGSU101)- 01-036-329	1	EA	
22	PB070059	Valve Clamp	1	EA	
23	PD010029	Bolt, M5 X 10 Pan. MS.	1	EA	
24	PD020006	' #6-32 X 1/4" PH.PAN HD. T(F)	1	EA	
25	027447-000	VALVE, COOKTOP - NLA	1	EA	
26	027447-000	VALVE, COOKTOP - NLA	1	EA	
27	PG230031	Orifice #55 (Nat.)	1	EA	
Not Shown	PG230036	Orifice #65 (L.P.)	1	EA	
28	PA010060	Valves (Right Front)	1	EA	
29	PG230032	Orifice #58 (Nat.)	1	EA	
Not Shown	PG230036	Orifice #65 (L.P.)	1	EA	
30	PB070058	Cooktop Gasket	1	EA	
31	PB070034	INSULATION-TRS-10 1" X 20" X 77' ROLL	1	EA	
32	PA020041	TYTRONICS 0+4 SPARK MODULE	1	EA	See 2018-02P







Item	Part No.	Name	Qty	Uom	NOTES
33	PA050033	PIPE NIPPLE - 1/2" X 3"	1	EA	
34	PD030029	SELF RETAINING NUT (1/4-20)	1	EA	
35	A2003053	Retainer Bracket	1	EA	
36	PD010027	EYE BOLT-VGSU101/161	1	EA	
37	PA070004	Pressure Regulator (Nat.)	1	EA	
Not Shown	PA070005	PRESSURE REG.(LP) RV47L-77-10.0	1	EA	
38	A2003051	HEAT SHIELD-VGSU101	1	EA	NO LONGER AVAILABLE, Not available online / Call for pricing and availability
39	A3003050	BURNER BOX BTM-VGSU101 (WELDED)	1	EA	NO LONGER AVAILABLE, Not available online / Call for pricing and availability
40	PG230030	Orifice #53 (Nat.) Front / Rear Center - Left Rear	1	EA	
Not Shown	PB040082	ORIFICE HOOD #60 9701B1660	1	EA	
41	PB020073	Manifold Tubing (Short)	1	EA	
42	PB020074	Manifold Tubing (Long)	1	EA	
43	A2003052	Burner Gas Line Support Bracket	1	EA	
44	PG230029	Orifice #52 (Nat.) - Left Front	1	EA	
45	PB050040	Air Mixer	1	EA	
46	PB040119	Orifice Adapter	1	EA	
47	PB050031	BURNER VENTURI(90DEG) 01-036-297-02	1	EA	NO LONGER AVAILABLE
48	PB050030	BURNER VENTURI(90DEG) 01-036-298-02	1	EA	
49	PB050029	Burner Venturi, Front / Rear Center - Left Rear	1	EA	
50	PB050028	Burner Venturi, Left Front	1	EA	
51	B2102871	COOKTOP SURFACE 30"	1	EA	
Not Shown	E9102871BK	COOKTOP SURFACE *BK* 30"	1	EA	NO LONGER AVAILABLE
Not Shown	E9102871WH	COOKTOP SURFACE *WH* 30"	1	EA	NO LONGER AVAILABLE, Not available online / Call for pricing and availability





Item	Part No.	Name	Qty	Uom	NOTES
52	PA060034	Center Grate - Black	1	EA	
Not Shown	PA060035	Center Grate - Grey	1	EA	
NI	PE070179	Supply Cord	1	EA	
NI	PB040121	LP CONV. KIT (W/O REG)	1	EA	



Appendix A:Pages Index

VGSU 101 ..... 1



Appendix B:Parts Index

027447-000	1, 1	PB050030	1
A2003051	1	PB050031	1
A2003052	1	PB050032	1
A2003053	1	PB050033	1
A2003054	1	PB050034	1
A3003050	1	PB050035	1
B2102871	1	PB050040	1
E9102871BK	1	PB070034	1
E9102871WH	1	PB070058	1
G5003075BK	1	PB070059	1
PA010060	1	PB070060	1
PA010061	1	PB070061	1
PA020041	1	PB070062	1
PA050033	1	PB070063	1
PA050051	1	PD010027	1
PA060032	1	PD010029	1
PA060033	1	PD020006	1
PA060034	1	PD030029	1
PA060035	1	PD030037	1
PA070004	1	PD030038	1
PA070005	1	PD030039	1
PA080088	1	PD030042	1
PA080089	1	PE040067	1
PA080090	1	PE040068	1
PA080091	1	PE070179	1
PA080092	1	PG230029	1
PA080093	1	PG230030	1
PA080094	1	PG230031	1
PA080095	1	PG230032	1
PB010152	1	PG230036	1, 1
PB010153	1		
PB010154	1		
PB010155	1		
PB020073	1		
PB020074	1		
PB040082	1		
PB040119	1		
PB040121	1		
PB050028	1		
PB050029	1		