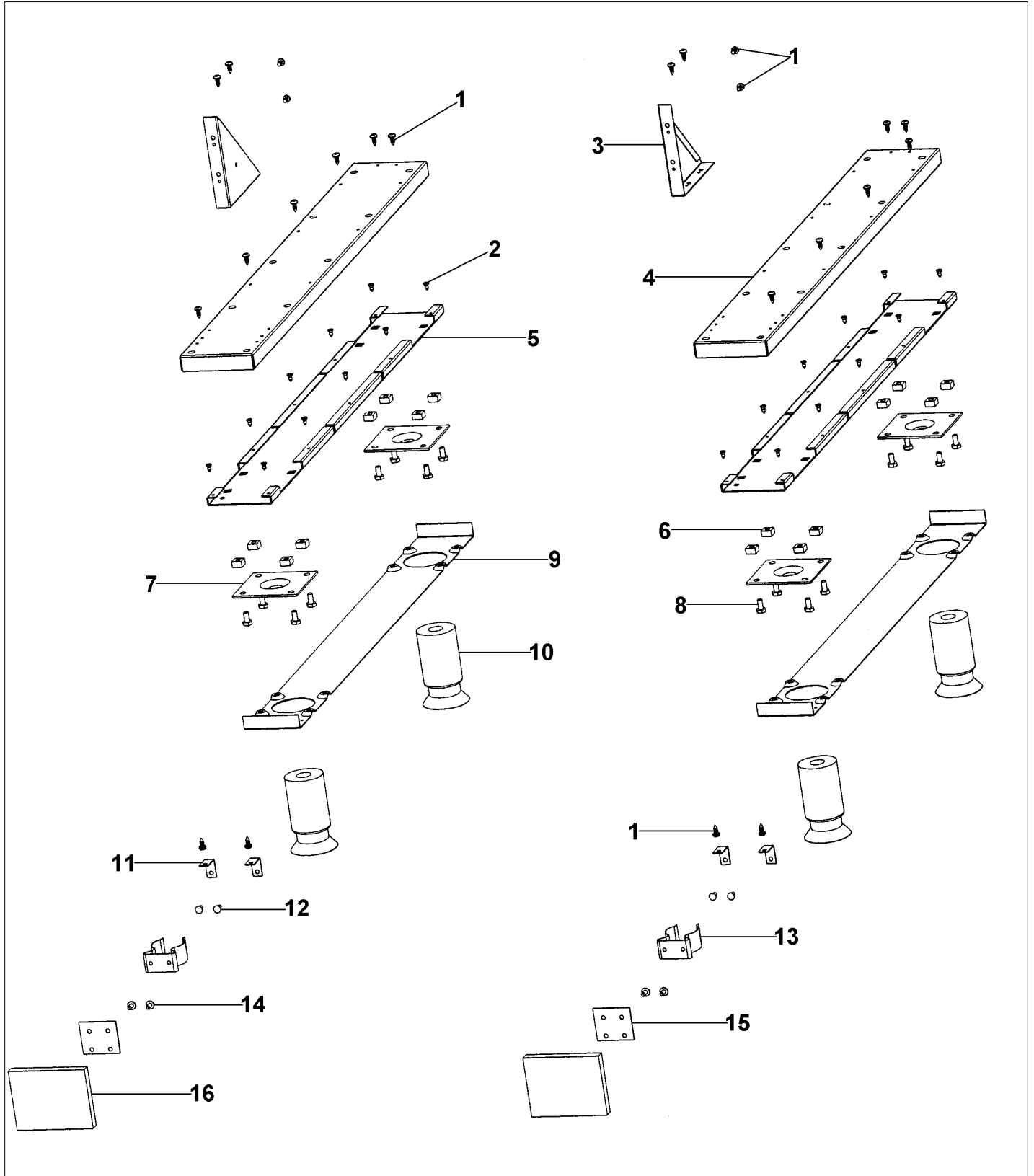


VERO3200

| | |
|------------------------------|---|
| LOWER UNIT AREA | 1 |
| MAIN CABINET AREA | 2 |
| Appendix A:Pages Index | A |
| Appendix B:Parts Index | B |

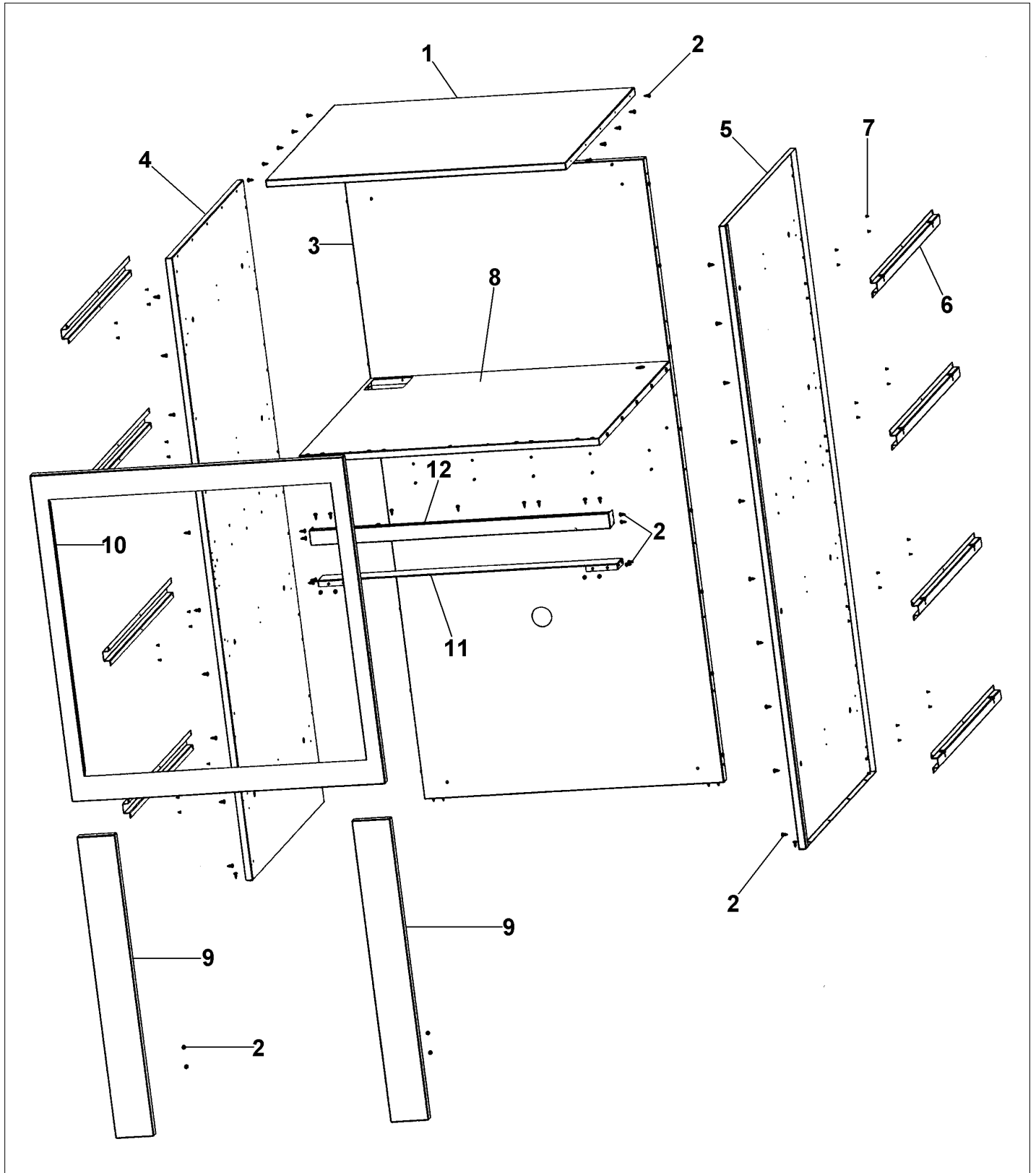
LOWER UNIT AREA





| Item | Part No. | Name | Qty | Uom | NOTES |
|------|-----------|--|-----|-----|---|
| 1 | PD020055 | ' #10 X 1/2" PAN PHIL. TEK.*SS* | 1 | EA | |
| 2 | PD020230 | #8 X 3/8 S. S. P.H. FLAT U/C S.M.S. | 1 | EA | NO LONGER AVAILABLE, Not available online / Call for pricing and availability |
| 3 | B20014638 | TOP CORNER BRACE | 1 | EA | NO LONGER AVAILABLE, Not available online / Call for pricing and availability |
| 4 | B20014618 | MAIN BOTTOM (68" REF) CABINET | 1 | EA | NO LONGER AVAILABLE, Not available online / Call for pricing and availability |
| 5 | A20014820 | LEG BRACE 30" CABINET | 1 | EA | NO LONGER AVAILABLE, Not available online / Call for pricing and availability |
| 6 | PD030043 | 1/4-20 CAGE NUT SS | 1 | EA | |
| 7 | PC030007 | LEG PLATE - 3/4" THREADED HOLE | 1 | EA | |
| 8 | PD010006 | HEX HD. BOLT - 1/4-20 X 1/2 | 1 | EA | |
| 9 | B20014619 | BOTTOM COVER (68" REF) CABINET | 1 | EA | NO LONGER AVAILABLE, Not available online / Call for pricing and availability |
| 10 | PC030017 | 4" LEG ASSY | 1 | EA | |
| 11 | A20014868 | KICK PLATE SUPPORT (REF) CABINET | 1 | EA | NO LONGER AVAILABLE, Not available online / Call for pricing and availability |
| 12 | PC040003 | POP RIVET - SB64 3/16"DIA.X 3/8" | 1 | EA | |
| 13 | PD030002 | LOWER ACC PAN SPRING CLAMP (SYWE1) | 1 | EA | |
| 14 | PD020002 | 10 X 1/2 PH.TR.HD.SMS. | 1 | EA | |
| 15 | A10014849 | 4" KICK PLATE MOUNT BRKT | 1 | EA | |
| 16 | PK030492 | 4" KICK PLATE 4.125" X 3.250" | 1 | EA | |

MAIN CABINET AREA





| Item | Part No. | Name | Qty | Uom | NOTES |
|------|-----------|---------------------------------|-----|-----|---|
| 1 | B20014825 | TOP (VERO3200) | 1 | EA | NO LONGER AVAILABLE, Not available online / Call for pricing and availability |
| 2 | PD020055 | ' #10 X 1/2" PAN PHIL. TEK.*SS* | 1 | EA | |
| 3 | B20014821 | REAR | 1 | EA | Not available online / Call for pricing and availability |
| 4 | B20014617 | LH I/S SIDE | 1 | EA | Not available online / Call for pricing and availability |
| 5 | B20014616 | RH I/S SIDE | 1 | EA | Not available online / Call for pricing and availability |
| 6 | A20013956 | MOUNT BRACKET (CABINETS) | 1 | EA | |
| 7 | PC040014 | POP RIVOT-SS42 *SS* | 1 | EA | |
| 8 | B20014828 | MIDDLE SUPPORT (VERO3200) | 1 | EA | NO LONGER AVAILABLE, Not available online / Call for pricing and availability |
| 9 | B30014829 | 4" SIDE FRONT FASCIA | 1 | EA | |
| 10 | B30014827 | FRONT FASCIA (VERO3200) | 1 | EA | NO LONGER AVAILABLE, Not available online / Call for pricing and availability |
| 11 | B20014830 | TOP SUPPORT (VERO3200) | 1 | EA | |
| 12 | B20014866 | CENTER SUPPORT | 1 | EA | Not available online / Call for pricing and availability |



Appendix A:Pages Index

| | |
|-------------------------|---|
| LOWER UNIT AREA | 1 |
| MAIN CABINET AREA | 2 |



Appendix B:Parts Index

| | |
|-----------|------|
| A10014849 | 1 |
| A20013956 | 2 |
| A20014820 | 1 |
| A20014868 | 1 |
| B20014616 | 2 |
| B20014617 | 2 |
| B20014618 | 1 |
| B20014619 | 1 |
| B20014638 | 1 |
| B20014821 | 2 |
| B20014825 | 2 |
| B20014828 | 2 |
| B20014830 | 2 |
| B20014866 | 2 |
| B30014827 | 2 |
| B30014829 | 2 |
| PC030007 | 1 |
| PC030017 | 1 |
| PC040003 | 1 |
| PC040014 | 2 |
| PD010006 | 1 |
| PD020002 | 1 |
| PD020055 | 1, 2 |
| PD020230 | 1 |
| PD030002 | 1 |
| PD030043 | 1 |
| PK030492 | 1 |