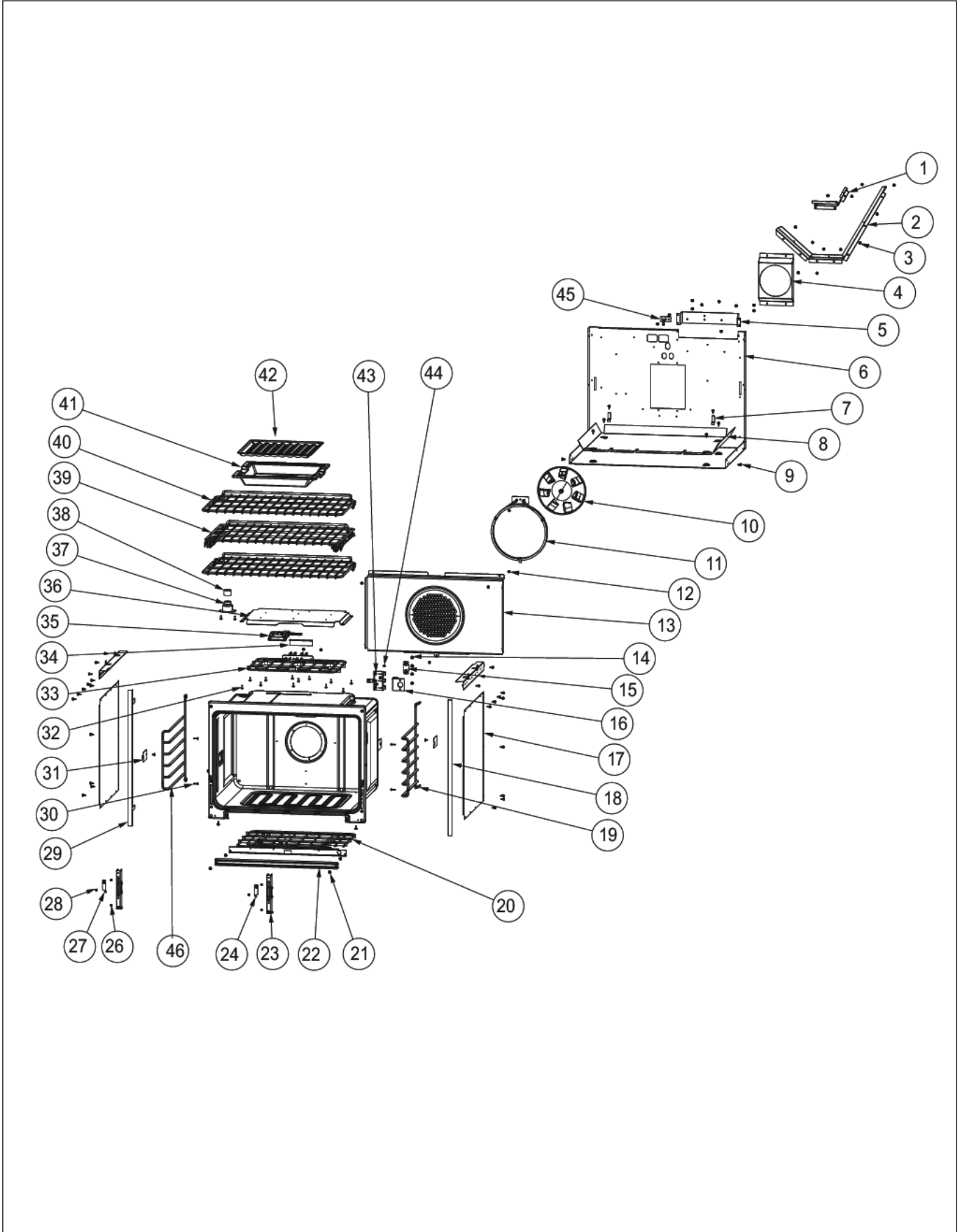


DSCD130-4B

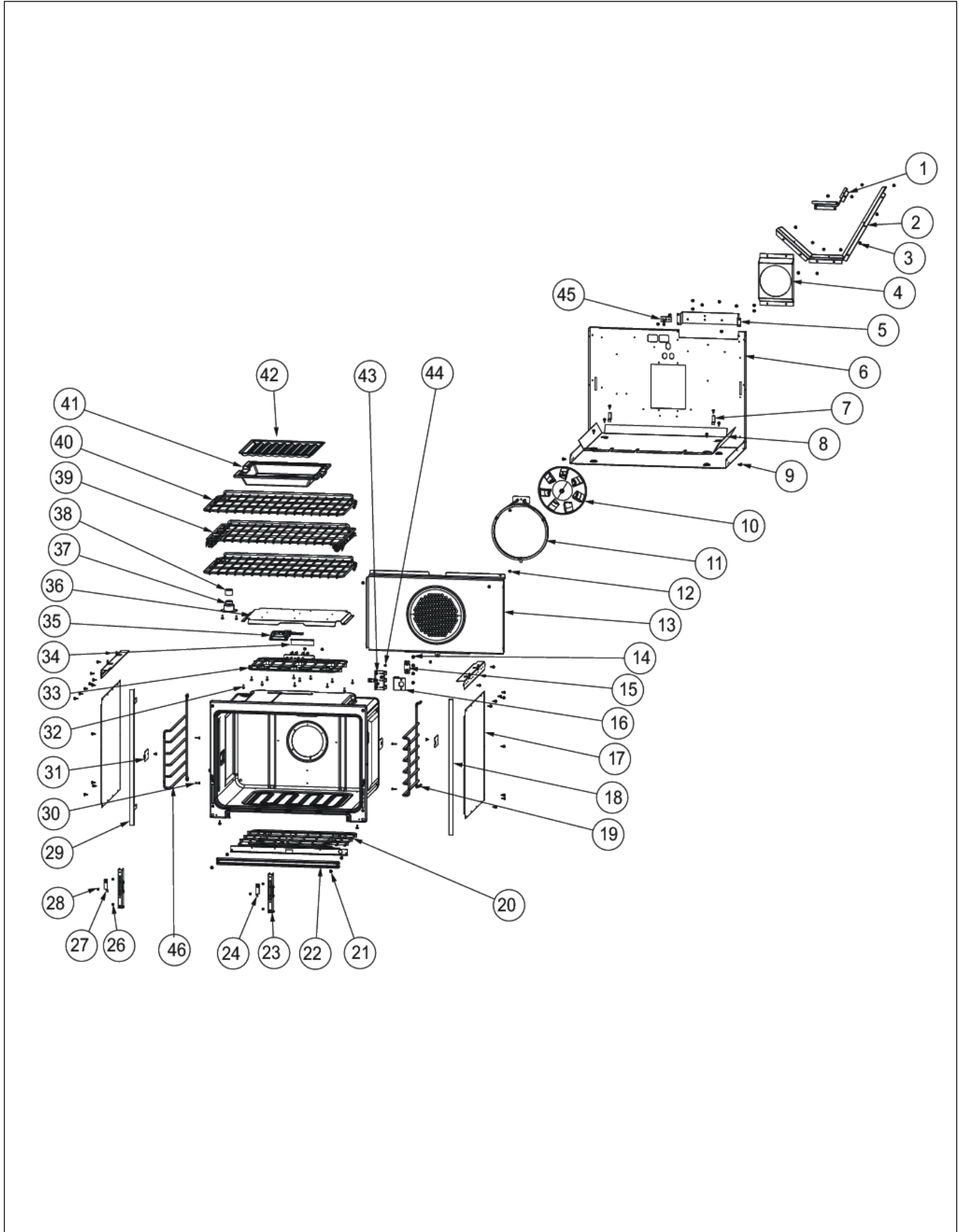
CAVITY INTERIOR	1
CONTROL AREA	2
DOOR ASSEMBLY	3
LOWER UNIT AND SIDE PANELS	4
OVEN ELECTRONICS	5
REAR SHEET METAL	6
SURFACE COOKING AREA	7
WIRING	8
Appendix A:Pages Index	A
Appendix B:Parts Index	B

CAVITY INTERIOR





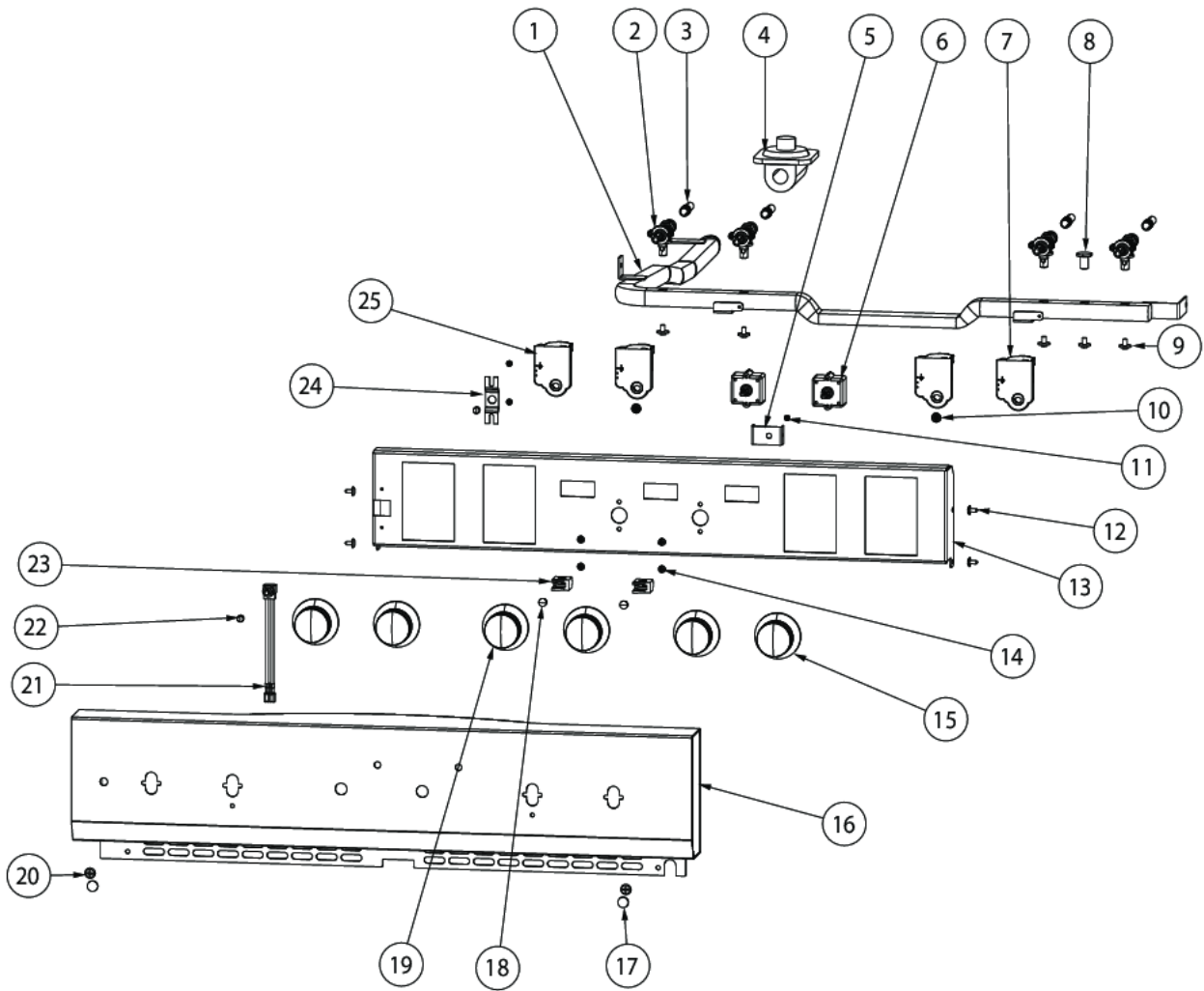
Item	Part No.	Name	Qty	Uom	NOTES
1	003356-000	DIVERTER, AIR	1	EA	
2	002941-000	BAFFLE, FAN, REAR	1	EA	
3	003860-000	10-18 x .500 FASTNR,SCR,HXWH,STL,ZPLT	55	EA	
4	A2009697	BRACKET, CONVECTION INSULATION	1	EA	
5	004110-000	Blower Mount	1	EA	
6	003244-000	OVEN BOTTOM, BACK WRAP	1	EA	Not available online / Call for pricing and availability
7	A2009696	HOLDER, BAKE ELEMENT	2	EA	
8	A2009612	ELEMENT, MTG TRAY	1	EA	
9	003801-000	SHOULDER SCREW, #10	2	EA	
10	015394-000	FAN, CNVN, ASM	1	EA	
11	PJ010047	CONVECTION ELEMENT	1	EA	
12	PD020048	NO.10 X 1/2 TEK 410 SS SCREW	25	EA	
13	014932-000	BAFFLE, CNVN, ASM, DSCD	1	EA	
14	PD020014	10X3/4 PH TR HD SMS	1	EA	
15	A1002457	POWER CORD MOUNTING STRAP (VDSC)	1	EA	
16	A2002195	POWER CORD MOUNTING BRKT (VDSC)	1	EA	
17	014137-000	WRAPPER, OVEN SIDE	2	EA	
18	003644-000	TRIM,FRONT,SIDE,STAINLESS	1	EA	
19	015362-000	SUPPORT, RACK, ASM, RH, BLUE	1	EA	Not available online / Call for pricing and availability
20	PJ010048	BAKE ELEMENT	1	EA	
21	PD020063	SCREW-#8(A) X 3/8"PH WFR HD/BK OXID	4	EA	
22	014934-000	COVER, BAKE TRAY	1	EA	Not available online / Call for pricing and availability
23	031679-000	RECEPTACLE, HINGE	1	EA	
24	B21010915	HINGE CLIP - RH	1	EA	





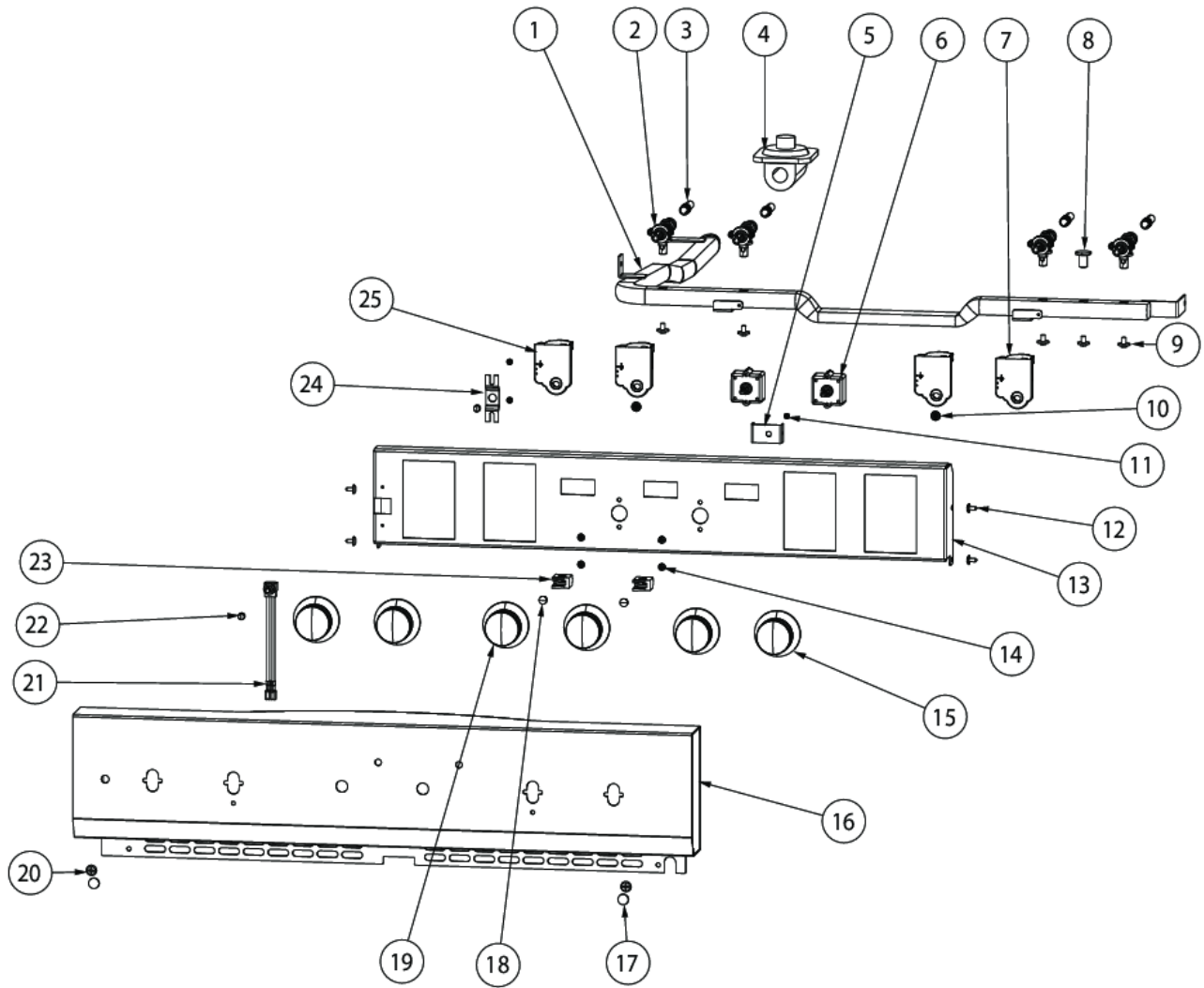
Item	Part No.	Name	Qty	Uom	NOTES
25	015362-000	SUPPORT, RACK, ASM, RH, BLUE	1	EA	Not available online / Call for pricing and availability
26	PD020062	#8-32 X 3/8 PHMS TYPE 1	4	EA	
27	B21010916	HINGE CLIP - LH	1	EA	
28	PD020061	' #8 X 3/4 FLAT HD TEK. *SS*	2	EA	
29	005038-000	TRIM,FR,SIDE,L	1	EA	
30	PD020232	#8 X 3/4" PH PAN HEAD TEK SCREW (BLACK OXIDE)	4	EA	
31	014752-000	COVER, LT, BLUE PORCELAIN	2	EA	
32	A2009641	BRKT, TOP WRAPPER	1	EA	
33	PJ010049	BROIL ELEMENT	1	EA	
34	A20014044	BROIL ELEMENT SHIELD	1	EA	
35	020403-000	LAMP, OVEN, 120V/40W	1	EA	
36	A20014021	REFLECTOR, BROIL	1	EA	
37	PM010014	SMOKE ELIMINATOR (VDSC)	1	EA	
38	PB020275	VENT TUBE	1	EA	
39	024102-000	PULLOUT RACK, 30"	1	EA	
40	PB060107	30" OVEN RACK	2	EA	
41	014923-000	PAN, BROILER, BLUE PORCELAIN	1	EA	
42	014924-000	INSERT, BROILER PAN, BLUE PORCELAIN	1	EA	Not available online / Call for pricing and availability
43	PE070147	TERMINAL BLOCK (VDSC)	1	EA	
44	PD020010	10 X 3/8 GREEN GROUNDING SCREW	1	EA	
45	PE050206	RTD THERMOSTAT PROBE	1	EA	
46	015361-000	SUPPORT, RACK, ASM, LH, BLUE	1	EA	

CONTROL AREA





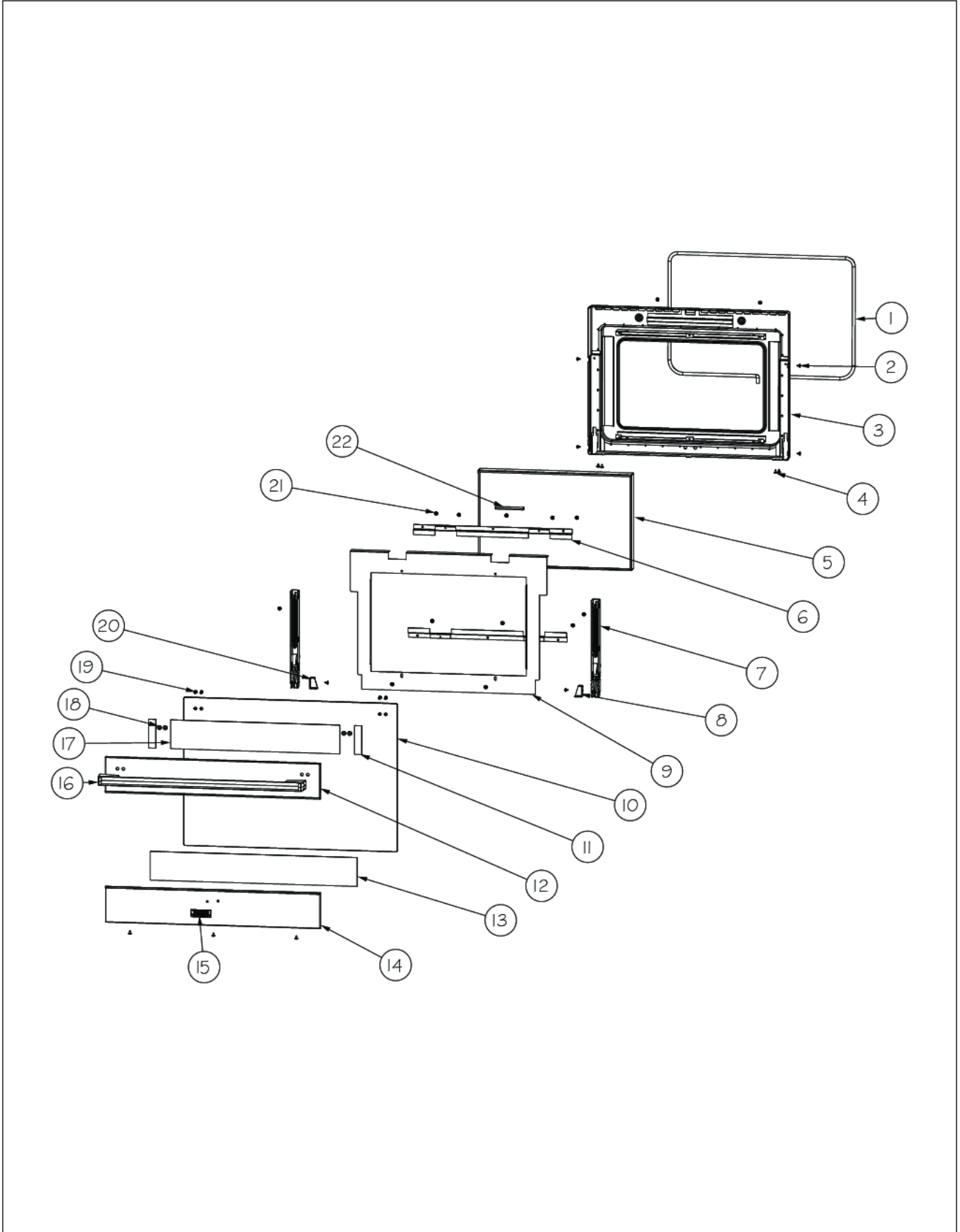
Item	Part No.	Name	Qty	Uom	NOTES
1	002926-000	GAS MANIFOLD, REDESIGN	1	EA	
2	003515-000	PA010157 VALVE AND BOLT KIT	4	EA	
3	PB020190	10" FLEX TUBE	4	EA	
4	PA070003	PRESSURE REGULATOR (NAT.)	1	EA	
4	013386-000	LP PRESSURE REGULATOR	1	EA	
5	A2001361	BACK SPACER (VGSC/VGSS)	1	EA	
6	PJ030035	THERMOSTAT	1	EA	
<p>Comments for Part Num. PJ030035</p> <p>parts@lvdistributes.com on Feb 7, 2018 this is not the correct part for this range it should be a 003225-000 Reply by JREXEC02@AOL.COM on Feb 27, 2018 003225-000 is an Induction Control.</p> <p>PJ030035 is the red colored thermostat for the Gas Range *****</p>					
7	PA020058	IRIS SINGLE SPARK MODULE	1	EA	
8	002884-000	MANIFOLD PLUG	1	EA	
9	PD010012	VALVE BOLT 1/4-20 UNC-2B 5/16" M.S.	5	EA	
10	PD020046	#8 X 1/2 SCREWS	2	EA	
11	PD020006	' #6-32 X 1/4" PH.PAN HD. T(F)	3	EA	
12	PD020032	SRW-8(A)X3/8"PH.WFR HD 7/16DIA*NICL	3	EA	
13	014551-000	CONTROL PANEL MOUNTING	1	EA	
14	PD020269	#8 PAN HEAD SCREW	4	EA	
15	PA010163	DGRT KNOB-CHROME W/BLACK SLEEVE	4	EA	
16	052525-2212	LANDING LEDGE ASM, DSCD130 W/ GRAPHICS	1	EA	Not available online / Call for pricing and availability
17	PD040004	GROMMET BUMPER	2	EA	
18	015174-000	LENS, BLUE	2	EA	
Not Shown	NOTE	(BEFORE 3/3/10)		EA	
NI	015043-000	INDICATOR, LIGHT, BLUE LED	2	EA	





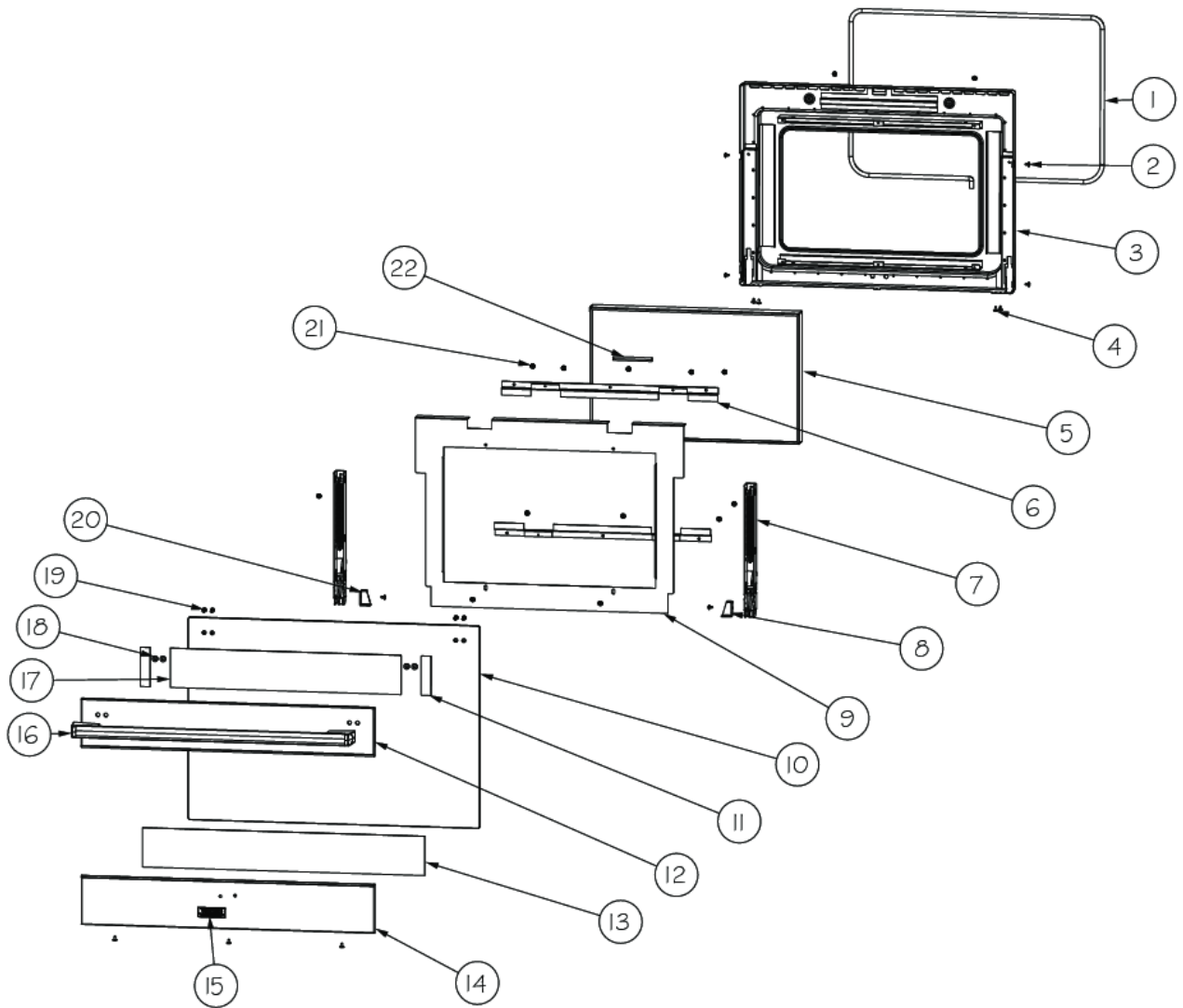
Item	Part No.	Name	Qty	Uom	NOTES
Not Shown	NOTE	(ON OR AFTER 3/3/10)		EA	
19	PA010226	SELECTOR KNOB W/BLACK SLEEVE	2	EA	
20	PD020033	SRW-#10-24X1/2"T(23)PH.WFR HD (NKL)	2	EA	
21	G40015469	LIGHT SWITCH ASSEMBLY	1	EA	
22	PA010093	DESIGNER OVEN LT SWITCH KNOB	2	EA	
23	015170-000	HOUSING, LIGHT, BLUE NEON, 125V	2	EA	
Not Shown	NOTE	(BEFORE 3/3/10)		EA	
NI	015043-000	INDICATOR, LIGHT, BLUE LED	2	EA	
Not Shown	NOTE	(ON OR AFTER 3/3/10)		EA	
24	015105-000	BRACKET, SW	1	EA	
25	PA020058	IRIS SINGLE SPARK MODULE	3	EA	
NI	PJ030033	SELECTOR (10 POS)	1	EA	

DOOR ASSEMBLY

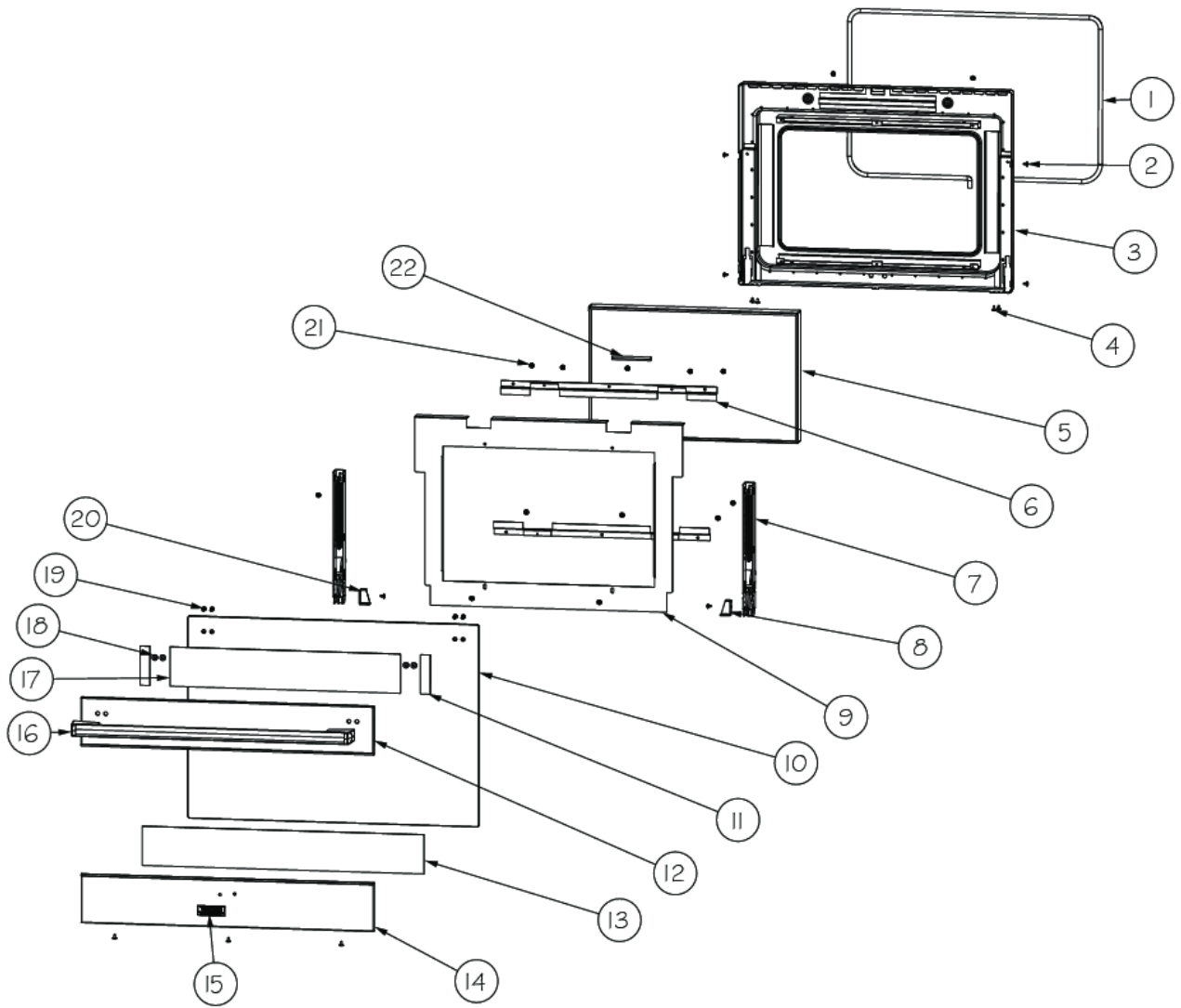




Item	Part No.	Name	Qty	Uom	NOTES
1	PB070246	30" DOOR GASKET	1	EA	
2	PD020063	SCREW-#8(A) X 3/8"PH WFR HD/BK OXID	12	EA	
3	015413-000	LINER, DOOR ASM, BLUE	1	EA	
4	PD020032	SRW-8(A)X3/8"PH.WFR HD 7/16DIA*NICL	5	EA	
5	PE060094	30 WINDOW PACK	1	EA	
6	004153-000	DOOR GLASS HOLDER BRACKET	2	EA	
7	002740-000	DOOR HINGE	2	EA	See TC-0121-SP Service Bulletin
8	006807-000	HINGE, BRACKET, RH	1	EA	
9	004152-000	DOOR LINER INSULATION RETAINER, 30	1	EA	
10	013676-000	GLASS, DOOR SKIN, DESIGNER RANGE	1	EA	
11	019289-000	TAPE, ADHESIVE, UPPER DOOR, SIDE	2	EA	Not available online / Call for pricing and availability
12	019259-000	TRIM, DOOR, UPPER, 30" RANGE, SS	1	EA	
13	014194-000	3M VHB TAPE, 4991	1	EA	
14	013678-000	DOOR SKIN, BOTTOM, DESIGNER RANGE	1	EA	
15	013700-000	2.75" DESIGNER LOGO WITH PINS	1	EA	
16	009602-000	HANDLE, ASM	1	EA	
17	014195-000	3M VHB TAPE, 4991, UPPER DOOR	1	EA	
18	046838-000	BUSHING, NYLON (12SWS0953)	4	EA	Not available online / Call for pricing and availability
19	008974-000	SCREW 10 - 32 X 3/4 SLOT HEX WASHER W/ LOCTITE	4	EA	
20	006808-000	HINGE, BRACKET, LH	1	EA	
21	PD020002	10 X 1/2 PH.TR.HD.SMS.	10	EA	
22	000594-000	BLACK FIBERGLASS ROPE 3/8	1	EA	
NI	015579-000	OUTER DOOR ASM, DSCD130, SS	1	EA	



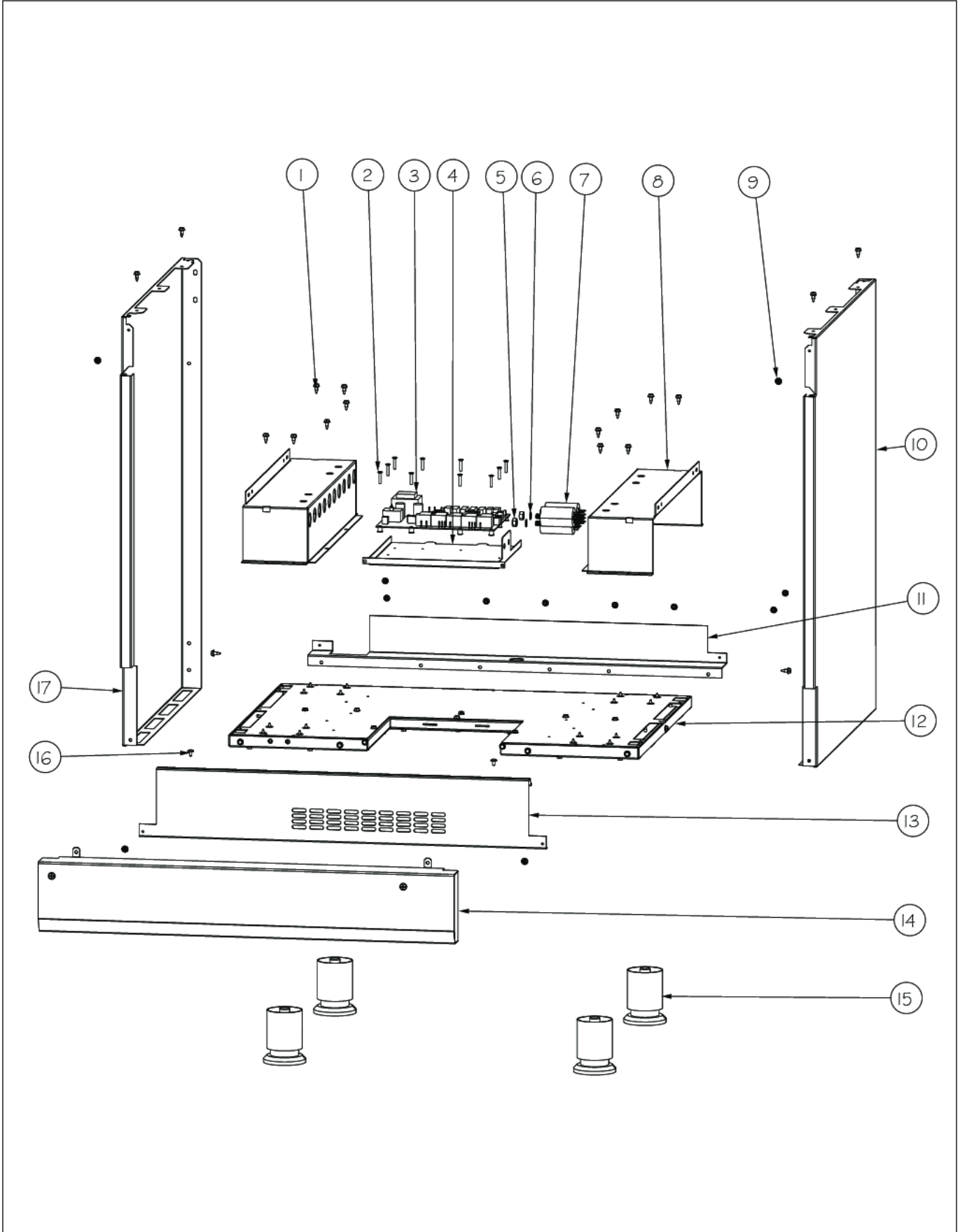
Item	Part No.	Name	Qty	Uom	NOTES
NI	019046-002	SKIN, DOOR, ASM, 30 DES BK	1	EA	
NI	019046-003	SKIN, DOOR, ASM, 30 DES BT	1	EA	
NI	019046-004	SKIN, DOOR, ASM, 30 DES SG	1	EA	
NI	019046-005	SKIN, DOOR, ASM, 30 DES GG	1	EA	
NI	019046-006	SKIN, DOOR, ASM, 30 DES WH	1	EA	
NI	019046-008	SKIN, DOOR, ASM, 30 DES BU	1	EA	Not available online / Call for pricing and availability
NI	019046-009	SKIN, DOOR, ASM, 30 DES LE	1	EA	
NI	019046-010	SKIN, DOOR, ASM, 30 DES MJ	1	EA	
NI	019046-012	SKIN, DOOR, ASM, 30 DES VB	1	EA	
NI	019046-013	SKIN, DOOR, ASM, 30 DES CB	1	EA	Not available online / Call for pricing and availability
NI	019046-015	SKIN, DOOR, ASM, 30 DES PL	1	EA	
NI	019046-016	SKIN, DOOR, ASM, 30 DES CH	1	EA	
NI	019046-017	SKIN, DOOR, ASM, 30 DES TP	1	EA	
NI	019046-018	SKIN, DOOR, ASM, 30 DES CW NLA	1	EA	
NI	019046-019	SKIN, DOOR, ASM, 30 DES OG	1	EA	
NI	019046-020	SKIN, DOOR, ASM, 30 DES GM	1	EA	
NI	019046-021	SKIN, DOOR, ASM, 30 DES SA	1	EA	
NI	019046-022	SKIN, DOOR, ASM, 30 DES SE	1	EA	
NI	019046-023	SKIN, DOOR, ASM, 30 DES IB	1	EA	
NI	019046-024	SKIN, DOOR, ASM, 30 DES AR	1	EA	
NI	019046-025	SKIN, DOOR, ASM, 30 DES RR	1	EA	
NI	019046-026	SKIN, DOOR, ASM, 30 DES PM	1	EA	
NI	019046-027	SKIN, DOOR, ASM, 30 DES MS	1	EA	
NI	015581-000	DOOR ASM, DSCD130, SS	1	EA	
NI	019048-002	DOOR, ASM, 30 DES BK	1	EA	
NI	019048-003	DOOR, ASM, 30 DES BT	1	EA	
NI	019048-004	DOOR, ASM, 30 DES SG	1	EA	
NI	019048-005	DOOR, ASM, 30 DES GG	1	EA	
NI	019048-006	DOOR, ASM, 30 DES WH	1	EA	





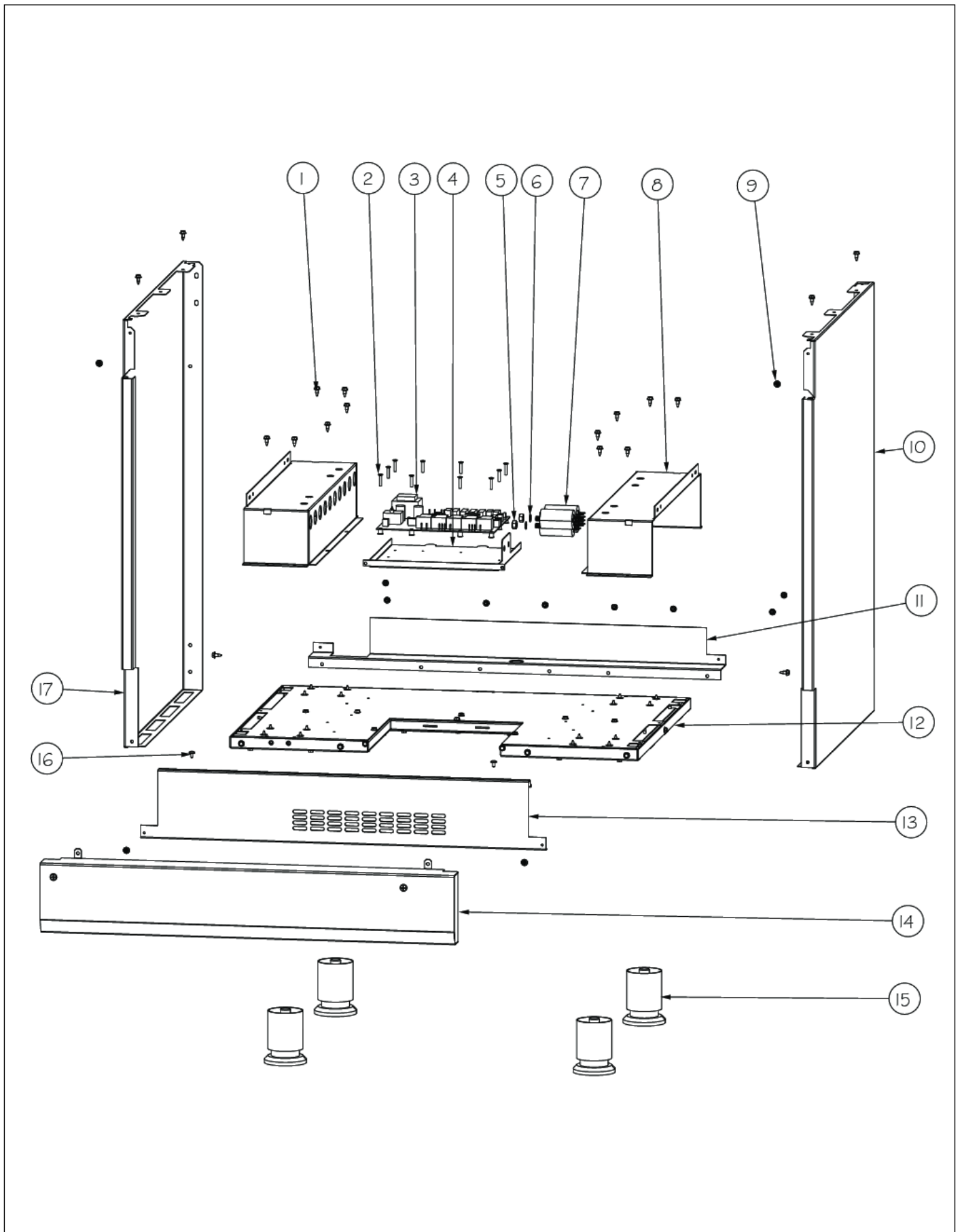
Item	Part No.	Name	Qty	Uom	NOTES
NI	019048-008	DOOR, ASM, 30 DES BU	1	EA	
NI	019048-009	DOOR, ASM, 30 DES LE	1	EA	
NI	019048-010	DOOR, ASM, 30 DES MJ	1	EA	
NI	019048-012	DOOR, ASM, 30 DES VB	1	EA	
NI	019048-013	DOOR, ASM, 30 DES CB	1	EA	
NI	019048-015	DOOR, ASM, 30 DES PL	1	EA	
NI	019048-016	DOOR, ASM, 30 DES CH	1	EA	
NI	019048-017	DOOR, ASM, 30 DES TP	1	EA	
NI	019048-018	DOOR, ASM, 30 DES CW NLA	1	EA	
NI	019048-019	DOOR, ASM, 30 DES OG	1	EA	
NI	019048-020	DOOR, ASM, 30 DES GM	1	EA	
NI	019048-021	DOOR, ASM, 30 DES SA	1	EA	
NI	019048-022	DOOR, ASM, 30 DES SE	1	EA	
NI	019048-023	DOOR, ASM, 30 DES IB	1	EA	
NI	019048-024	DOOR, ASM, 30 DES AR	1	EA	
NI	019048-025	DOOR, ASM, 30 DES RR	1	EA	
NI	019048-026	DOOR, ASM, 30 DES PM	1	EA	
NI	019048-027	DOOR, ASM, 30 DES MS	1	EA	

LOWER UNIT AND SIDE PANELS





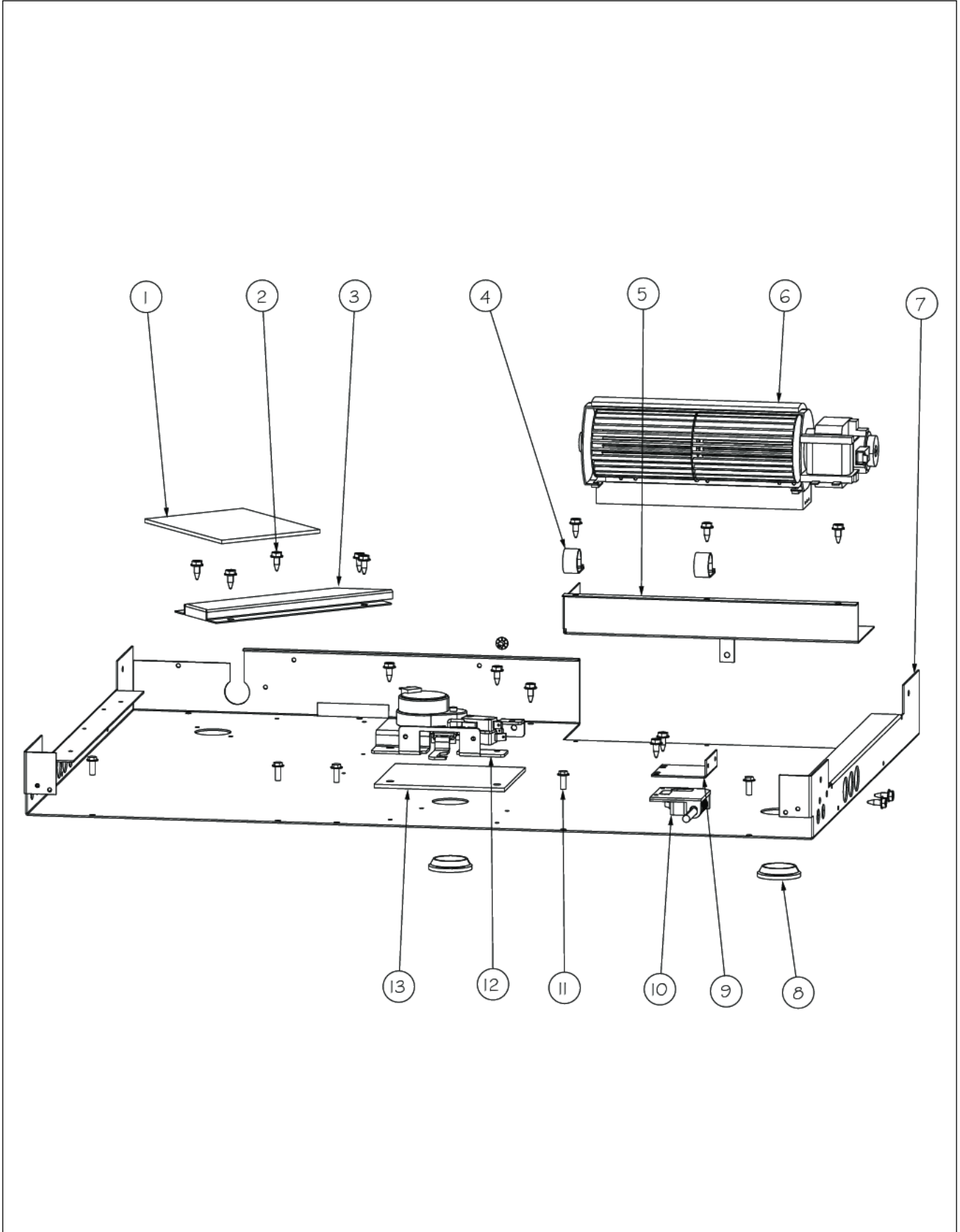
Item	Part No.	Name	Qty	Uom	NOTES
1	003860-000	10-18 x .500 FASTNR,SCR,HXWH,STL,ZPLT	26	EA	
2	PD020043	#6-32 X .750 PH. CTRSK T(F)- VGSO166	10	EA	
3	002406-000	CONTROL BOARD	1	EA	
Comments for Part Num. 002406-000					
haarnink@vikingrange.com on Jun 18, 2015					
For the international E Model numbers EVDSC5 we need to add the info that sins First unit was EVDSC530S4B: 092314C10147281 any EVDSC built in 2014 went into production with EOC4. so here we need to add the part number 014000-000 EOC4 plus the SMPS part number 013999-000					
Not Shown	NOTE	(BEFORE 3/3/10)		EA	
3	046142-556	CONTROL, EOC4, LED, V39/V51 & FAMILY	1	EA	
Not Shown	NOTE	(ON OR AFTER 3/3/10)		EA	
NI	015201-000	LINEAR POWER SUPPLY	1	EA	
Not Shown	NOTE	(ON OR AFTER 3/3/10)		EA	
Not Shown	NOTE	(BEFORE 3/3/10)		EA	
4	015096-000	PLATE, MTG, EOC4 CONTROL BOARD	1	EA	
Not Shown	NOTE	(ON OR AFTER 3/3/10)		EA	
5	PD030172	M8 X 1.25MM NUT	2	EA	
6	PD040164	5/16 INTERNAL TOOTH LOCK WASHER TYPE A	2	EA	
7	036047-000	CAPACITOR, CONV MOTOR, INTL	2	EA	
8	014241-000	SUPPORT, OVEN	2	EA	
9	003801-000	SHOULDER SCREW, #10	4	EA	
10	014764-000	PANEL, SIDE, DESIGNER, RH, SS	1	EA	
11	014240-000	LEDGE, BACK	1	EA	
12	003051-000	BASE LOWER PLATE	1	EA	
13	014246-000	GRILL, LOWER	1	EA	
14	036268-000	KICKPLATE, 30" DSCD/DSCE DESIGNER SS	1	EA	





Item	Part No.	Name	Qty	Uom	NOTES
15	044178-000	RANGE, LEG, ADJUSTABLE	4	EA	
16	PD020032	SRW-8(A)X3/8"PH.WFR HD 7/16DIA*NICL	1	EA	
17	014765-000	PANEL, SIDE, DESIGNER, LH, SS	1	EA	

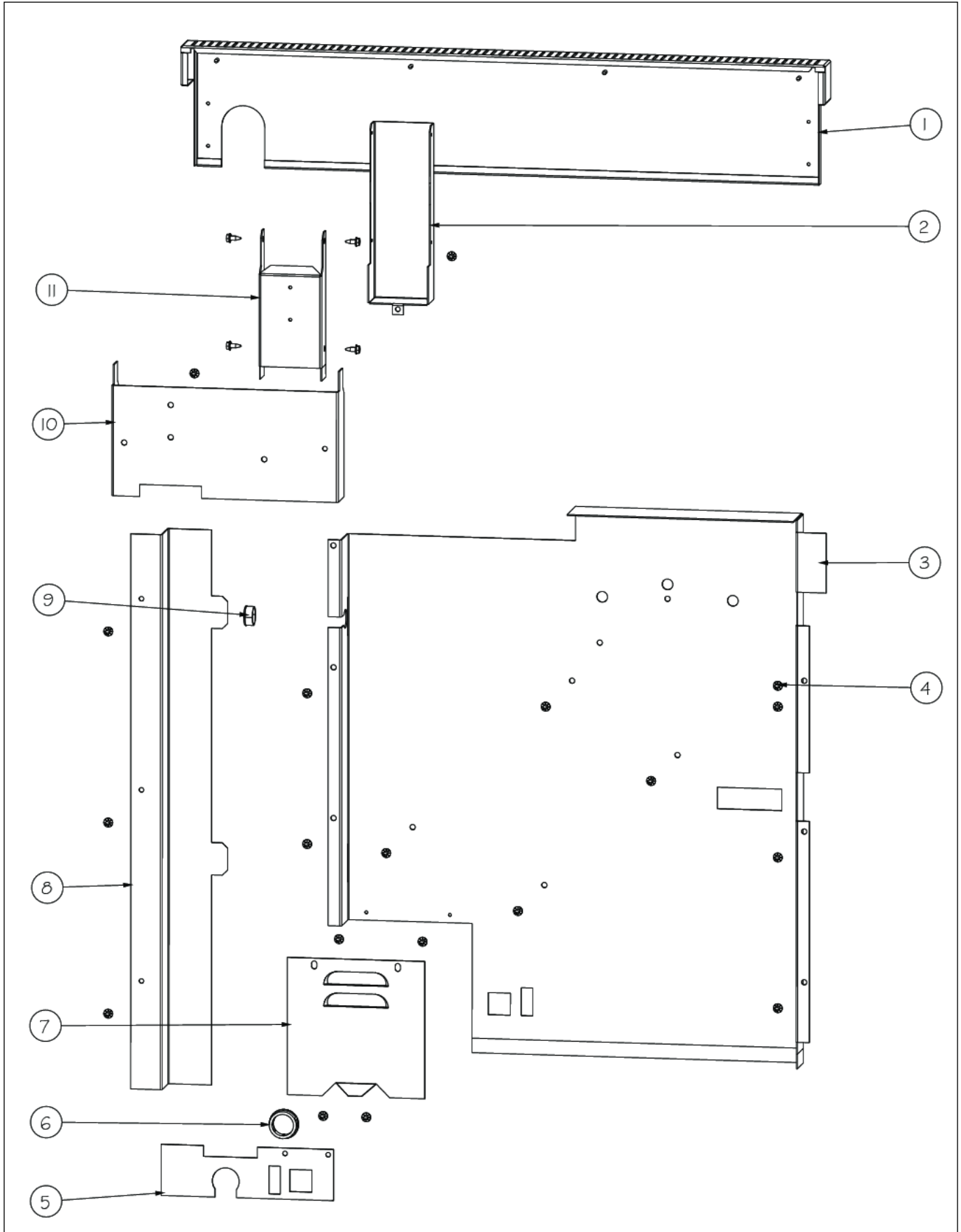
OVEN ELECTRONICS





Item	Part No.	Name	Qty	Uom	NOTES
1	004285-000	INSULATION, FOIL-BACKED,4"x5"	1	EA	
2	003860-000	10-18 x .500 FASTNR,SCR,HXWH,STL,ZPLT	16	EA	
3	003333-000	DUCT, FLUE	1	EA	
4	PD030109	INSULATED CLAMP	2	EA	
5	A2009659	Blower Bracket	1	EA	
6	PE050250	Blower	1	EA	
<p>Comments for Part Num. PE050250</p> <p>highendappsvc@gmail.com on Jan 28, 2019</p> <p>If you need to replace cooling fan for the model vgsc5486gss serial date code 031412, do not order this fan, this fan is larger and configured wrong. The correct fan is 007794-000. it is smaller.</p>					
7	015615-000	BRACE, RNG, AIR CHANNEL	1	EA	
8	PB070079	SILICONE EXTRUSION (DGSU)	2	EA	
9	A20012649	DOOR SWITCH BRACKET	1	EA	
10	PE050208	DOOR SWITCH	1	EA	
11	PD020048	NO.10 X 1/2 TEK 410 SS SCREW	5	EA	
12	013250-000	LATCH,DOOR,ASM,240V,GRID DLE LOCKOUT	1	EA	
13	013564-000	LOWER LATCH INSULATION	1	EA	

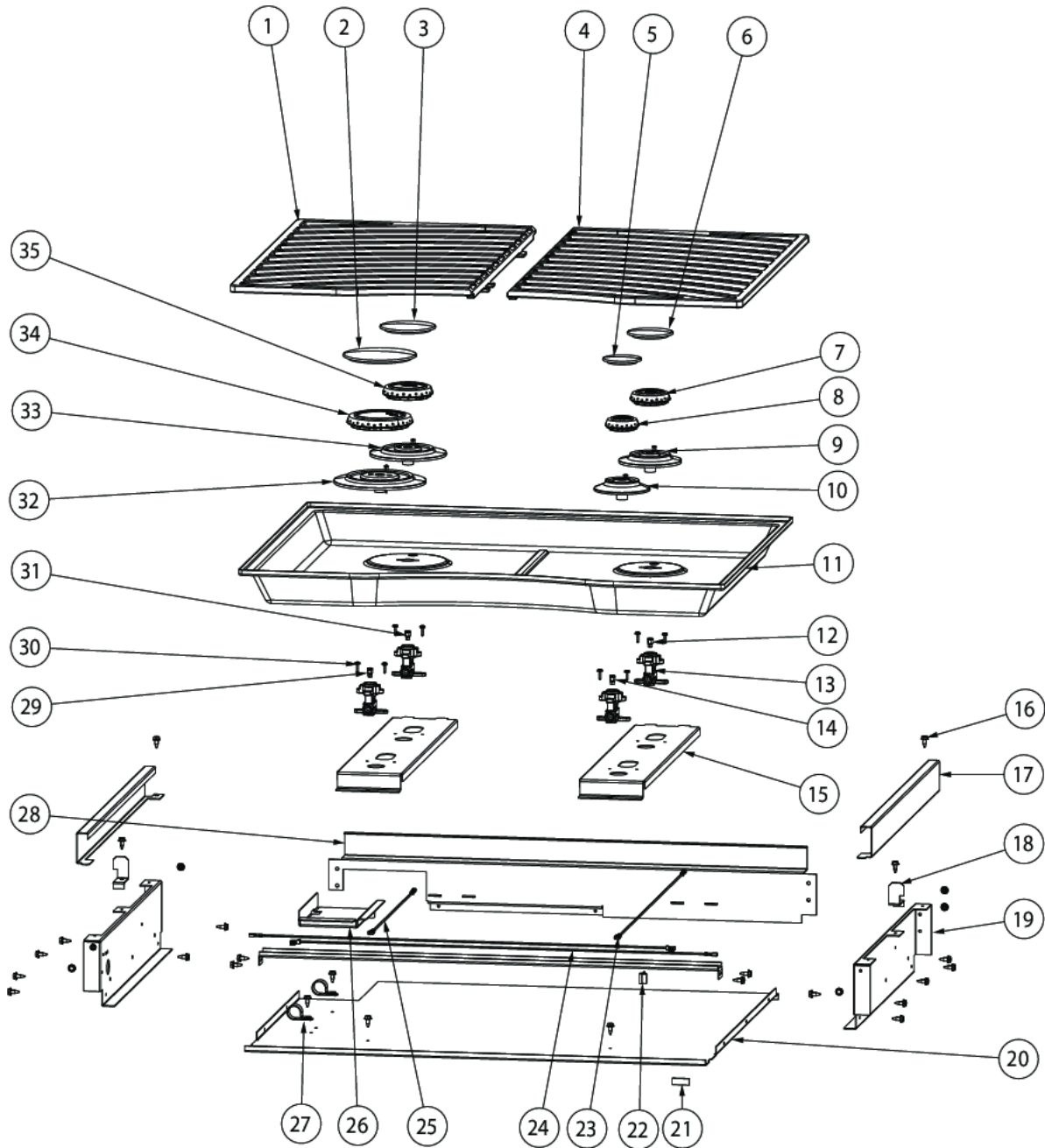
REAR SHEET METAL



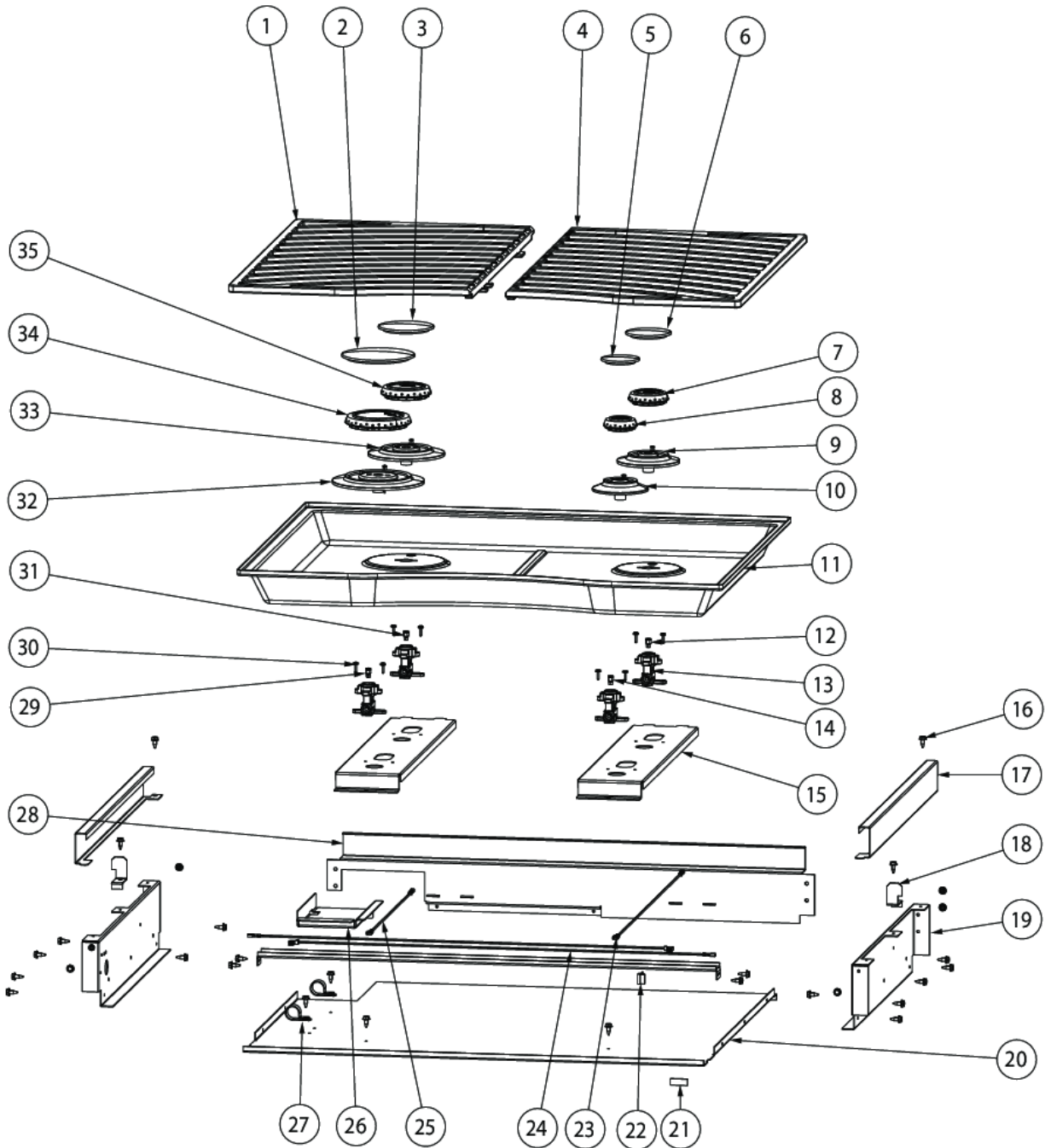


Item	Part No.	Name	Qty	Uom	NOTES
1	015931-000	ISLAND TRIM ASM, 30" DESIGNER	1	EA	
2	A20010101	FLUE, OUTSIDE SHELL	1	EA	
3	003272-000	COVER, BACK- INTERNATIONAL	1	EA	
4	003860-000	10-18 x .500 FASTNR,SCR,HXWH,STL,ZPLT	23	EA	
5	003702-000	PLATE,MOUNTING,TEST CONNECTOR	1	EA	Not available online / Call for pricing and availability
6	PD040152	SNAP BUSHING	1	EA	
7	A2002454	BACK, COVER ACCESS DOOR	1	EA	
8	015607-000	CHANNEL, WIRE, DSCD	1	EA	
9	PD040005	SNAP BUSHING - 7/8"	1	EA	
10	014553-000	DUCT, AIR	1	EA	
11	014554-000	BOX, FLUE, FRONT	1	EA	

SURFACE COOKING AREA



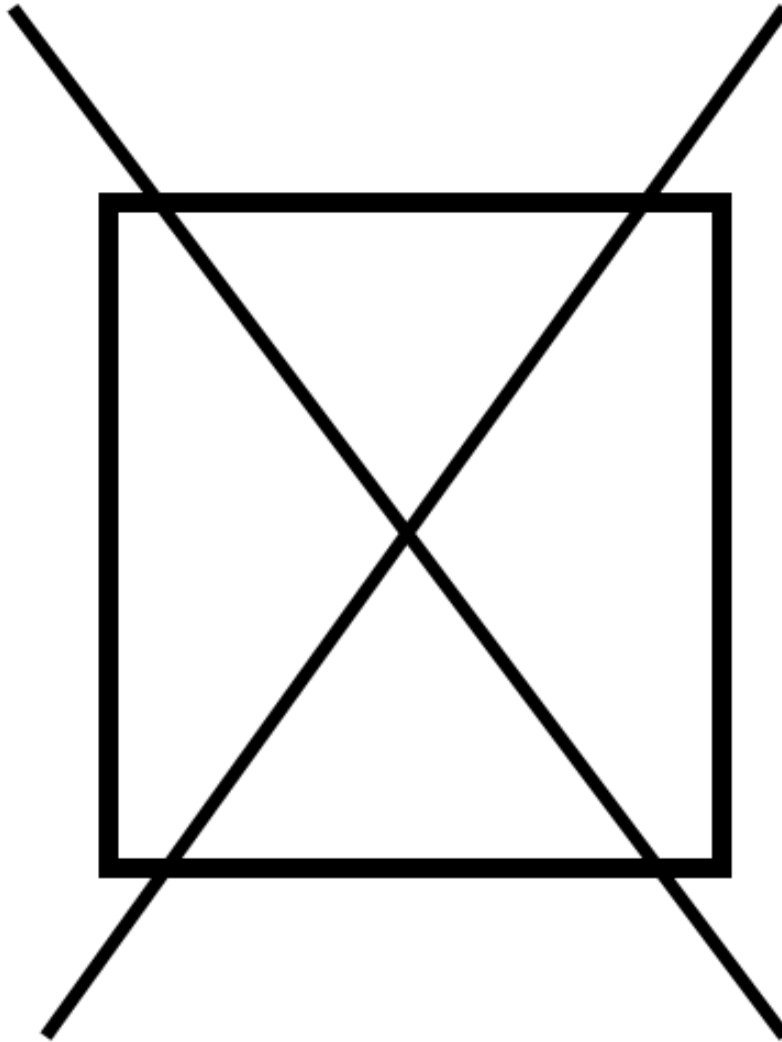
Item	Part No.	Name	Qty	Uom	NOTES
1	016476-000	LEFT GRATE, 30" DESIGNER RANGE	1	EA	
2	PA080083	D BURNER CAP *MATTE BLACK*	1	EA	
3	PA080107	DGRT-C BURNER CAP- BLACK	1	EA	
4	016477-000	RIGHT GRATE, 30" DESIGNER RANGE	1	EA	
5	PA080103	DGRT-A BURNER CAP- BLACK	1	EA	
6	PA080105	DGRT-B BURNER CAP- BLACK	1	EA	
7	PA080100	DGRT-B COMPLETE BURNER HEAD ASSEMBLY	1	EA	
8	PA080099	DGRT-ACOMPLETE BURNER HEAD ASSEMBLY	1	EA	
9	PB050071	B-BASE	1	EA	
10	PB050072	A-BASE	1	EA	
11	B21011410	BURNER PAN - SS, DGRT300	1	EA	
12	PB040199	ORIFICE NO.56	1	EA	
12	PB040204	#67 LP	1	EA	
13	PB050067	JETHOLDER	4	EA	
14	PB040200	#57 ORIFICE - LP	1	EA	
14	PB040275	NO.70 ORIFICE - LP	1	EA	
15	014202-000	SUPPORT, ORIFICE HOLDER	2	EA	
16	003860-000	10-18 x .500 FASTNR,SCR,HXWH,STL,ZPLT	29	EA	
17	014892-000	TRIM, SST,#3,SIDE TRIM,DESIGNER RNG,RH	2	EA	Not available online / Call for pricing and availability
18	015106-000	SIDE TRIM SUPPORT	2	EA	
19	013663-000	BURNER BOX, SIDE, RT	2	EA	
20	015052-000	PANEL, BNR BOX BOTTOM	1	EA	
21	PB070058	Cooktop Gasket	1	EA	
22	PE070889	IRIS HARNESS (24"/30")	1	EA	
23	006766-000	IRIS IGNITOR WIRE, BACK BURNER	1	EA	
24	006766-000	IRIS IGNITOR WIRE, BACK BURNER	2	EA	
25	000647-000	IRIS IGNITOR WIRE, FRONT BURNER	1	EA	





Item	Part No.	Name	Qty	Uom	NOTES
26	014199-000	COVER, REGULATOR BASE	1	EA	
27	PD030109	INSULATED CLAMP	2	EA	
28	013674-000	BACK, BURNER BOX	1	EA	
29	PB040195	# 50 ORIFICE FOR SEALED BURNER	1	EA	
29	PB040274	NO.58 - NAT	1	EA	
30	PD020005	8 X 1/2 PH.PN.HD.SMS.	8	EA	
31	PB040197	# 53 ORIFICE FOR SEALED BURNER	1	EA	
31	PB040271	#60 LP	1	EA	
32	PB050069	D-BASE	1	EA	
NI	PB050070	C-BASE	1	EA	
NI	PA080102	DGRT-D COMPLETE BURNER HEAD ASSEMBLY	1	EA	
NI	PA080101	DGRT-C COMPLETE BURNER HEAD ASSEMBLY	1	EA	

NON
ILLUSTRATED PART





Item	Part No.	Name	Qty	Uom	NOTES
NI	000915-000	LIMIT JUMPER	1	EA	
NI	PE070734	SINGLE OVEN HEADER	1	EA	
NI	005292-000	HARN,HEADER, MODEL 5 (SEE MODEL_HEADER)	1	EA	
Not Shown	NOTE	(BEFORE 3/3/10)		EA	
NI	023022-000	HARN, HEADER, MODEL 17 (SEE MODEL_HEADER)	1	EA	
Not Shown	NOTE	(ON OR AFTER 3/3/10)		EA	
NI	015001-000	WIRE HARNESS, MAIN, DSCD	1	EA	
Not Shown	NOTE	(BEFORE 3/3/10)		EA	
NI	021182-000	MAIN OVEN HARNESS - NLA	1	EA	
Comments for Part Num. 021182-000					
bradleysapplianceservice@shaw.ca on Apr 27, 2016					
SUBS TO: 024871-000 MAIN OVEN HARNESS					
Not Shown	NOTE	ON OR AFTER 3/3/10		EA	
NI	015866-000	WIRE HARNESS, CONTROL PANEL	1	EA	Not available online / Call for pricing and availability
Not Shown	NOTE	(BEFORE 3/3/10)		EA	
NI	020019-000	HARNESS, WRG, CONTROL	1	EA	
Not Shown	NOTE	(ON OR AFTER 3/3/10)		EA	



Appendix A:Pages Index

CAVITY INTERIOR 1
CONTROL AREA 2
DOOR ASSEMBLY 3
LOWER UNIT AND SIDE PANELS 4
OVEN ELECTRONICS 5
REAR SHEET METAL 6
SURFACE COOKING AREA 7
WIRING 8



Appendix B:Parts Index

000594-000	3	014199-000	7
000647-000	7	014202-000	7
000915-000	8	014240-000	4
002406-000	4	014241-000	4
002740-000	3	014246-000	4
002884-000	2	014551-000	2
002926-000	2	014553-000	6
002941-000	1	014554-000	6
003051-000	4	014752-000	1
003244-000	1	014764-000	4
003272-000	6	014765-000	4
003333-000	5	014892-000	7
003356-000	1	014923-000	1
003515-000	2	014924-000	1
003644-000	1	014932-000	1
003702-000	6	014934-000	1
003801-000	1, 4	015001-000	8
003860-000	1, 4, 5, 6, 7	015043-000	2, 2
004110-000	1	015052-000	7
004152-000	3	015096-000	4
004153-000	3	015105-000	2
004285-000	5	015106-000	7
005038-000	1	015170-000	2
005292-000	8	015174-000	2
006766-000	7, 7	015201-000	4
006807-000	3	015361-000	1
006808-000	3	015362-000	1, 1
008974-000	3	015394-000	1
009602-000	3	015413-000	3
013250-000	5	015579-000	3
013386-000	2	015581-000	3
013564-000	5	015607-000	6
013663-000	7	015615-000	5
013674-000	7	015866-000	8
013676-000	3	015931-000	6
013678-000	3	016476-000	7
013700-000	3	016477-000	7
014137-000	1	019046-002	3
014194-000	3	019046-003	3
014195-000	3	019046-004	3
		019046-005	3



019046-006	3	019048-027	3
019046-008	3	019259-000	3
019046-009	3	019289-000	3
019046-010	3	020019-000	8
019046-012	3	020403-000	1
019046-013	3	021182-000	8
019046-015	3	023022-000	8
019046-016	3	024102-000	1
019046-017	3	031679-000	1
019046-018	3	036047-000	4
019046-019	3	036268-000	4
019046-020	3	044178-000	4
019046-021	3	046142-556	4
019046-022	3	046838-000	3
019046-023	3	052525-2212	2
019046-024	3	A1002457	1
019046-025	3	A20010101	6
019046-026	3	A20012649	5
019046-027	3	A2001361	2
019048-002	3	A20014021	1
019048-003	3	A20014044	1
019048-004	3	A2002195	1
019048-005	3	A2002454	6
019048-006	3	A2009612	1
019048-008	3	A2009641	1
019048-009	3	A2009659	5
019048-010	3	A2009696	1
019048-012	3	A2009697	1
019048-013	3	B21010915	1
019048-015	3	B21010916	1
019048-016	3	B21011410	7
019048-017	3	G40015469	2
019048-018	3	PA010093	2
019048-019	3	PA010163	2
019048-020	3	PA010226	2
019048-021	3	PA020058	2, 2
019048-022	3	PA070003	2
019048-023	3	PA080083	7
019048-024	3	PA080099	7
019048-025	3	PA080100	7
019048-026	3	PA080101	7



PA080102	7	PD040004	2
PA080103	7	PD040005	6
PA080105	7	PD040152	6
PA080107	7	PD040164	4
PB020190	2	PE050206	1
PB020275	1	PE050208	5
PB040195	7	PE050250	5
PB040197	7	PE060094	3
PB040199	7	PE070147	1
PB040200	7	PE070734	8
PB040204	7	PE070889	7
PB040271	7	PJ010047	1
PB040274	7	PJ010048	1
PB040275	7	PJ010049	1
PB050067	7	PJ030033	2
PB050069	7	PJ030035	2
PB050070	7	PM010014	1
PB050071	7		
PB050072	7		
PB060107	1		
PB070058	7		
PB070079	5		
PB070246	3		
PD010012	2		
PD020002	3		
PD020005	7		
PD020006	2		
PD020010	1		
PD020014	1		
PD020032	2, 3, 4		
PD020033	2		
PD020043	4		
PD020046	2		
PD020048	1, 5		
PD020061	1		
PD020062	1		
PD020063	1, 3		
PD020232	1		
PD020269	2		
PD030109	5, 7		
PD030172	4		