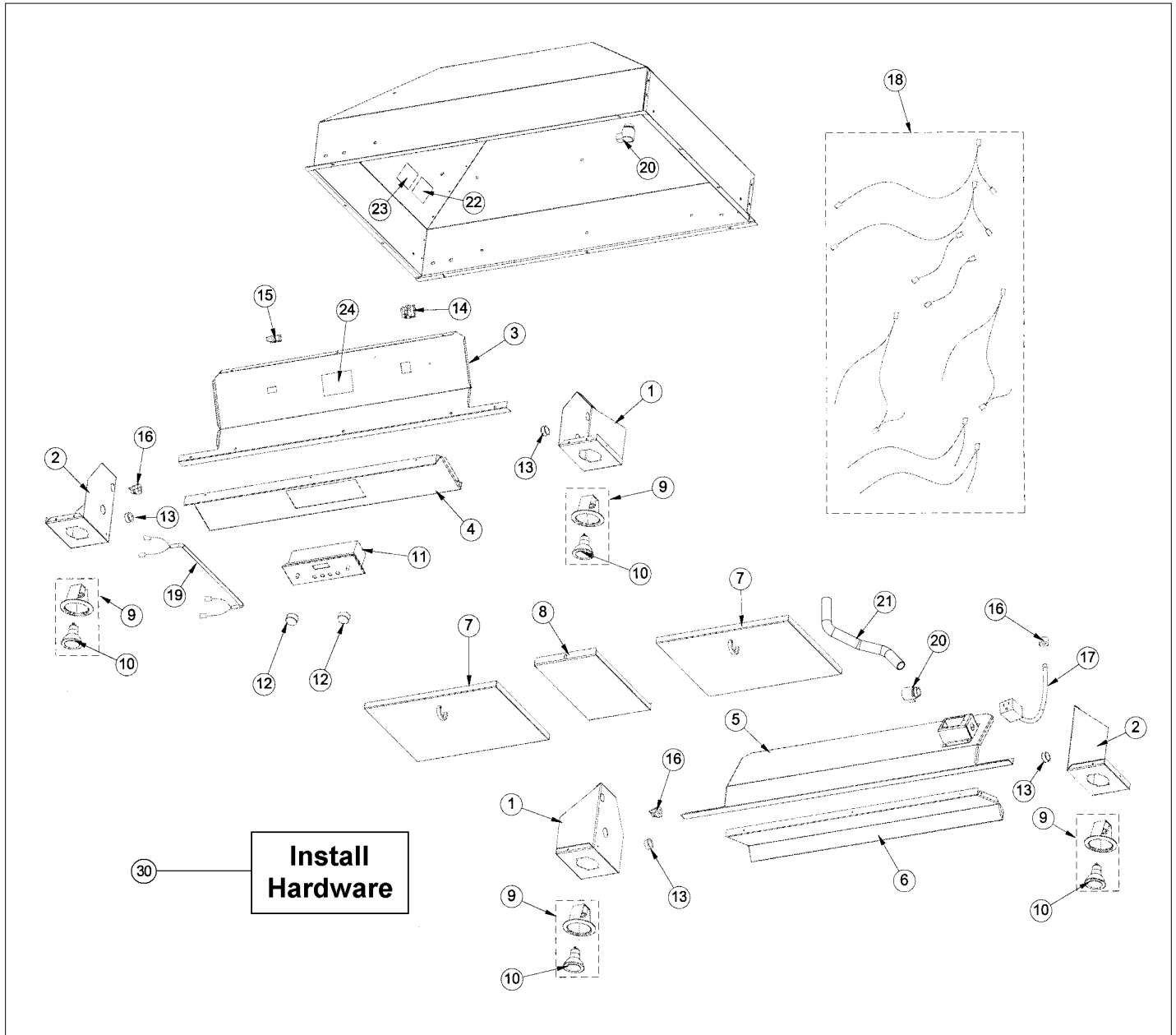


**DICV4232**

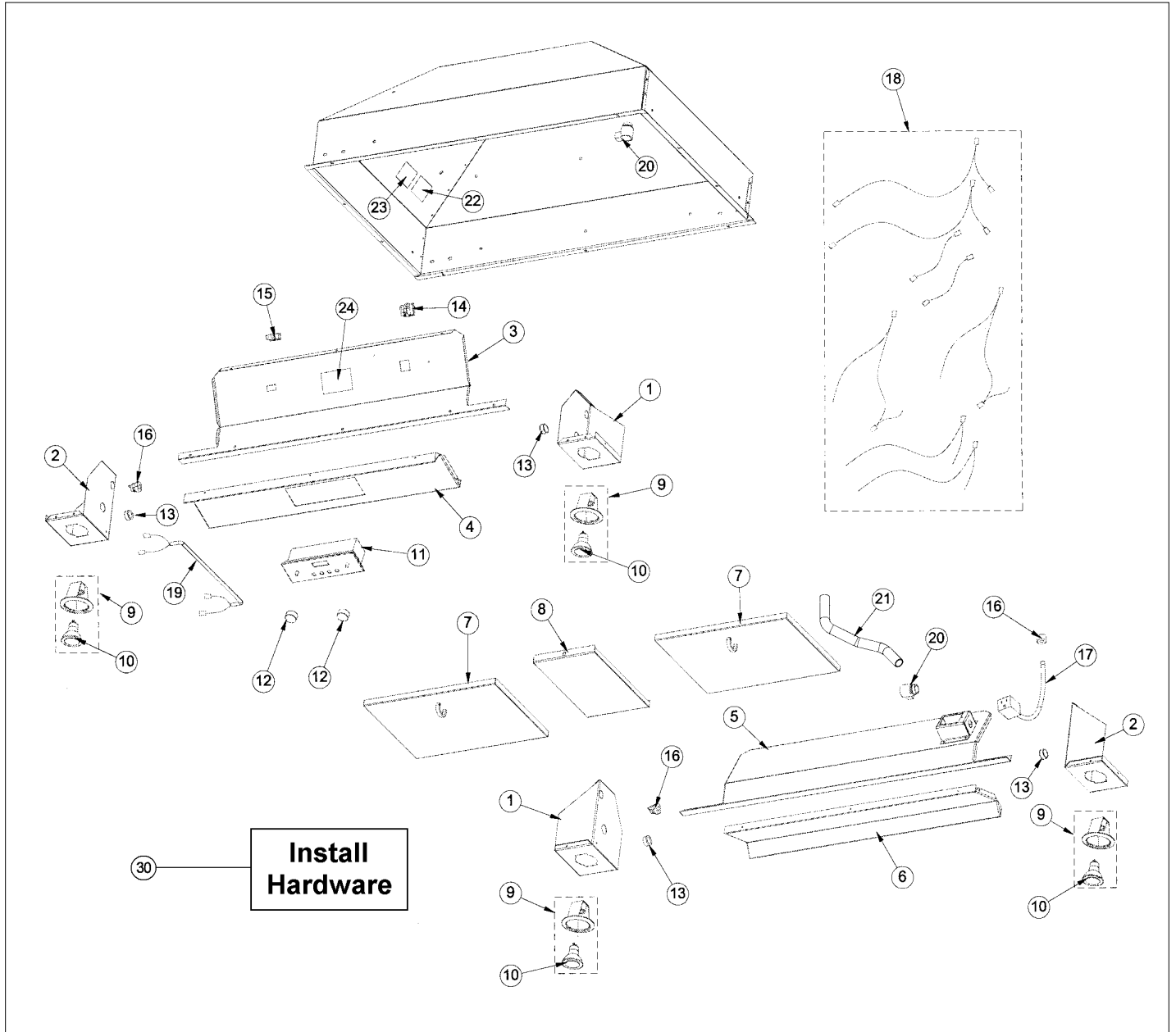
UNIT COMPONENTS .....	1
Appendix A:Pages Index .....	A
Appendix B:Parts Index .....	B



UNIT COMPONENTS



Item	Part No.	Name	Qty	Uom	NOTES
1	B2008711	42" HOOD I/S SIDE RH DBC4282	1	EA	
2	B2008712	42" HOOD I/S SIDE LH DBC4282	1	EA	
3	B2008184	42" CONTROL PANEL TOP DBC4282	1	EA	NO LONGER AVAILABLE, Not available online / Call for pricing and availability
Not Shown	B20011016	CONTROL PANEL TOP (DBC42) FRONT (DICV42)	1	EA	Not available online / Call for pricing and availability
4	B2008183	42" CONTROL PANEL DBC4282	1	EA	NO LONGER AVAILABLE, Not available online / Call for pricing and availability
5	B2009335	REAR CONTROL PANEL TOP (DICV42)	1	EA	NO LONGER AVAILABLE, Not available online / Call for pricing and availability
6	B2009325	REAR CONTROL PANEL (DICV42)	1	EA	NO LONGER AVAILABLE, Not available online / Call for pricing and availability
7	G31010266	30"/42" FILTER ASSEMBLY 11.75" X 10.375"	1	EA	
8	B2008198	FILTER SPACER DBC42/4882 2.313 X 10.75	1	EA	
9	PE050064	LIGHT ASSEMBLY	1	EA	
10	PE050081	50 WATT HALOGEN BULB	1	EA	
11	025084-000	SERVICE CONTROL PANEL/WIRE HARNESS ASSY	1	EA	
12	PA010089	KNOB (DESIGNER SERIES HOOD)	1	EA	
13	PD040005	SNAP BUSHING - 7/8"	1	EA	
14	PE070197	MALE SOCKET (3 PRONG)	1	EA	
15	PE070196	FEMALE SOCKET (2 PRONG)	1	EA	
16	PE070204	HEYCO STRAIN RELIEF - 7-P2	1	EA	
17	039680-000	CORD, PWR, SUPPLY, VNT HD	1	EA	
18	PE070444	WIRING KIT	1	EA	Not available online / Call for pricing and availability





Item	Part No.	Name	Qty	Uom	NOTES
19	PE070446	DICV BRIDGE HARNESS	1	EA	NO LONGER AVAILABLE, Not available online / Call for pricing and availability
20	PE070358	SNAP IN FLEXIBLE CONDUIT CLAMP(DCIH	1	EA	NO LONGER AVAILABLE, Not available online / Call for pricing and availability
21	PE070359	1/2" FLEXIBLE CONDUIT	1	EA	Not available online / Call for pricing and availability
22	PE020058	RATING LABEL (ADHESIVE)	1	EA	
23	PF030337	HOOD WARNING LABEL	1	EA	
24	PF030468	WIRING LABEL	1	EA	Not available online / Call for pricing and availability
25	PD020010	10 X 3/8 GREEN GROUNDING SCREW	1	EA	
26	PD030010	#10-24 KEPS NUT ZINC PLATED	1	EA	
27	PD020139	#8 X 1/2" P.H. FLAT TOP TRUSS U/C #2 TYPE AB 30 SS/ BRIGHT NICKEL PLATE	1	EA	
28	PD020032	SRW-8(A)X3/8"PH.WFR HD 7/16DIA*NICL	1	EA	
29	PC040010	POP RIVET (.063/GR -.125) GAMD42-A	1	EA	
30	PD020010	10 X 3/8 GREEN GROUNDING SCREW	1	EA	
Not Shown	NOTE	Install Hardware - Qty. 1		EA	
Not Shown	PD030010	#10-24 KEPS NUT ZINC PLATED	1	EA	
Not Shown	NOTE	Install Hardware - Qty. 4		EA	
Not Shown	PD020139	#8 X 1/2" P.H. FLAT TOP TRUSS U/C #2 TYPE AB 30 SS/ BRIGHT NICKEL PLATE	1	EA	
Not Shown	NOTE	INSTALL HARDWARE - QTY. 8		EA	



Appendix A:Pages Index

UNIT COMPONENTS ..... 1





Appendix B:Parts Index

025084-000	1
039680-000	1
B20011016	1
B2008183	1
B2008184	1
B2008198	1
B2008711	1
B2008712	1
B2009325	1
B2009335	1
G31010266	1
PA010089	1
PC040010	1
PD020010	1, 1
PD020032	1
PD020139	1, 1
PD030010	1, 1
PD040005	1
PE020058	1
PE050064	1
PE050081	1
PE070196	1
PE070197	1
PE070204	1
PE070358	1
PE070359	1
PE070444	1
PE070446	1
PF030337	1
PF030468	1