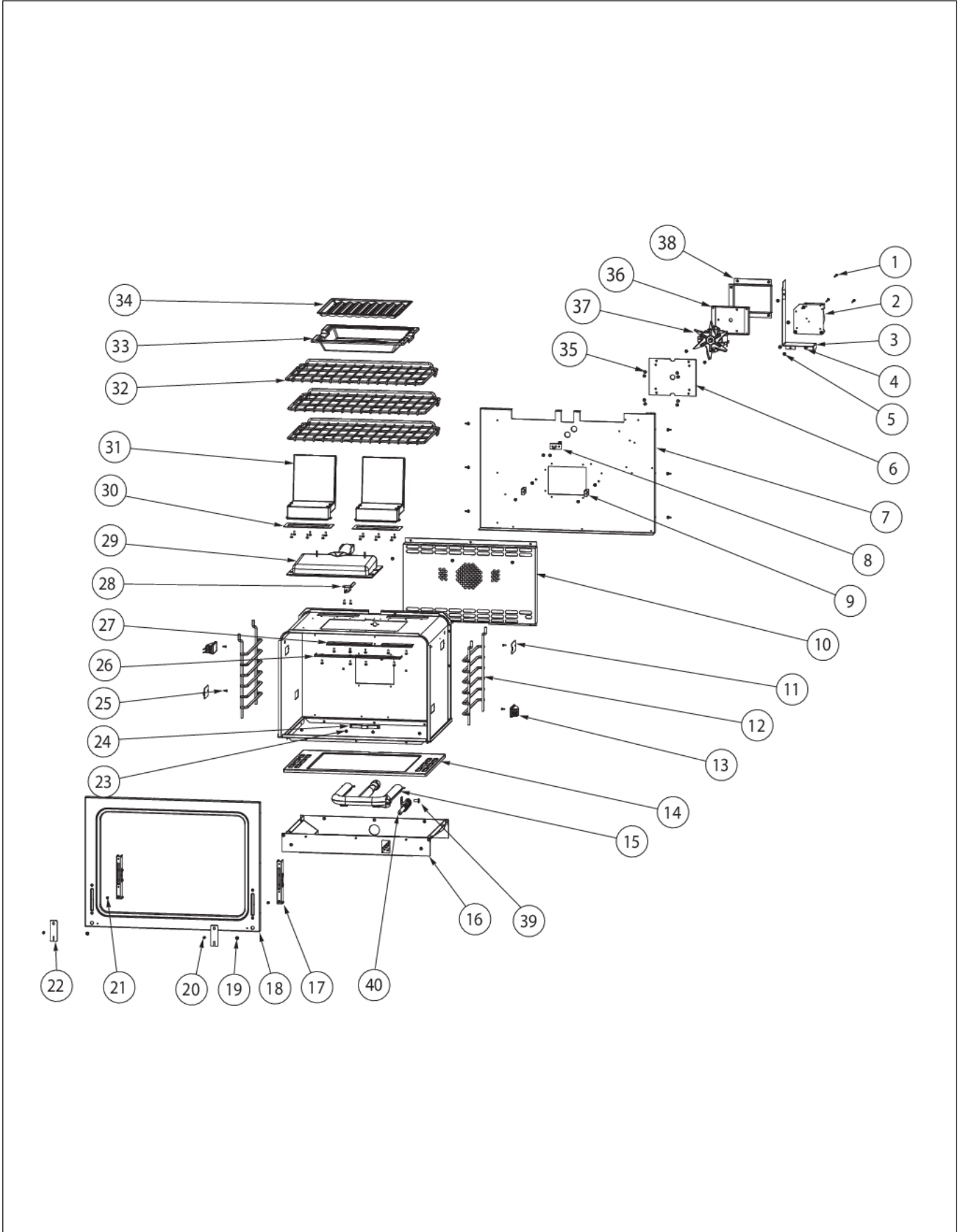


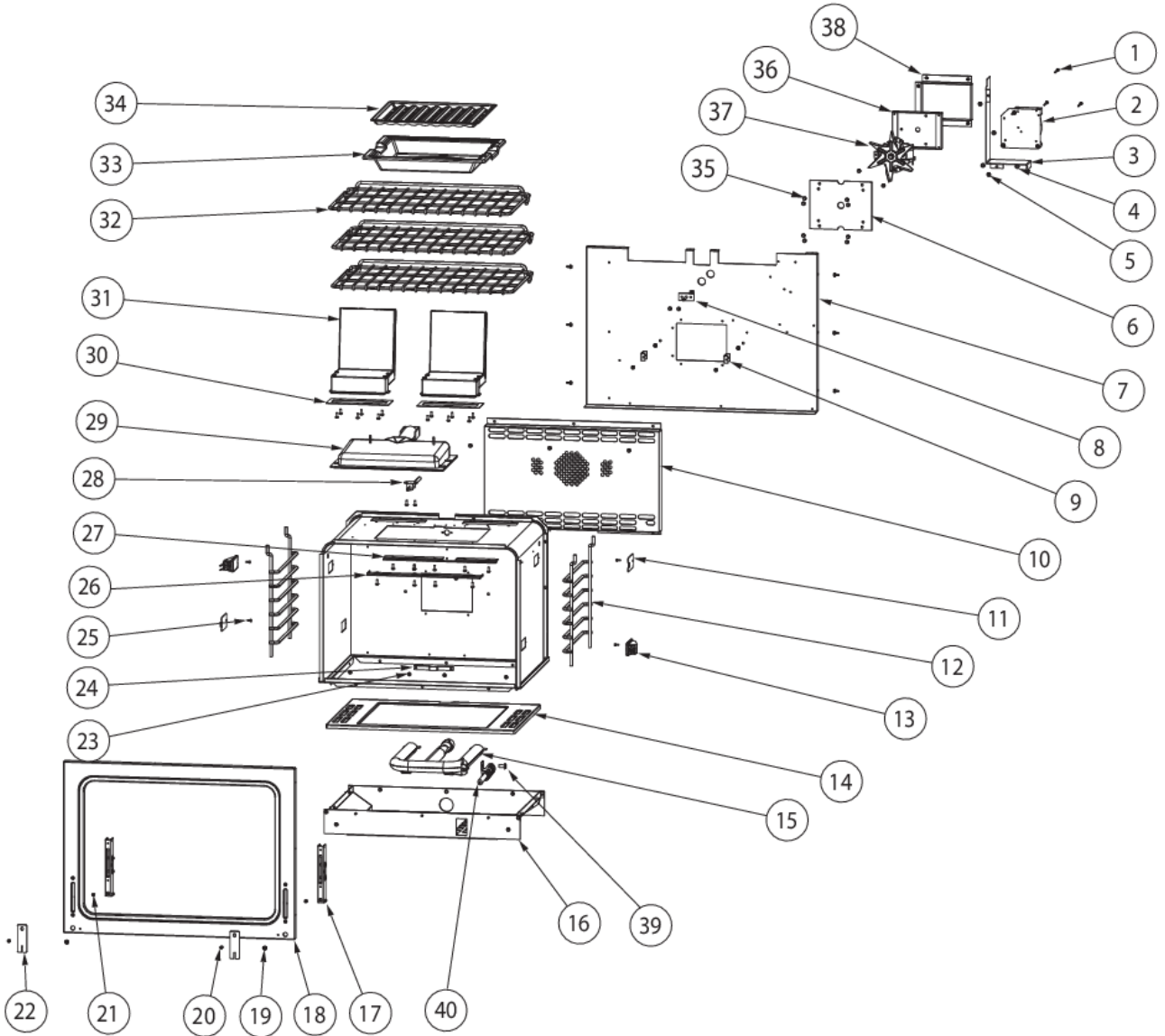
DCCG130-4B

CAVITY INTERIOR	1
CONTROL AREA	2
DOOR ASSEMBLY	3
LOWER UNIT AND SIDE PANELS	4
REAR SHEET METAL	5
SURFACE COOKING AREA	6
WIRING	7
Appendix A:Pages Index	A
Appendix B:Parts Index	B

CAVITY INTERIOR



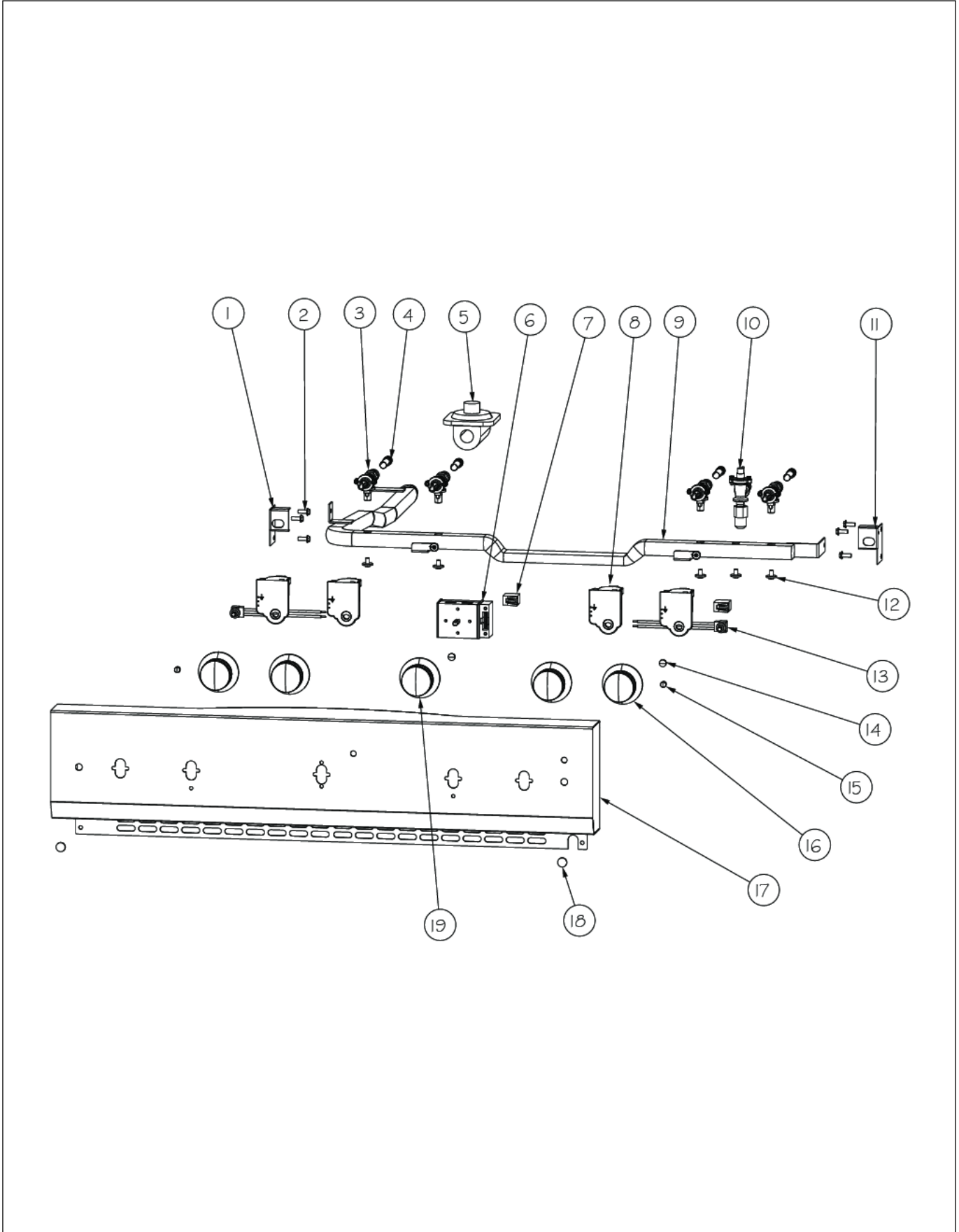
Item	Part No.	Name	Qty	Uom	NOTES
1	017177-000	SCREW, PHIL, PAN, AB TIP	3	EA	Not available online / Call for pricing and availability
2	003187-000	FLATPAK FAN MOTOR	1	EA	
3	016458-000	CHANNEL, AIR FLOW	1	EA	
4	PD040036	BUSHING - 7/16"O.D. X 1/4"TCK *SS*	3	EA	
5	003860-000	10-18 x .500 FASTNR,SCR,HXWH,STL,ZPLT	10	EA	
6	A1002596	CONVECTION FAN COVER (VDSC)	1	EA	
7	004626-000	PANEL, BACK, INSULATION, 30"	1	EA	Not available online / Call for pricing and availability
8	007008-000	RTD PROBE	1	EA	
9	A2001361	BACK SPACER (VGSC/VGSS)	2	EA	
10	014754-000	COVER, FAN, ASM, 30" GAS, BLUE PORCELAIN	1	EA	
11	014752-000	COVER, LT, BLUE PORCELAIN	2	EA	
12	PB060030	RACK SUPT REPL PB060010	2	EA	
13	005311-000	LAMP, OVEN, 120V/25W	2	EA	
14	014922-000	OVEN BOTTOM PAN ASM (VGSC306)	1	EA	
15	005329-000	BURNER, OVEN, ASM	1	EA	
NI	005330-000	BURNER, OVEN, ASM (LP)	1	EA	
16	014748-000	BURNER PAN ASM	1	EA	
17	031679-000	RECEPTACLE, HINGE	1	EA	
18	014756-000	FRAME, ASM, FRONT, 30" GAS, BLUE PORCELAIN	1	EA	
19	PD020014	10X3/4 PH TR HD SMS	2	EA	
20	PD020061	' #8 X 3/4 FLAT HD TEK. *SS*	2	EA	
21	PD020232	#8 X 3/4" PH PAN HEAD TEK SCREW (BLACK OXIDE)	2	EA	
22	007278-000	ARM HINGE CLIP	2	EA	
Not Shown	NOTE	(BEFORE 01/02/13)		EA	
22	049718-402	CLIP, RETAINER, HINGE, GLOSS BLACK ENAMEL	2	EA	





Item	Part No.	Name	Qty	Uom	NOTES
Not Shown	NOTE	(AFTER 01/02/13)		EA	
23	M0210443	SCREW-E SM VM0210443	4	EA	
24	A2004428	REAR BOTTOM BRCKT (VGSC306)	1	EA	
25	PD020067	' #6 X 3/8" PAN PHIL. TEK *SS*	4	EA	
26	020409-000	BRACKET, SPRT, FR, I/R BROILER	1	EA	
27	B2005589	REAR BROILER BRACKET	1	EA	Not available online / Call for pricing and availability
28	PB040171	BROIL IGNITION ELECTRODE	1	EA	
29	G3001876	IR BURNER ASSY (VGSC/RC) N/S	1	EA	
30	019162-000	EXHAUST GASKET	2	EA	
31	014870-000	EXHAUST, ASM, GAS, DESIGNER	2	EA	
32	PB060044	OVEN RK VDSC30/48RH REPL PB060019	3	EA	
33	014923-000	PAN, BROILER, BLUE PORCELAIN	1	EA	
34	014924-000	INSERT, BROILER PAN, BLUE PORCELAIN	1	EA	Not available online / Call for pricing and availability
35	PD020048	NO.10 X 1/2 TEK 410 SS SCREW	40	EA	
36	A2002595	CONVECTION FAN BOX (VDSC)	1	EA	
37	PE050057	CONVECTION FAN (VGSC306)	1	EA	
38	A2008467	INSULATION SHIELD	1	EA	
39	PD020048	NO.10 X 1/2 TEK 410 SS SCREW	1	EA	
40	PB040170	BAKE IGNITION ELECTRODE	1	EA	
NI	014751-000	OVEN CVTY, ASM, 30" GAS, BLUE PORCELAIN	1	EA	

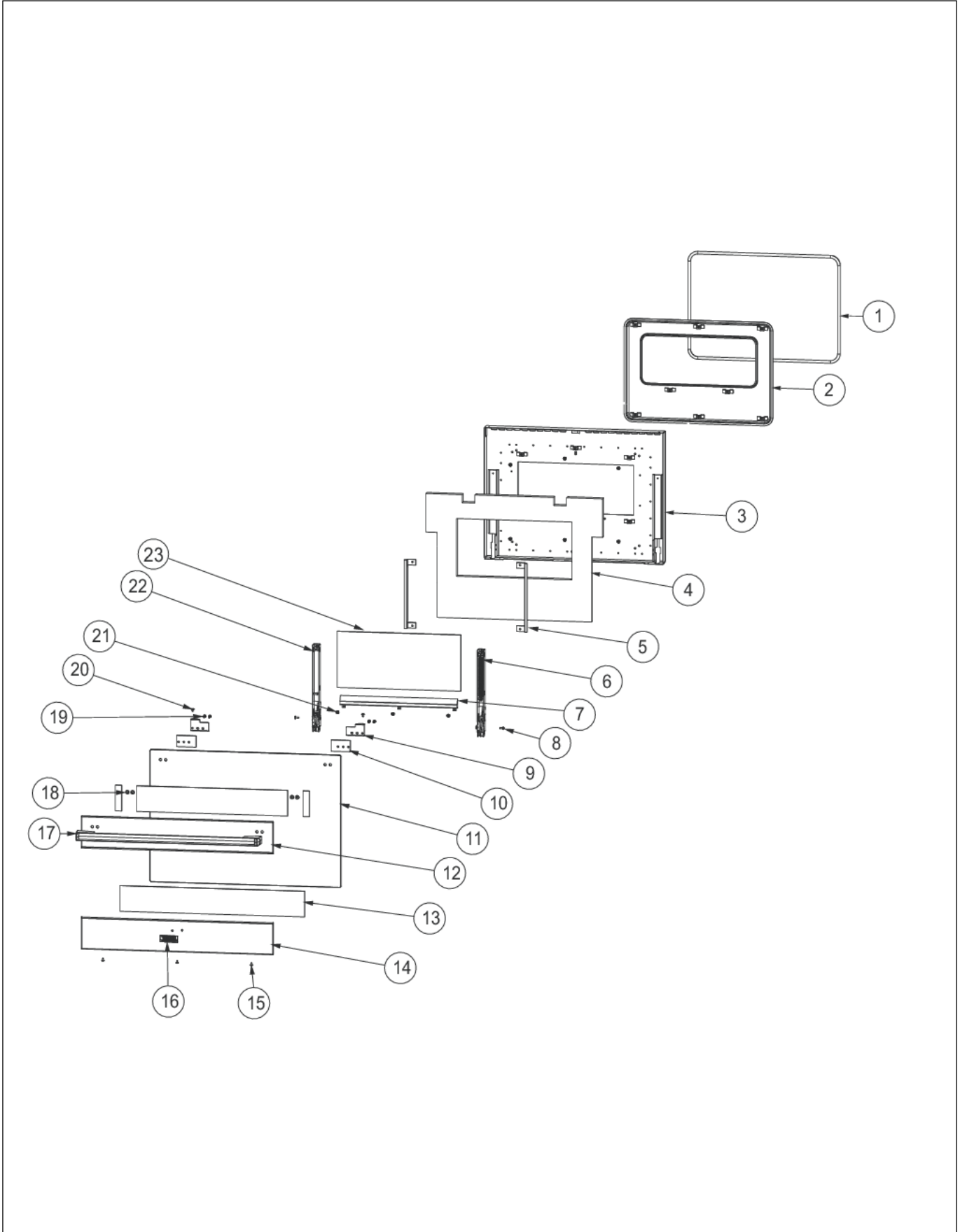
CONTROL AREA



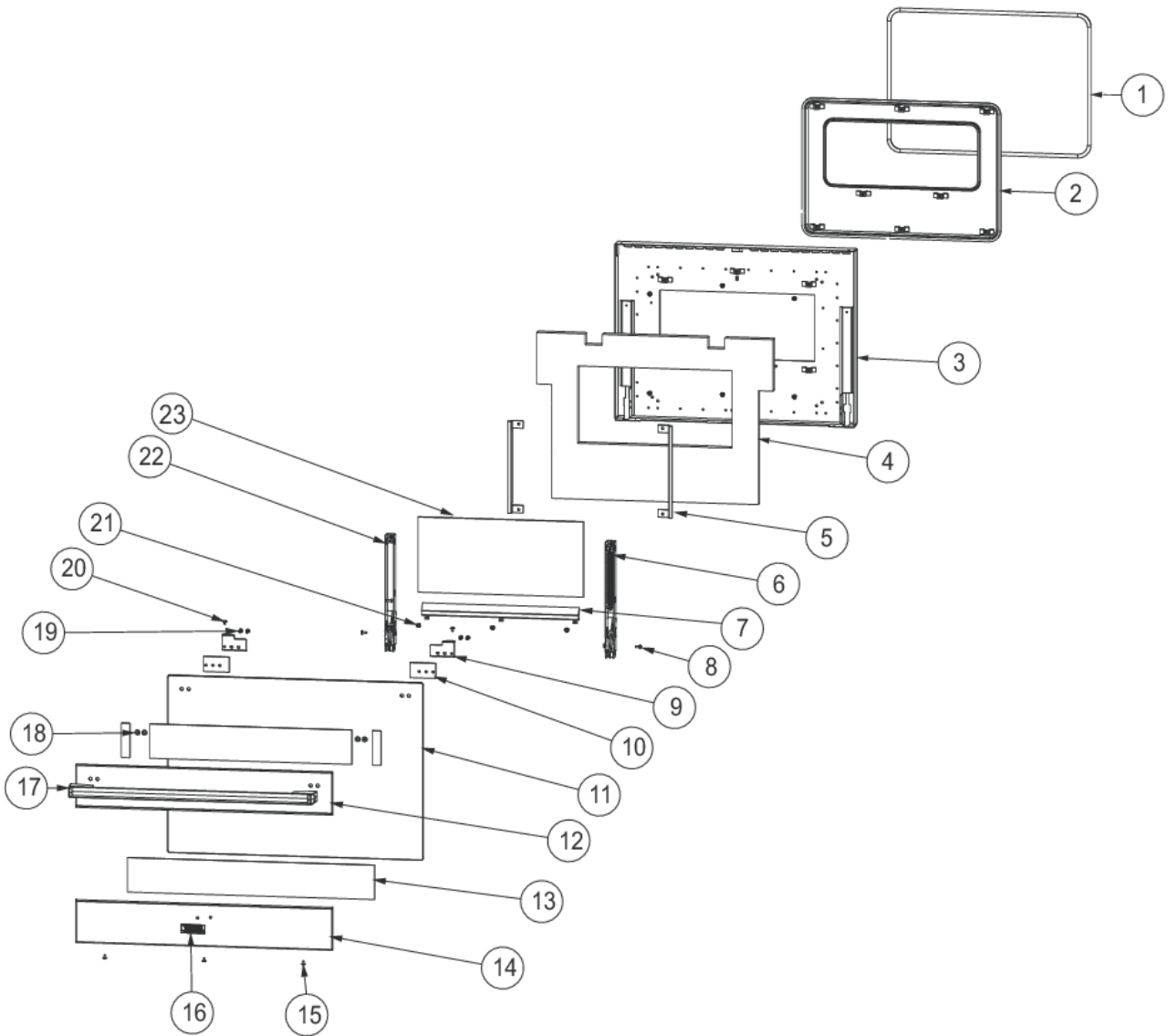


Item	Part No.	Name	Qty	Uom	NOTES
1	015990-000	BRACKET, LT, LF, DCCG130-4B	1	EA	
2	PD020048	NO.10 X 1/2 TEK 410 SS SCREW	6	EA	
3	003515-000	PA010157 VALVE AND BOLT KIT	4	EA	
4	PB020198	20" FLEX TUBING	4	EA	
5	023883-000	REGULATOR, PRSS, NAT, 5", DESIGNER	1	EA	
NI	023884-000	REGULATOR, PRSS, L.P., 10" DESIGNER	1	EA	
6	013213-000	TSTAT, SMPS, ELEC, 2-POS, .91" SHAFT, CB	1	EA	
7	015170-000	HOUSING, LIGHT, BLUE NEON, 125V	2	EA	
8	PA020058	IRIS SINGLE SPARK MODULE	4	EA	
9	015280-000	MANIFOLD, 30" DESIGNER RANGE	1	EA	Not available online / Call for pricing and availability
NI	002926-000	GAS MANIFOLD, REDESIGN	1	EA	
10	007147-000	SHUT OFF VALVE	1	EA	
11	014247-000	BRACKET, LT, RT, DCCG130-4B	1	EA	
12	PD010012	VALVE BOLT 1/4-20 UNC-2B 5/16" M.S.	5	EA	
13	G40015469	LIGHT SWITCH ASSEMBLY	2	EA	
14	015174-000	LENS, BLUE	2	EA	
15	PA010093	DESIGNER OVEN LT SWITCH KNOB	2	EA	
16	PA010163	DGRT KNOB-CHROME W/BLACK SLEEVE	4	EA	
17	013671-2211	CONTROL PANEL ASM, DCCG130-4B	1	EA	
18	PD040004	GROMMET BUMPER	2	EA	
19	014489-000	KNOB, OVEN	1	EA	

DOOR ASSEMBLY

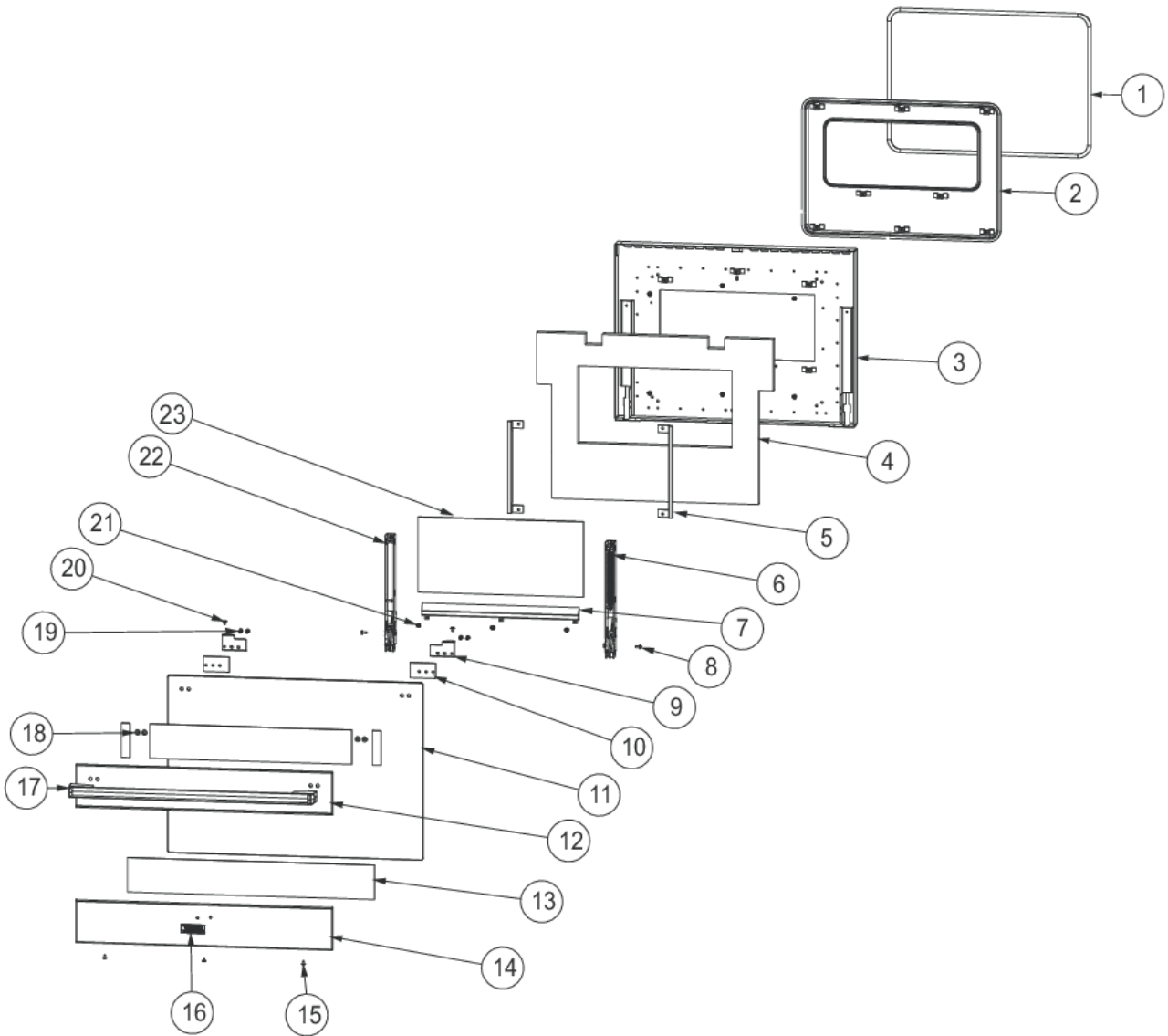


Item	Part No.	Name	Qty	Uom	NOTES
1	000042-000	30" DOOR GASKET	1	EA	
2	014926-000	PLUG, DOOR, ASM, DESIGNER, 30"	1	EA	
3	014261-000	LINER, DOOR, ASM, BLUE PORCELAIN	1	EA	
4	005475-000	DOOR INSULATION	1	EA	
5	007583-000	BRACKET, GLASS	2	EA	
6	008276-000	HINGE, DOOR	1	EA	
7	015865-000	COVER, SCREW, DOOR, DCCG130-4B	1	EA	
8	PD010003	10-24 X 1/2 PH.TR.HD.SERD.M.S.	2	EA	
9	019173-000	BRACKET, DESIGNER GAS	2	EA	
10	008971-000	SPACER, DOOR, HANDLE	2	EA	
11	013676-000	GLASS, DOOR SKIN, DESIGNER RANGE	1	EA	
12	NON REPLACABLE	TRIM, DOOR, UPPER 30" RANGE	1	EA	
13	014194-000	3M VHB TAPE, 4991	1	EA	
14	NON REPLACABLE	TRIM, DOOR, LOWER 30" RANGE	1	EA	
15	PD020032	SRW-8(A)X3/8"PH.WFR HD 7/16DIA*NICL	3	EA	
16	013700-000	2.75" DESIGNER LOGO WITH PINS	1	EA	
17	009602-000	HANDLE, ASM	1	EA	
18	NON REPLACABLE	GLASS TO DOOR SKIN	4	EA	
19	008974-000	SCREW 10 - 32 X 3/4 SLOT HEX WASHER W/ LOCTITE	3	EA	
20	PD020063	SCREW-#8(A) X 3/8"PH WFR HD/BK OXID	2	EA	
21	PD020014	10X3/4 PH TR HD SMS	9	EA	
22	013290-000	HINGE, DOOR, VGCC36" - PINK SPRING	1	EA	

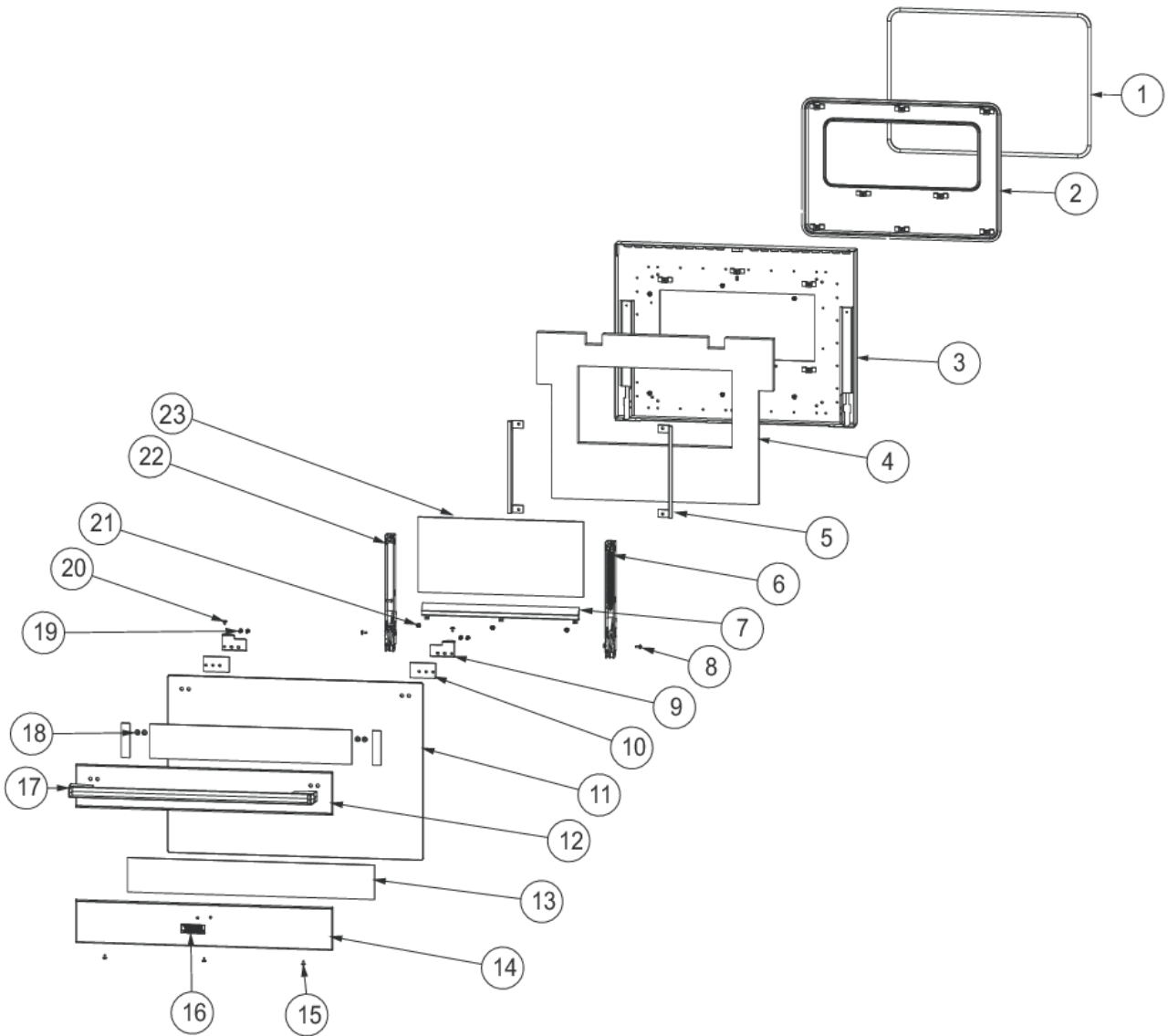




Item	Part No.	Name	Qty	Uom	NOTES
Comments for Part Num. 013290-000					
CAREYSAPPLIANCE@HOTMAIL.COM on Feb 15, 2018 in door view hinges are showing 2 different hinges #15) part 002740-000 #17) part 013290-000 these part numbers in middleby do not cross over to each other please correct with the correct part numbers Thanks Dan					
23	PE060039	GLASS-HEAT TREATED (HB2) VDSC	1	EA	
Not Shown	NOTE	(NOT FIELD REPLACEABLE - MUST ORDER SKIN, DOOR, ASM, 30 DES SS)		EA	
NI	013679-000	SKIN, DOOR, ASM	1	EA	
NI	016961-002	SKIN,DOOR,ASM, 30 DES BK	1	EA	
NI	016961-003	SKIN,DOOR,ASM, 30 DES BT	1	EA	
NI	016961-004	SKIN,DOOR,ASM, 30 DES SG	1	EA	
NI	016961-005	SKIN,DOOR,ASM, 30 DES GG	1	EA	
NI	016961-006	SKIN,DOOR,ASM, 30 DES WH	1	EA	
NI	016961-007	SKIN, DOOR, ASM, 30 DES AL	1	EA	Not available online / Call for pricing and availability
NI	016961-008	SKIN,DOOR,ASM, 30 DES BU	1	EA	
NI	016961-009	SKIN,DOOR,ASM, 30 DES LE	1	EA	
NI	016961-010	SKIN,DOOR,ASM, 30 DES MJ	1	EA	
NI	016961-011	SKIN, DOOR, ASM, 30 DES FG	1	EA	Not available online / Call for pricing and availability
NI	016961-012	SKIN,DOOR,ASM, 30 DES VB	1	EA	
NI	016961-013	SKIN,DOOR,ASM, 30 DES CB	1	EA	
NI	016961-014	SKIN, DOOR, ASM, 30 DES EP	1	EA	Not available online / Call for pricing and availability
NI	016961-015	SKIN,DOOR,ASM, 30 DES PL	1	EA	
NI	016961-016	SKIN,DOOR,ASM, 30 DES CH	1	EA	
NI	016961-017	SKIN,DOOR,ASM, 30 DES TP	1	EA	



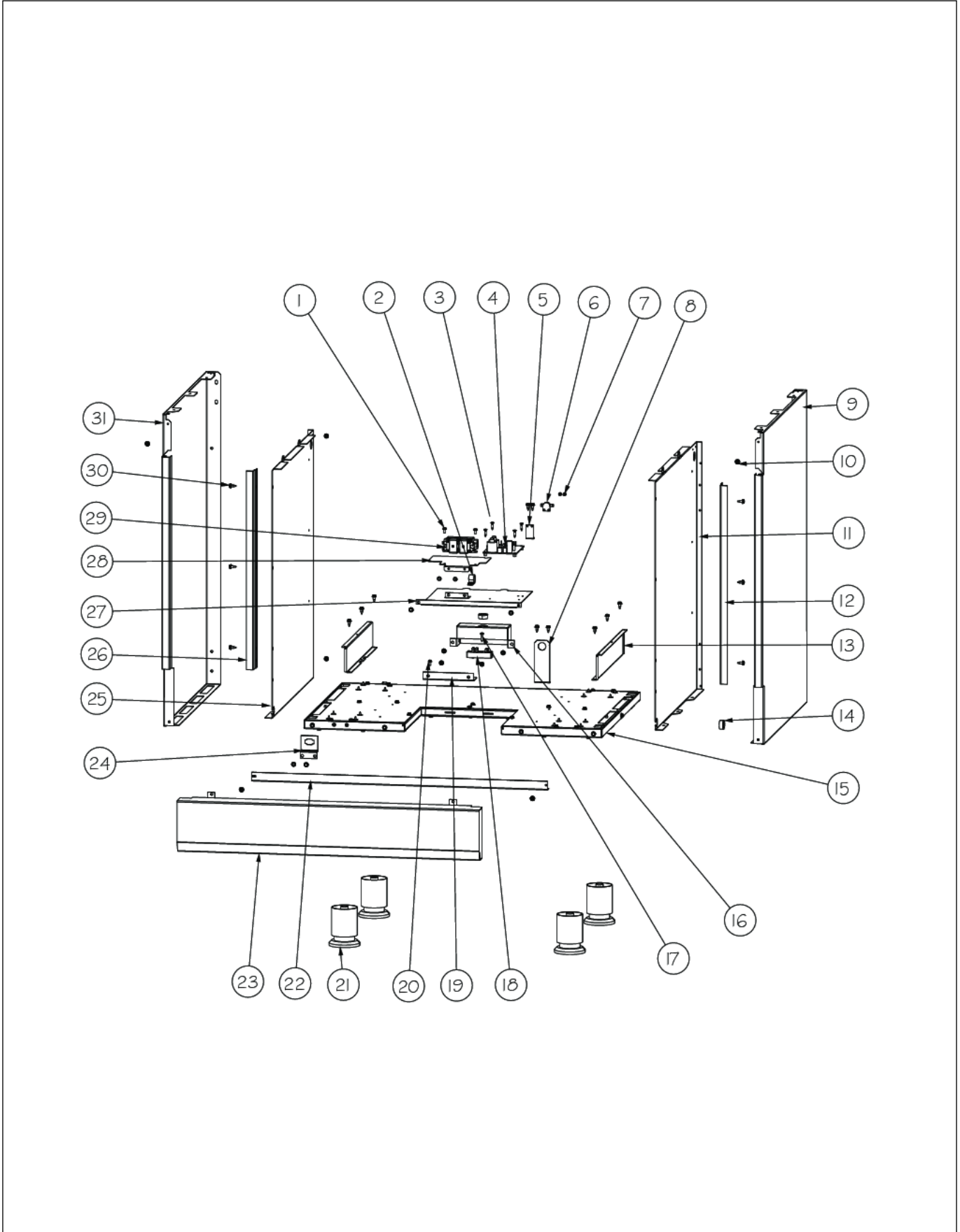
Item	Part No.	Name	Qty	Uom	NOTES
NI	016961-018	SKIN,DOOR,ASM, 30 DES CW NLA	1	EA	
NI	016961-019	SKIN,DOOR,ASM, 30 DES OG	1	EA	
NI	016961-020	SKIN,DOOR,ASM, 30 DES GM	1	EA	
NI	016961-021	SKIN,DOOR,ASM, 30 DES SA	1	EA	
NI	016961-022	SKIN,DOOR,ASM, 30 DES SE	1	EA	
NI	016961-023	SKIN,DOOR,ASM, 30 DES IB	1	EA	
NI	016961-024	SKIN,DOOR,ASM, 30 DES AR	1	EA	
NI	016961-025	SKIN,DOOR,ASM, 30 DES RR	1	EA	
NI	016961-026	SKIN,DOOR,ASM, 30 DES PM	1	EA	
NI	016961-027	SKIN,DOOR,ASM, 30 DES MS	1	EA	
NI	013689-000	DOOR, ASM, DCCG130	1	EA	
NI	016962-002	DOOR,ASM, 30 DES BK	1	EA	
NI	016962-003	DOOR,ASM, 30 DES BT	1	EA	
NI	016962-004	DOOR,ASM, 30 DES SG	1	EA	
NI	016962-005	DOOR,ASM, 30 DES GG	1	EA	
NI	016962-006	DOOR,ASM, 30 DES WH	1	EA	
NI	016962-007	DOOR, ASM, 30 DES AL	1	EA	Not available online / Call for pricing and availability
NI	016962-008	DOOR,ASM, 30 DES BU	1	EA	
NI	016962-009	DOOR,ASM, 30 DES LE	1	EA	
NI	016962-010	DOOR,ASM, 30 DES MJ	1	EA	
NI	016962-011	DOOR, ASM, 30 DES FG	1	EA	Not available online / Call for pricing and availability
NI	016962-012	DOOR,ASM, 30 DES VB	1	EA	
NI	016962-013	DOOR,ASM, 30 DES CB	1	EA	
NI	016962-014	DOOR, ASM, 30 DES EP	1	EA	Not available online / Call for pricing and availability
NI	016962-015	DOOR,ASM, 30 DES PL	1	EA	
NI	016962-016	DOOR,ASM, 30 DES CH	1	EA	
NI	016962-017	DOOR,ASM, 30 DES TP	1	EA	
NI	016962-018	DOOR,ASM, 30 DES CW NLA	1	EA	





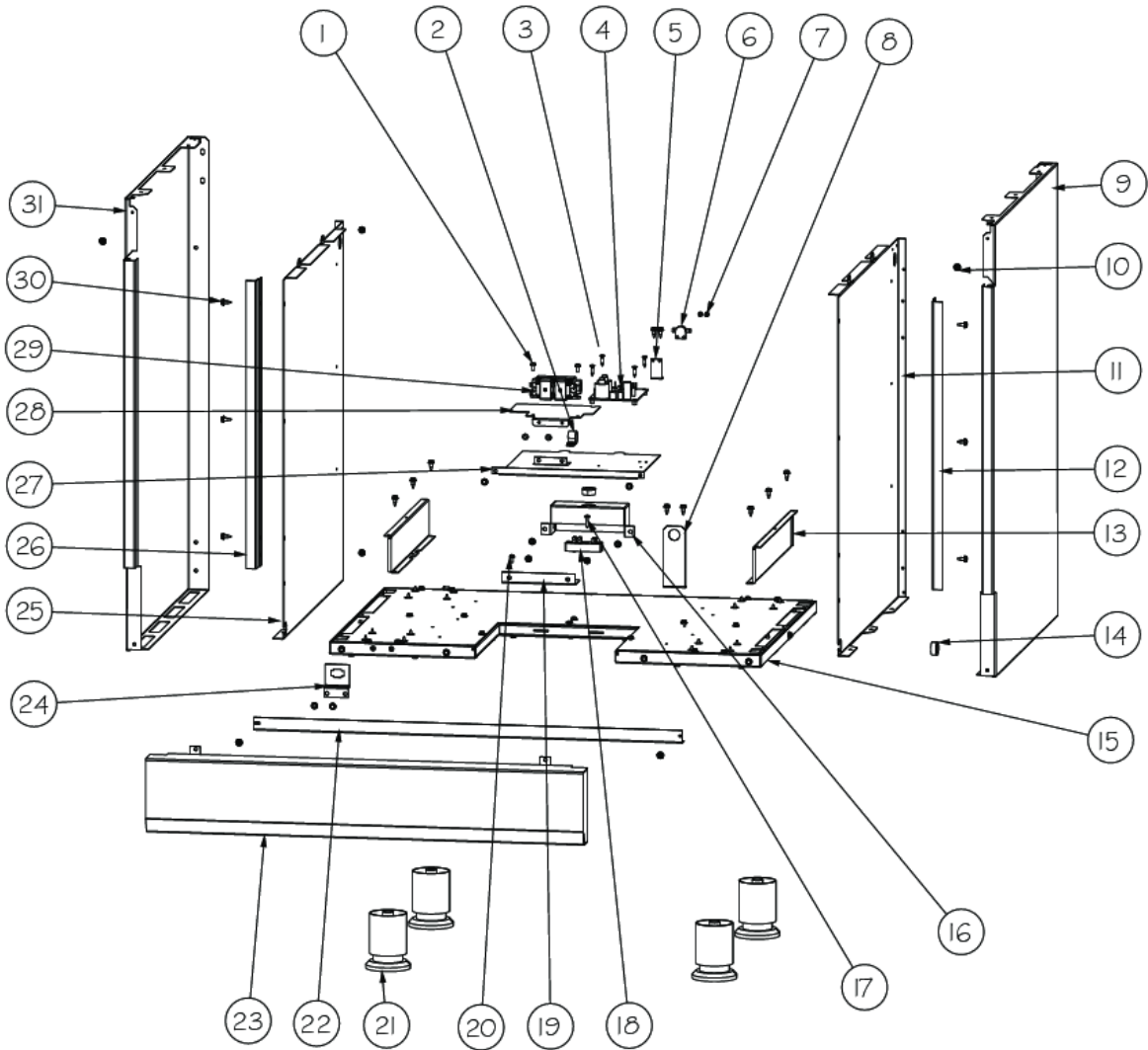
Item	Part No.	Name	Qty	Uom	NOTES
NI	016962-019	DOOR,ASM, 30 DES OG	1	EA	
NI	016962-020	DOOR,ASM, 30 DES GM	1	EA	
NI	016962-021	DOOR,ASM, 30 DES SA	1	EA	
NI	016962-022	DOOR,ASM, 30 DES SE	1	EA	
NI	016962-023	DOOR,ASM, 30 DES IB	1	EA	
NI	016962-024	DOOR,ASM, 30 DES AR	1	EA	
NI	016962-025	DOOR,ASM, 30 DES RR	1	EA	
NI	016962-026	DOOR,ASM, 30 DES PM	1	EA	
NI	016962-027	DOOR,ASM, 30 DES MS	1	EA	

LOWER UNIT AND SIDE PANELS



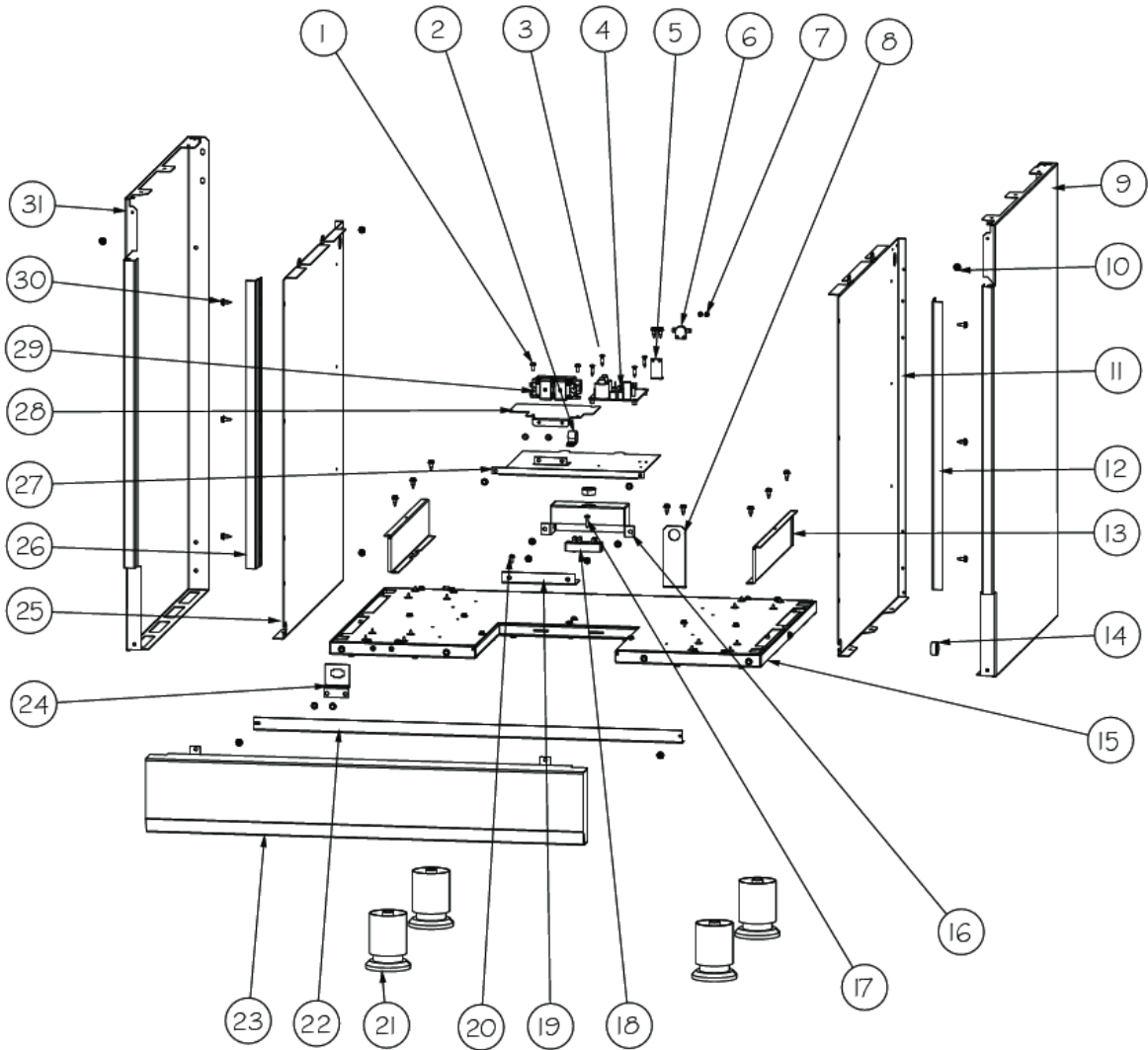


Item	Part No.	Name	Qty	Uom	NOTES
1	PD020004	10X3/8PH.HD.TYPE 25 REPL PD040125	4	EA	
2	PD030109	INSULATED CLAMP	1	EA	
3	PD020061	' #8 X 3/4 FLAT HD TEK. *SS*	4	EA	
4	PA020056	NLA - See TC-0063D-SP for kit number (see comments)	1	EA	
NI	034880-000	DSI MODULE HEAT SHIELD KIT	1	EA	
5	A20014089	DISC BRACKET	1	EA	
6	PJ030039	BI-METAL THERMOSTAT 275 DEGREES	1	EA	
7	PD020067	' #6 X 3/8" PAN PHIL. TEK *SS*	1	EA	
8	014642-000	BRACKET, BAKE ORIFICE	1	EA	
9	014764-000	PANEL, SIDE, DESIGNER, RH, SS	2	EA	
10	003801-000	SHOULDER SCREW, #10	4	EA	
11	013659-000	INSULATION, PNL, SIDE, RH	2	EA	
12	019175-000	BRACKET, SIDE, RH	2	EA	
13	013661-000	BRACKET, SUPPORT	2	EA	
14	PD040005	SNAP BUSHING - 7/8"	2	EA	
15	015831-000	BASE ASM	1	EA	Not available online / Call for pricing and availability
16	031961-000	COVER, TERM. BLOCK	1	EA	
17	PD020232	#8 X 3/4" PH PAN HEAD TEK SCREW (BLACK OXIDE)	1	EA	
18	007400-000	BLOCK, TERMINAL	1	EA	
19	007484-000	TERMINAL, BLOCK, BRACKET	1	EA	
20	PD020010	10 X 3/8 GREEN GROUNDING SCREW	1	EA	
21	044178-000	RANGE, LEG, ADJUSTABLE	4	EA	
22	006199-000	SPACER, BOT, 30", GSC	1	EA	
23	019359-000	KICKPLATE, 30" GAS DESG RNG, SS	1	EA	
23	019360-002	KICKPLATE, 30" DESG RNG, BK	1	EA	
23	019360-003	KICKPLATE, 30" DESG RNG, BT	1	EA	
23	019360-004	KICKPLATE, 30" DESG RNG, SG	1	EA	





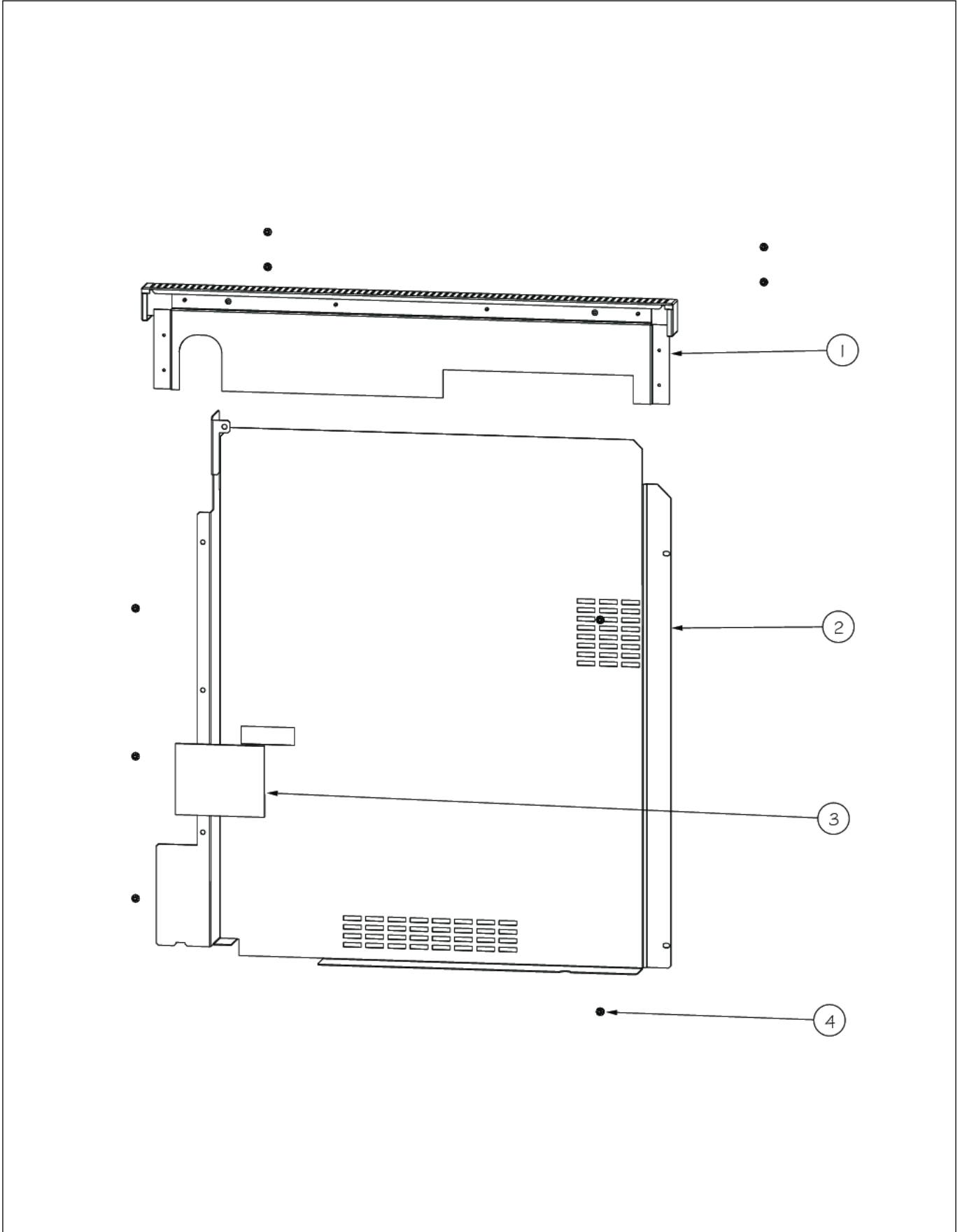
Item	Part No.	Name	Qty	Uom	NOTES
23	019360-005	KICKPLATE, 30" DESG RNG, GG	1	EA	
23	019360-006	KICKPLATE, 30" DESG RNG, WH	1	EA	
23	019360-008	KICKPLATE, 30" DESG RNG, BU	1	EA	
23	019360-009	KICKPLATE, 30" DESG RNG, LE	1	EA	
23	019360-010	KICKPLATE, 30" DESG RNG, MJ	1	EA	
23	019360-012	KICKPLATE, 30" DESG RNG, VB	1	EA	
23	019360-013	KICKPLATE, 30" DESG RNG, CB	1	EA	
23	019360-015	KICKPLATE, 30" DESG RNG, PL	1	EA	
23	019360-016	KICKPLATE, 30" DESG RNG, CH	1	EA	
23	019360-017	KICKPLATE, 30" DESG RNG, TP	1	EA	
23	019360-018	KICKPLATE, 30" DESG RNG, CW NLA	1	EA	
23	019360-019	KICKPLATE, 30" DESG RNG, OG	1	EA	
23	019360-020	KICKPLATE, 30" DESG RNG, GM	1	EA	
23	019360-021	KICKPLATE, 30" DESG RNG, SA	1	EA	
23	019360-022	KICKPLATE, 30" DESG RNG, SE	1	EA	
23	019360-023	KICKPLATE, 30" DESG RNG, IB	1	EA	
23	019360-024	KICKPLATE, 30" DESG RNG, AR	1	EA	
23	019360-025	KICKPLATE, 30" DESG RNG, RR	1	EA	
23	019360-026	KICKPLATE, 30" DESG RNG, PM	1	EA	
23	019360-027	KICKPLATE, 30" DESG RNG, MS	1	EA	
24	005280-000	DISCONNECT BRKT	1	EA	
25	013660-000	INSULATION, PNL, SIDE, LH	1	EA	
26	019176-000	BRACKET, SIDE, LH	1	EA	
27	024416-000	TRAY, MTG, DESIGNER	1	EA	Not available online / Call for pricing and availability
28	024415-000	TRAY, MTG, DESIGNER	1	EA	
29	009112-000	VALVE, SOL, DOUBLE	1	EA	





Item	Part No.	Name	Qty	Uom	NOTES
30	003860-000	10-18 x .500 FASTNR,SCR,HXWH,STL,ZPLT	26	EA	
31	014765-000	PANEL, SIDE, DESIGNER, LH, SS	1	EA	

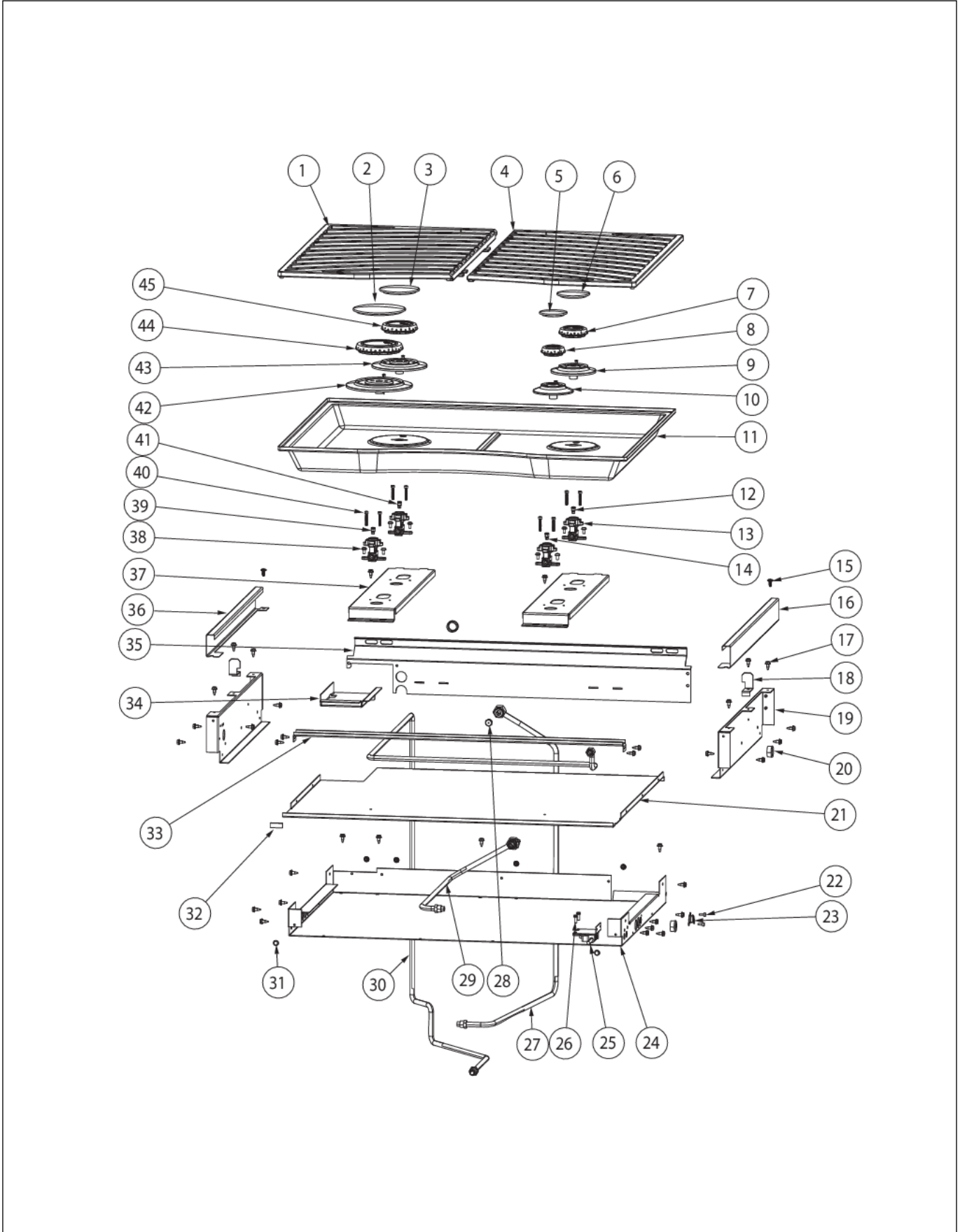
REAR SHEET METAL



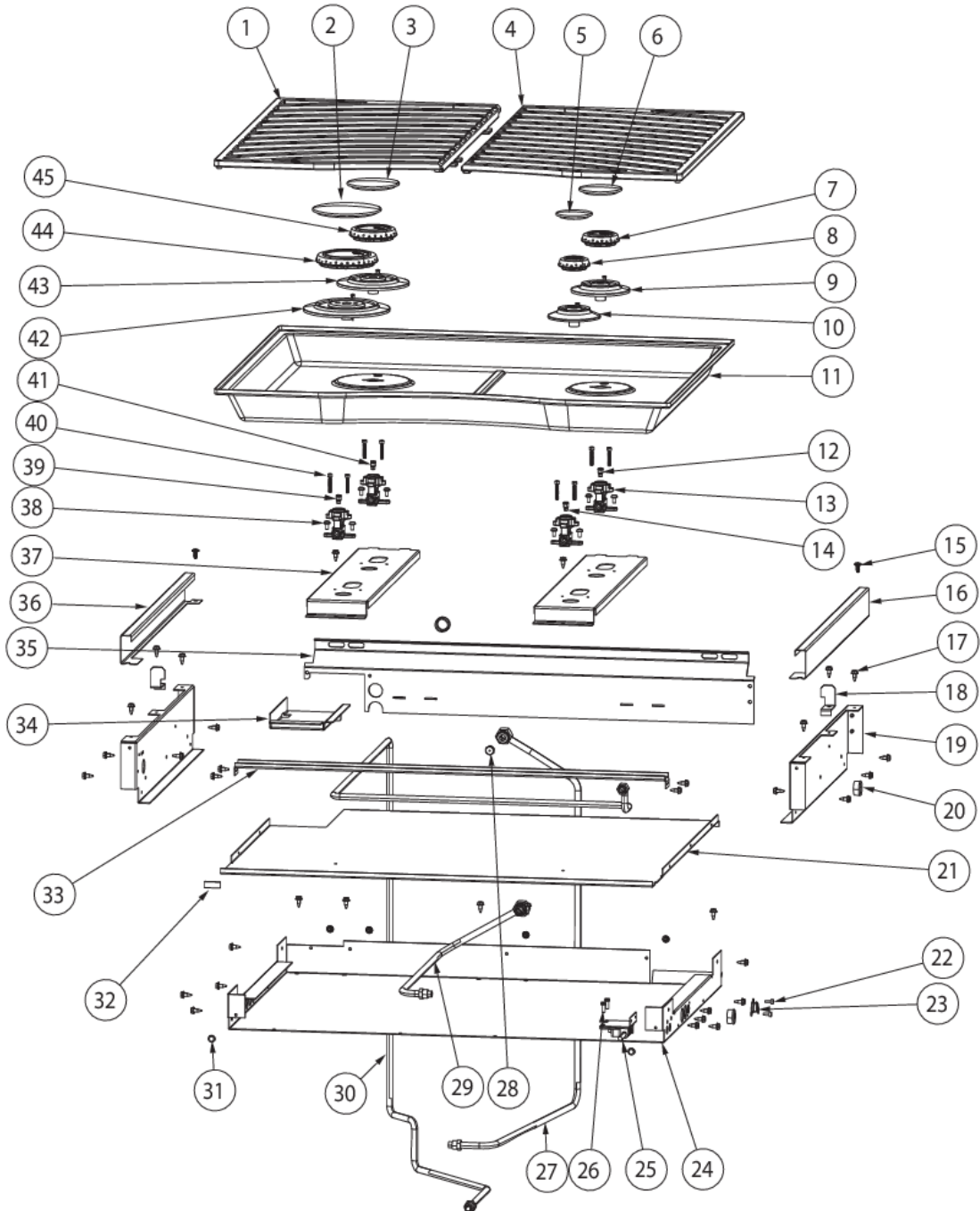


Item	Part No.	Name	Qty	Uom	NOTES
1	015931-000	ISLAND TRIM ASM, 30" DESIGNER	1	EA	
2	032238-000	PANEL, BACK	1	EA	Not available online / Call for pricing and availability
3	004285-000	INSULATION, FOIL- BACKED,4"x5"	1	EA	
4	003860-000	10-18 x .500 FASTNR,SCR,HXWH,STL,ZPLT	9	EA	

SURFACE COOKING AREA



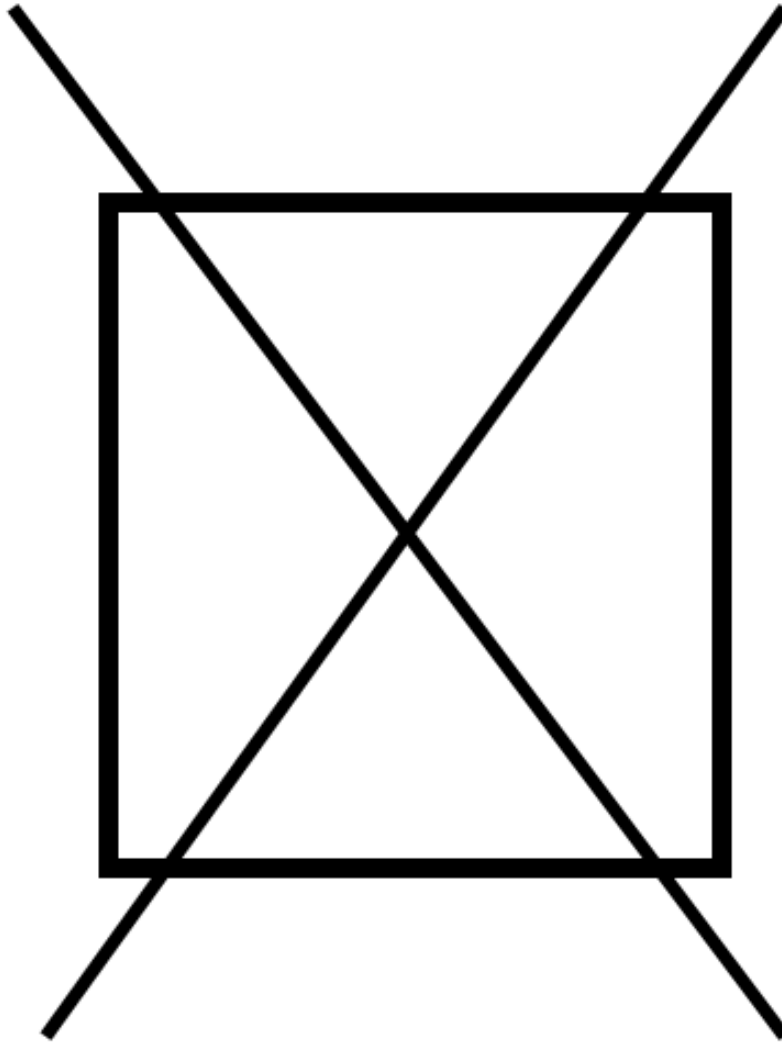
Item	Part No.	Name	Qty	Uom	NOTES
1	016476-000	LEFT GRATE, 30" DESIGNER RANGE	1	EA	
2	PA080083	D BURNER CAP *MATTE BLACK*	1	EA	
3	PA080107	DGRT-C BURNER CAP- BLACK	1	EA	
4	016477-000	RIGHT GRATE, 30" DESIGNER RANGE	1	EA	
5	PA080103	DGRT-A BURNER CAP- BLACK	1	EA	
6	PA080105	DGRT-B BURNER CAP- BLACK	1	EA	
7	PA080100	DGRT-B COMPLETE BURNER HEAD ASSEMBLY	1	EA	
8	PA080099	DGRT-ACOMPLETE BURNER HEAD ASSEMBLY	1	EA	
9	PB050071	B-BASE	1	EA	
10	PB050072	A-BASE	1	EA	
11	E91011410BK	BURNER PAN, DGRT300 *BK*	1	EA	
11	B21011410	BURNER PAN - SS, DGRT300	1	EA	
12	PB040236	#55 NAT	1	EA	
NI	PB040204	#67 LP	1	EA	
13	PB050067	JETHOLDER	3	EA	
14	PB040200	#57 ORIFICE - LP	1	EA	
NI	PB040275	NO.70 ORIFICE - LP	1	EA	
15	003801-000	SHOULDER SCREW, #10	1	EA	
16	013986-000	TRIM, SIDE, RT, D130	1	EA	
17	003860-000	10-18 x .500 FASTNR,SCR,HXWH,STL,ZPLT	21	EA	
18	015106-000	SIDE TRIM SUPPORT	2	EA	
19	013663-000	BURNER BOX, SIDE, RT	2	EA	
20	PD040005	SNAP BUSHING - 7/8"	3	EA	
21	013670-000	BURNER BOX, DCCG130	1	EA	
22	PD020067	' #6 X 3/8" PAN PHIL. TEK *SS*	1	EA	
23	PJ030022	FAN SWITCH (HI-LIMIT SWITCH)	1	EA	
24	013662-000	CAVITY, TOP, DCCG130-4B	1	EA	
25	PE050208	DOOR SWITCH	1	EA	
26	PD020060	10 X 1/2" (5/16)HEX WSHER HD.(T)A	1	EA	





Item	Part No.	Name	Qty	Uom	NOTES
27	014789-000	TUBING, BROIL ASM	1	EA	
28	PB040026	IR BURNER ORIFICE - #48 NAT.	1	EA	
NI	PB040027	IR BUR.SPUD ORF. - #56 LP	1	EA	
29	014790-000	TUBING, BAKE (NAT)	1	EA	
NI	014791-000	TUBING, BAKE, LP	1	EA	
30	019343-000	TUBING, FLEX 80"	1	EA	
31	PD020032	SRW-8(A)X3/8"PH.WFR HD 7/16DIA*NICL	2	EA	
32	PB070058	Cooktop Gasket	1	EA	
33	014196-000	SUPPORT, PAN, DESIGNER	1	EA	
34	014199-000	COVER, REGULATOR BASE	1	EA	
35	014540-000	SUPPORT,BURNER BOX, RR, DCCG130	1	EA	
36	014543-000	TRIM, SIDE, LF, DESIGNER	1	EA	
37	014202-000	SUPPORT, ORIFICE HOLDER	2	EA	
38	PD020004	10X3/8PH.HD.TYPE 25 REPL PD040125	8	EA	
NI	PB040254	#49 NAT	1	EA	
39	PB040274	NO.58 - NAT	1	EA	
40	PD020159	DGSU BURNER BASE SCREW	8	EA	
NI	PB040255	NO.52 NAT	1	EA	
41	PB040271	#60 LP	1	EA	
42	PB050069	D-BASE	1	EA	
43	PB050070	C-BASE	1	EA	
44	PA080102	DGRT-D COMPLETE BURNER HEAD ASSEMBLY	1	EA	
45	PA080101	DGRT-C COMPLETE BURNER HEAD ASSEMBLY	1	EA	

NON
ILLUSTRATED PART





Item	Part No.	Name	Qty	Uom	NOTES
NI	001754-000	HARNESS POWER DISCONNECT	1	EA	
NI	PE070036	NYLON CABLE TIES -7"	1	EA	
NI	000647-000	IRIS IGNITOR WIRE, FRONT BURNER	2	EA	
NI	006766-000	IRIS IGNITOR WIRE, BACK BURNER	2	EA	



Appendix A:Pages Index

CAVITY INTERIOR 1
CONTROL AREA 2
DOOR ASSEMBLY 3
LOWER UNIT AND SIDE PANELS 4
REAR SHEET METAL 5
SURFACE COOKING AREA 6
WIRING 7



Appendix B:Parts Index

000042-000	3	013700-000	3
000647-000	7	013986-000	6
001754-000	7	014194-000	3
002926-000	2	014196-000	6
003187-000	1	014199-000	6
003515-000	2	014202-000	6
003801-000	4, 6	014247-000	2
003860-000	1, 4, 5, 6	014261-000	3
004285-000	5	014489-000	2
004626-000	1	014540-000	6
005280-000	4	014543-000	6
005311-000	1	014642-000	4
005329-000	1	014748-000	1
005330-000	1	014751-000	1
005475-000	3	014752-000	1
006199-000	4	014754-000	1
006766-000	7	014756-000	1
007008-000	1	014764-000	4
007147-000	2	014765-000	4
007278-000	1	014789-000	6
007400-000	4	014790-000	6
007484-000	4	014791-000	6
007583-000	3	014870-000	1
008276-000	3	014922-000	1
008971-000	3	014923-000	1
008974-000	3	014924-000	1
009112-000	4	014926-000	3
009602-000	3	015106-000	6
013213-000	2	015170-000	2
013290-000	3	015174-000	2
013659-000	4	015280-000	2
013660-000	4	015831-000	4
013661-000	4	015865-000	3
013662-000	6	015931-000	5
013663-000	6	015990-000	2
013670-000	6	016458-000	1
013671-2211	2	016476-000	6
013676-000	3	016477-000	6
013679-000	3	016961-002	3
013689-000	3	016961-003	3
		016961-004	3



016961-005	3	016962-020	3
016961-006	3	016962-021	3
016961-007	3	016962-022	3
016961-008	3	016962-023	3
016961-009	3	016962-024	3
016961-010	3	016962-025	3
016961-011	3	016962-026	3
016961-012	3	016962-027	3
016961-013	3	017177-000	1
016961-014	3	019162-000	1
016961-015	3	019173-000	3
016961-016	3	019175-000	4
016961-017	3	019176-000	4
016961-018	3	019343-000	6
016961-019	3	019359-000	4
016961-020	3	019360-002	4
016961-021	3	019360-003	4
016961-022	3	019360-004	4
016961-023	3	019360-005	4
016961-024	3	019360-006	4
016961-025	3	019360-008	4
016961-026	3	019360-009	4
016961-027	3	019360-010	4
016962-002	3	019360-012	4
016962-003	3	019360-013	4
016962-004	3	019360-015	4
016962-005	3	019360-016	4
016962-006	3	019360-017	4
016962-007	3	019360-018	4
016962-008	3	019360-019	4
016962-009	3	019360-020	4
016962-010	3	019360-021	4
016962-011	3	019360-022	4
016962-012	3	019360-023	4
016962-013	3	019360-024	4
016962-014	3	019360-025	4
016962-015	3	019360-026	4
016962-016	3	019360-027	4
016962-017	3	020409-000	1
016962-018	3	023883-000	2
016962-019	3	023884-000	2



024415-000	4	PB040255	6
024416-000	4	PB040271	6
031679-000	1	PB040274	6
031961-000	4	PB040275	6
032238-000	5	PB050067	6
034880-000	4	PB050069	6
044178-000	4	PB050070	6
049718-402	1	PB050071	6
A1002596	1	PB050072	6
A2001361	1	PB060030	1
A20014089	4	PB060044	1
A2002595	1	PB070058	6
A2004428	1	PD010003	3
A2008467	1	PD010012	2
B2005589	1	PD020004	4, 6
B21011410	6	PD020010	4
E91011410BK	6	PD020014	1, 3
G3001876	1	PD020032	3, 6
G40015469	2	PD020048	1, 1, 2
M0210443	1	PD020060	6
PA010093	2	PD020061	1, 4
PA010163	2	PD020063	3
PA020056	4	PD020067	1, 4, 6
PA020058	2	PD020159	6
PA080083	6	PD020232	1, 4
PA080099	6	PD030109	4
PA080100	6	PD040004	2
PA080101	6	PD040005	4, 6
PA080102	6	PD040036	1
PA080103	6	PE050057	1
PA080105	6	PE050208	6
PA080107	6	PE060039	3
PB020198	2	PE070036	7
PB040026	6	PJ030022	6
PB040027	6	PJ030039	4
PB040170	1		
PB040171	1		
PB040200	6		
PB040204	6		
PB040236	6		
PB040254	6		