

dacor®

The Life of the Kitchen.®

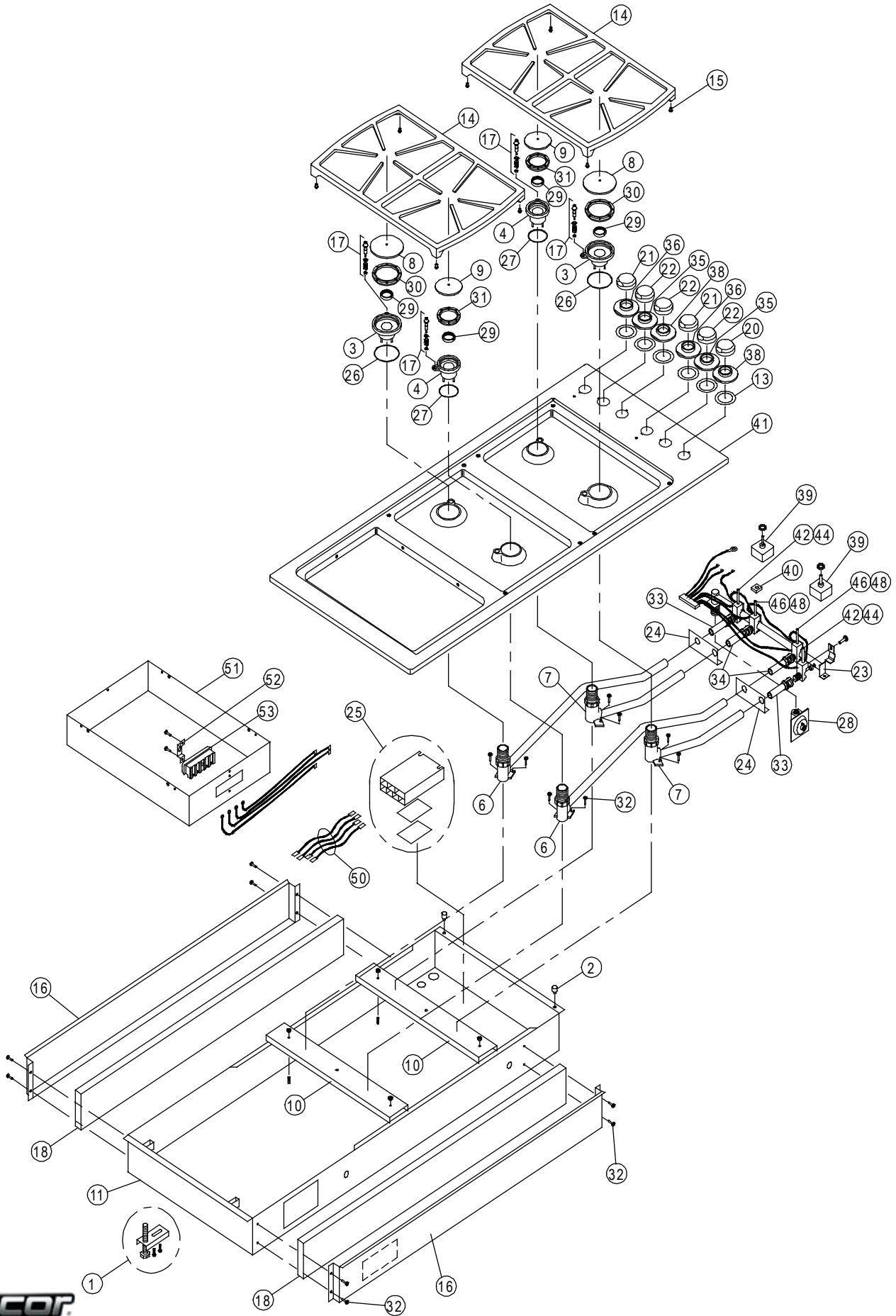
PARTS CATALOG

SGM464EM Cooktop

Page	Description
2	Assembly
3	Parts

Revised 04-22-2013

SGM464EM - Assembly



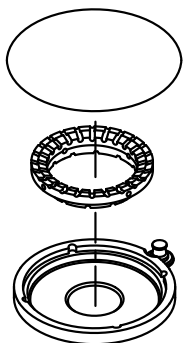
SGM464EM - Parts

ITEM	PART#	Description
1	12269	Bracket, Hold Down (set of 2)
2	83578	Bumper, Rubber (Chassis)
3	62952	Burner Base (C)
4	62951	Burner Base (B)
6	82678	Burner Tube (Long)
7	82677	Burner Tube (Short)
8	86523BM	Burner Cap (C)
9	86524BM	Burner Cap (B)
10	26209	Channel Support
11	27435	Chassis Box
13	82973	Gasket, Spill Protector
14	72467SB ¹	Grate ¹
15	66916	Grate, Support Pad (set of 4)
16	26013	Heat Shield
17	76482-001 ²	Ignitor Assy. ²
18	26056	Insulation Heat Shield (2 Pcs.)
20	82977	Knob with Logo
21	82974	Knob w/o Logo Electric
22	82974	Knob w/o Logo Gas
23	86473	Manifold w/o Valves
24	26035	Manifold Bracket
25	86526	Spark Module Assy.
26	86397	O-Ring (C)

ITEM	PART#	Description
27	86937	O-Ring (B)
28	82540	Regulator
29	86405	Ring, Nut
30	86407	Ring, Burner (C)
31	86408	Ring, Burner (B)
32	83306	Screw
33	86373	Air Shutter (C)
34	86372	Air Shutter (B)
35	82972SSC	Spill Protector, Center
36	86539	Spill Protector, Electric
38	62284SSR	Spill Protector, Right
39	82521	Switch, Module
40	103789	Switch, Micro, Ignition
41	27438BP	Top Frame, Black
	27557S	Top Frame, Stainless
42	86490	Valve (Large LP)
44	86488	Valve (Large Nat)
46	86489	Valve (Medium LP)
48	86487	Valve (Medium Nat)
50	86531	Wire Harness, Ignitors
51	27439B	Module Enclosure
52	83250	Clip
53	13020	Ceramic Block

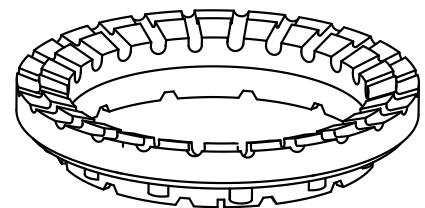
¹Effective with revision G of the cooktop, the grates were redesigned. On cooktops manufactured before revision G, both grates may need to be replaced to make sure they match.

²**IMPORTANT:** The ignitor assembly and burner rings were redesigned on later versions of the cooktop. The older designs are no longer available. The new ignitor design only works with the newer burner ring design, while the new burner ring design is compatible with all versions of the ignitor assembly. When replacing the ignitor assembly check to make sure the latest version of the burner ring is installed. If the burner ring has a hole on its side (see diagrams below), it must be replaced with correct size (B or C) of the newer version. Items 30 and 31 above list the part number for the newer versions of the burner ring.



Burner Ring with Hole (old)

Does not work with new version of ignitor assembly.



Burner Ring without Hole (new)

Works with all version of ignitor assembly.