

dacor®

The Life of the Kitchen.®

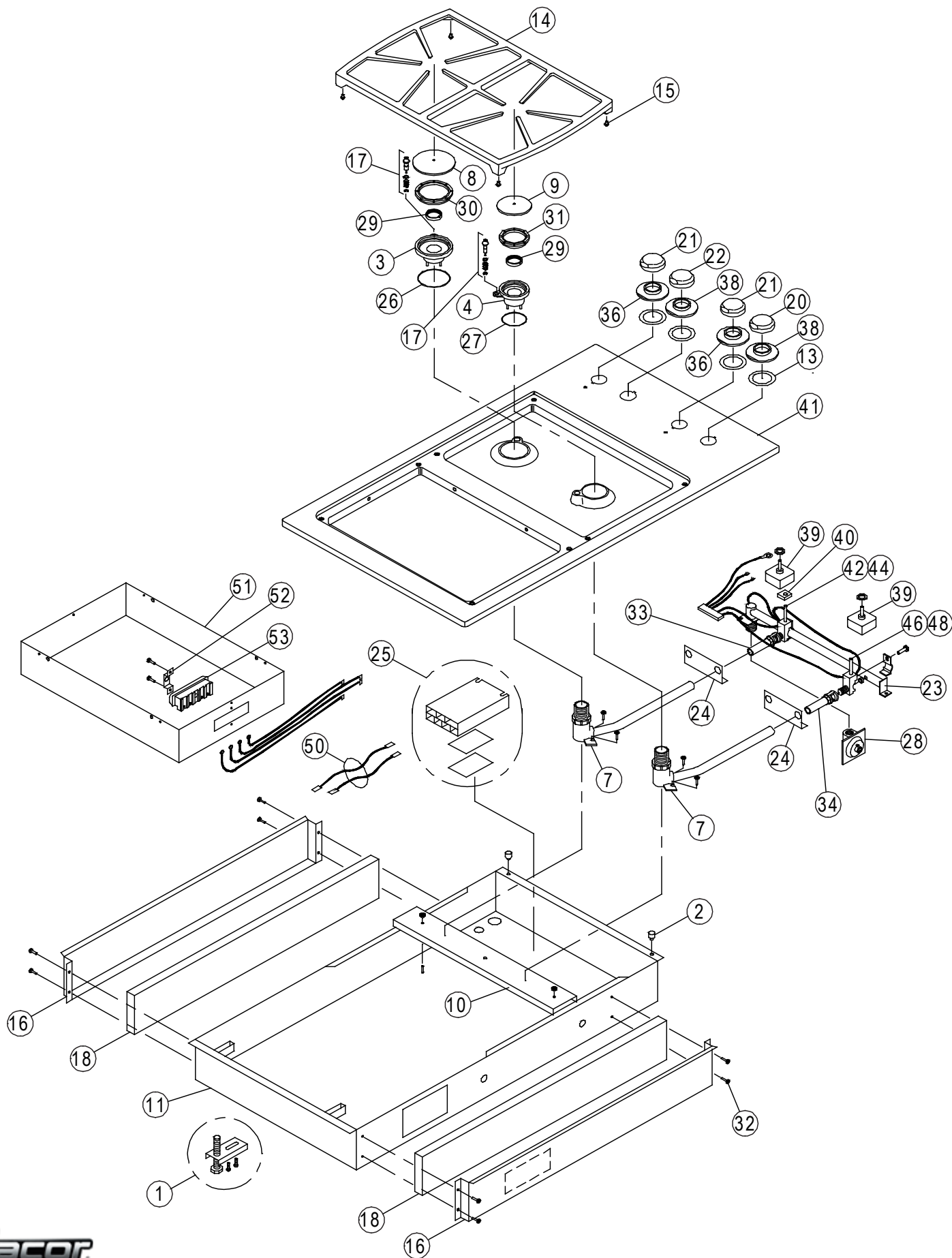
PARTS CATALOG

SGM362EM Cooktop

Page	Description
2	Assembly
3	Parts

Revised 04-22-2013

SGM362EM - Assembly



SGM362EM - Parts

ITEM	PART#	Description
1	12269	Bracket, Hold Down (set of 2)
2	83578	Bumper, Rubber (Chassis)
3	62952	Burner Base (C)
4	62951	Burner Base (B)
7	82675	Burner Tube (Short)
8	86523BM	Burner Cap (C)
9	86524BM	Burner Cap (B)
10	26209	Channel Support
11	27436	Chassis Box
13	82973	Gasket, Spill Protector
14	82109BM	Grate
15	66916	Grate, Support Pad (set of 4)
16	26012	Heat Shield
17	76482-001 ¹	Ignitor Assy. ¹
18	26055	Insulation Heat Shield (set of 2)
20	82977	Knob with Logo
21	82974	Knob w/o Logo Electric
22	82974	Knob w/o Logo Gas
23	86472	Manifold w/o Valves
24	26035	Manifold Bracket
25	86526	Spark Module Assy.
26	86397	O-Ring (C)

ITEM	PART#	Description
27	86937	O-Ring (B)
28	82540	Regulator
29	86405	Ring, Nut
30	86407	Ring, Burner (C)
31	86408	Ring, Burner (B)
32	83306	Screw
33	86373	Air Shutter (Large)
34	86372	Air Shutter (Medium)
36	86540	Spill Protector
38	62284SSR	Spill Protector
39	82521	Switch, Module
40	103789	Switch, Micro (Ignition)
41	27437BP	Top Frame
42	86490	Valve (Large LP)
44	86488	Valve (Large Nat)
46	86489	Valve (Medium LP)
48	86487	Valve (Medium Nat)
50	86533	Wire Harness, Ignitors
51	27439B	Module Enclosure
52	83250	Clip
53	13020	Ceramic Block

¹ **IMPORTANT:** The ignitor assembly and burner rings were redesigned on later versions of the cooktop. The older designs are no longer available. The new ignitor design only works with the newer burner ring design, while the new burner ring design is compatible with all versions of the ignitor assembly. When replacing the ignitor assembly check to make sure the latest version of the burner ring is installed. If the burner ring has a hole on its side (see diagrams below), it must be replaced with correct size (B or C) of the newer version. Items 30 and 31 above list the part number for the newer versions of the burner ring.

