



LET THE SHOW BEGIN

PARTS CATALOG

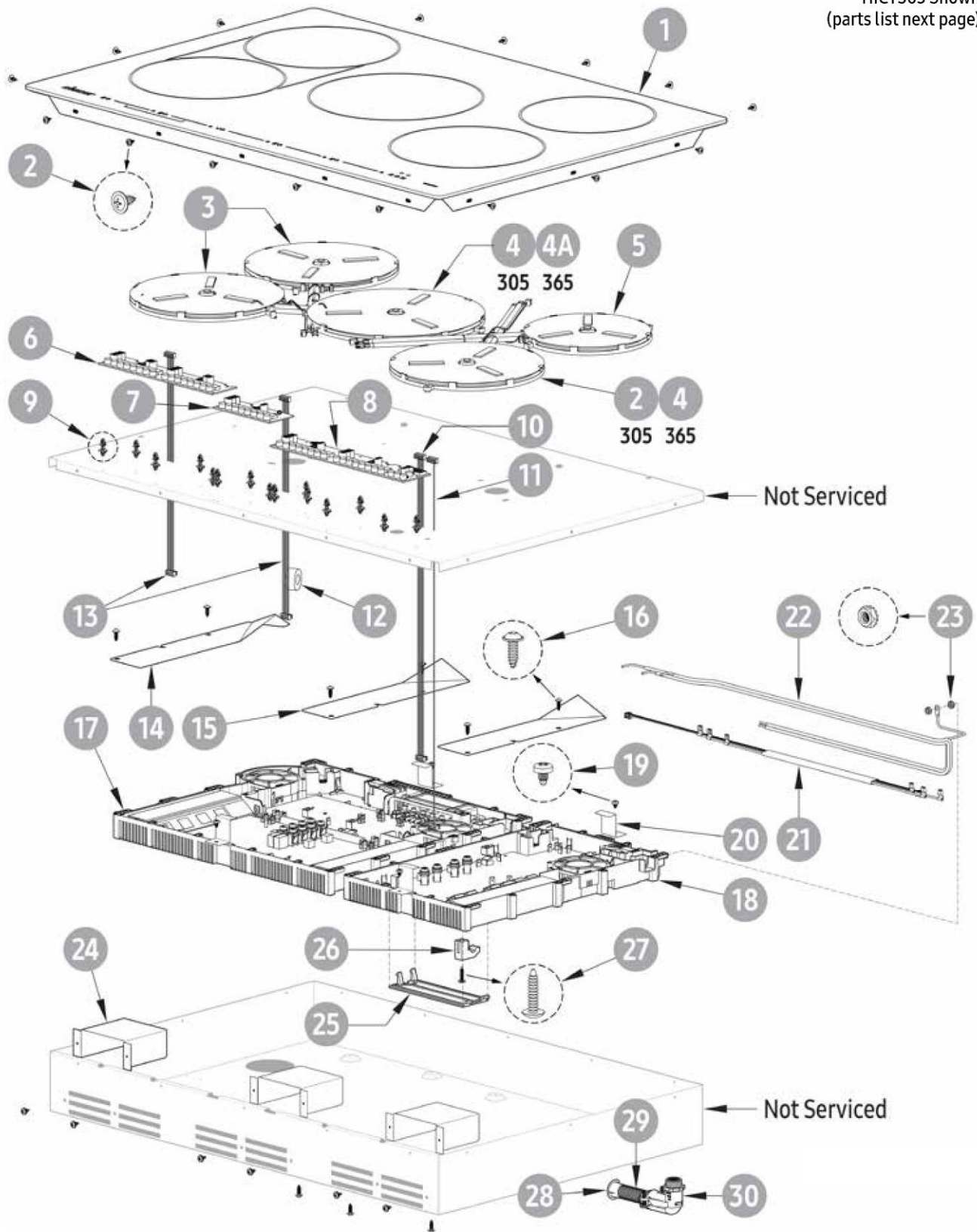
HICT305/365

Heritage Induction Cooktop

Assembly Drawings	
Click Page	Description
2	Cooktop Assembly
3	Cooktop Assembly Parts List

HICT305/365 Chassis Assembly

HICT305 Shown
(parts list next page)



HICT305/365 Chassis Assembly Parts List

Item	HICT305 PN	HICT365 PN	Description
1	702513	702390	Induction Glass Top
2	83263	83263	Phillips Round Washer-Head Screw
3	109287	109287	3.0kW/L=250mm/180 Inductor Coil
4	109288	109288	3.7kW/L=250mm/210 Inductor Coil
4A	—	109290	3.7KW/L=200/260 Inductor Coil
5	109289	109289	2.2kW/L=250mm/145 Inductor Coil
6	109294	109294	Bridge Control Slave 1
7	109295	109295	Single Slave 2 Control
8	109312	109293	Master Control
9	109313-02	109313-02	PCB Locking Support
10	107522	107522	Inter/Gen Wire Harness
11	109299	109299	Inter/Gen Wire Harness
12	109302	109302	Ferrite Center
13	109301	109301	Inter/Gen Wire Harness
14	109357-02	109357-02	Left Generator Heat-Sink Cover
15	109357-01	109357-01	Right Generator Heat-Sink Cover
16	83709	83709	Black Oxide #8 x 1/2" Torx Screw
17	109291	109291	3-Burner Generator Master
18	109292	109315	Slave 2-Burner Master
19	83001	83001	#8 x 1/4" Phillips Pan Head Screw
20	109358	109358	Generator Clamp
21	109297	109297	Generator Harness
22	109342	109342	Main Wire Harness
23	83048	83048	#8 – 32 Hex Keps Nut
24	109526	109526	Duct Chassis
25	109414	109414	Generator Cover
26	109343	109343	Plastic Strain Relief
27	83010	83010	#8 x 3/4" Phillips Pan Head Screw
28	83133	83133	Red 1/2" Bushing
29	26424	26424	1/2" Flex Conduit Cut 48" – CS
30	82195	82195	1/2" 90° Squeeze Connector

[Return to Page 1](#)