



The Life of the Kitchen.®



# CPO130 Wall Oven

**IMPORTANT:** This product may have some parts that are **No Longer Available (NLA)**. If the part you need is no longer available, please contact Dacor for a possible solution:

### DACOR CARES PROGRAM NLA Part Locator Service

**Customer Contact Number:**

(800) 793-0093 ex. 2813  
Hours: 6:00 AM - 5:00 PM Pacific Time

**Service Agent/Technician Contact Number:**

(800) 793-0093 ex. 3814  
Hours: 7:00 AM - 4:00 PM Pacific Time

**Web Inquiries:** [www.dacor.com/dacorcares](http://www.dacor.com/dacorcares)   **Email Inquiries:** [dacorcares@dacor.com](mailto:dacorcares@dacor.com)

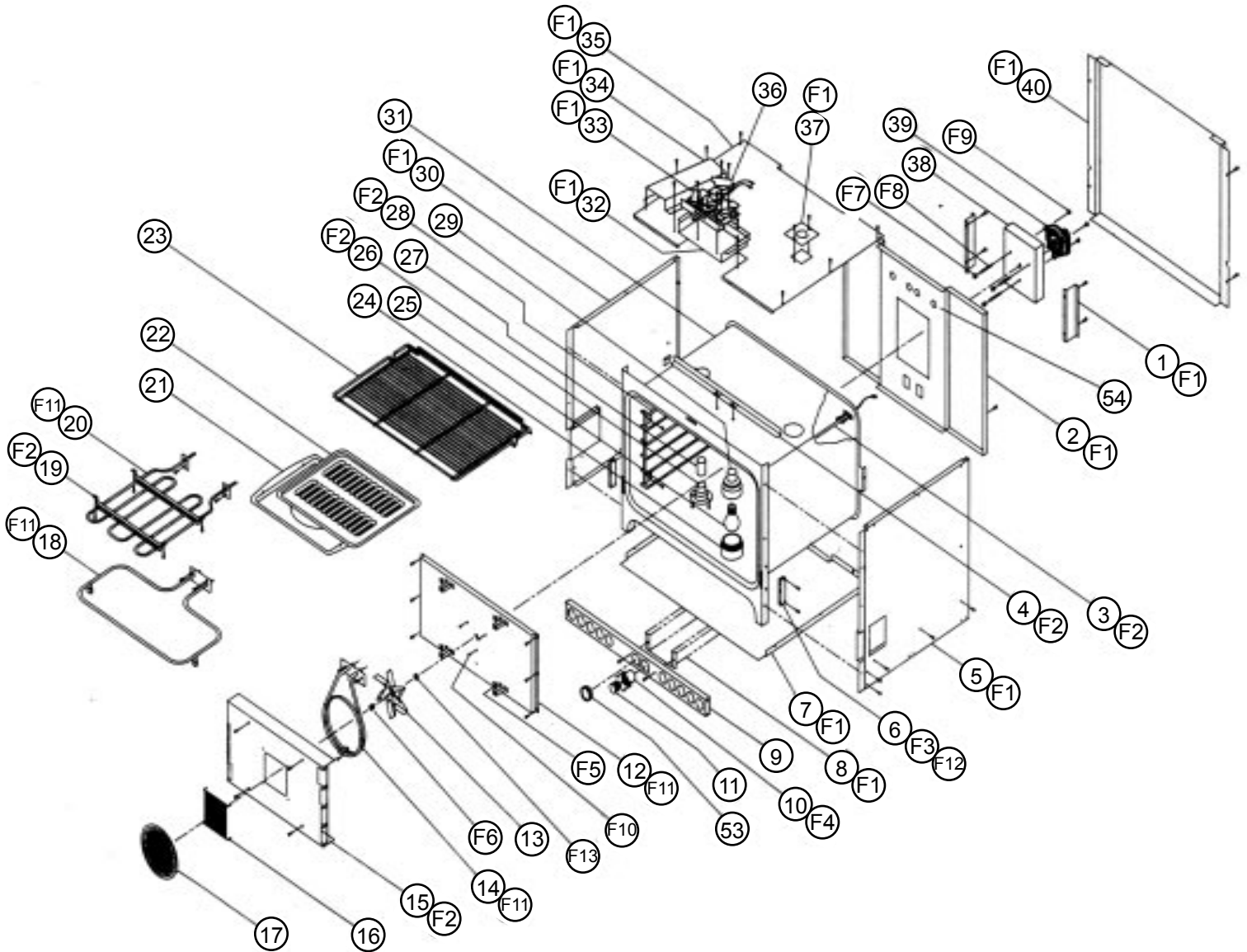
Please provide the following information:

- Your name and phone number
- Product model number
- Product serial number
- The part number(s) you need

Page	Description
2	Chassis Assembly
3	Chassis Parts
4	Door Assembly
5	Door Parts
6	Trim/Sub-Chassis Assembly
7	Trim/Sub-Chassis Parts

Revised 02-14-2012

# CPO130 - Wall Oven Chassis Assembly



Part no longer available? Contact Dacor: (800) 793-0093 ex. 3814

# CPO130 - Wall Oven Chassis Parts

Item	Part #	Description
1	26548	STIFFENER BRACKET, CASE BACK
2	26542	CASE BACK
3	86663	TEMPERATURE SENSOR
4	12322	OVEN TOP BRACE ASSEMBLY
5	27404	CASE SIDE, RIGHT
6	82851	HINGE RECEPTACLE
7	26569	CASE BOTTOM
8	26552	WIRE RACEWAY (CSA)
9	26549	STIFFENER, CASE BOTTOM AND SIDES
10	82506	FUSE SOCKET (CSA)
11	83112	FUSE, 30 AMP (CSA)
12	27411BP	INSULATION BOX
13	82651	CONVECTION FAN BLADE
14	82887	CONVECTION ELEMENT, 240V
	82251	CONVECTION ELEMENT, 208V
15	26556BP	CONVECTION BAFFLE
16	82659	FINGER GUARD
17	82891	CONVECTION FILTER
18	86745	BAKE ELEMENT, 240V
	82881	BAKE ELEMENT, 208V
19	26142	BROIL ELEMENT SUPPORT
20	82099	BROIL ELEMENT, 240V
	82249	BROIL ELEMENT, 208V
21	82107	BROILER PAN
22	82106	BROILER GRILL
23	82661	CONVECTION OVEN RACK

Item	Part #	Description
24	86123	OVEN LIGHT ASSEMBLY, LENS
25	82089	APPLIANCE LIGHT BULB, 40W
26	82826	SMOKE ELIMINATOR
27	28250	EXHAUST TUBE, SHORT
28	82650	RACK SUPPORT, BLACK PORCELAIN
29	82863	OVEN LIGHT ASSEMBLY, HOUSING
30	27405	CASE SIDE, LEFT
31	27408BP	OVEN CELL
32	26538	LATCH PLATE
33	86166	DOOR LATCH
34	26558-1	EXHAUST DUCT, CPO130
35	26539	CASE TOP
36	26565	LATCH BAFFLE
37	26560	COVER PLATE, LIGHT HOUSING
38	26561	MOUNTING PLATE, CONVECTION MOTOR
39	82647	CONVECTION MOTOR
40	26537	BACK SHIELD, CPO130
53	83149	HOLE PLUG, CPO130, (CSA)
54	83056	HEYCO BUSHING

## Fasteners

Item	Part #	Description
F1	83023	SCREW, #10 X 3/8 HEX WASHER HEAD (UL)
F2	83023	SCREW, #10 X 3/8 HEX WASHER HEAD (CSA)
F3	83534	SCREW, #8 X 3/8" ENAMEL PANEL
F4	83024	#8 X 3/8 PHILLIPS PAN HEAD (UL, CSA)
F5	83120	NUT, 8-32 TINNEMAN
F6	82647	NUT, CONVECTION FAN BLADE RETAINING
F7	83333	SPACER, 8-32 X 1/2 HEX X 7/16" LONG
F8	83349	STUD, 8-32 X 1-5/32"
F9	83048	NUT, 8-32"
F10	83341	SCREW, 8-32 X 5/16" PHILLIPS PAN HEAD
F11	83019	SCREW, #8 X 3/8 HEX WASHER HEAD
F12	83340	WASHER, #10 EXT. TOOTH LOCK
F13	82647	WASHER, FLAT, CONVECTION FAN BLADE

Part no longer available? Contact Dacor: (800) 793-0093 ex. 3814





# CPO130 - Wall Oven Door Parts

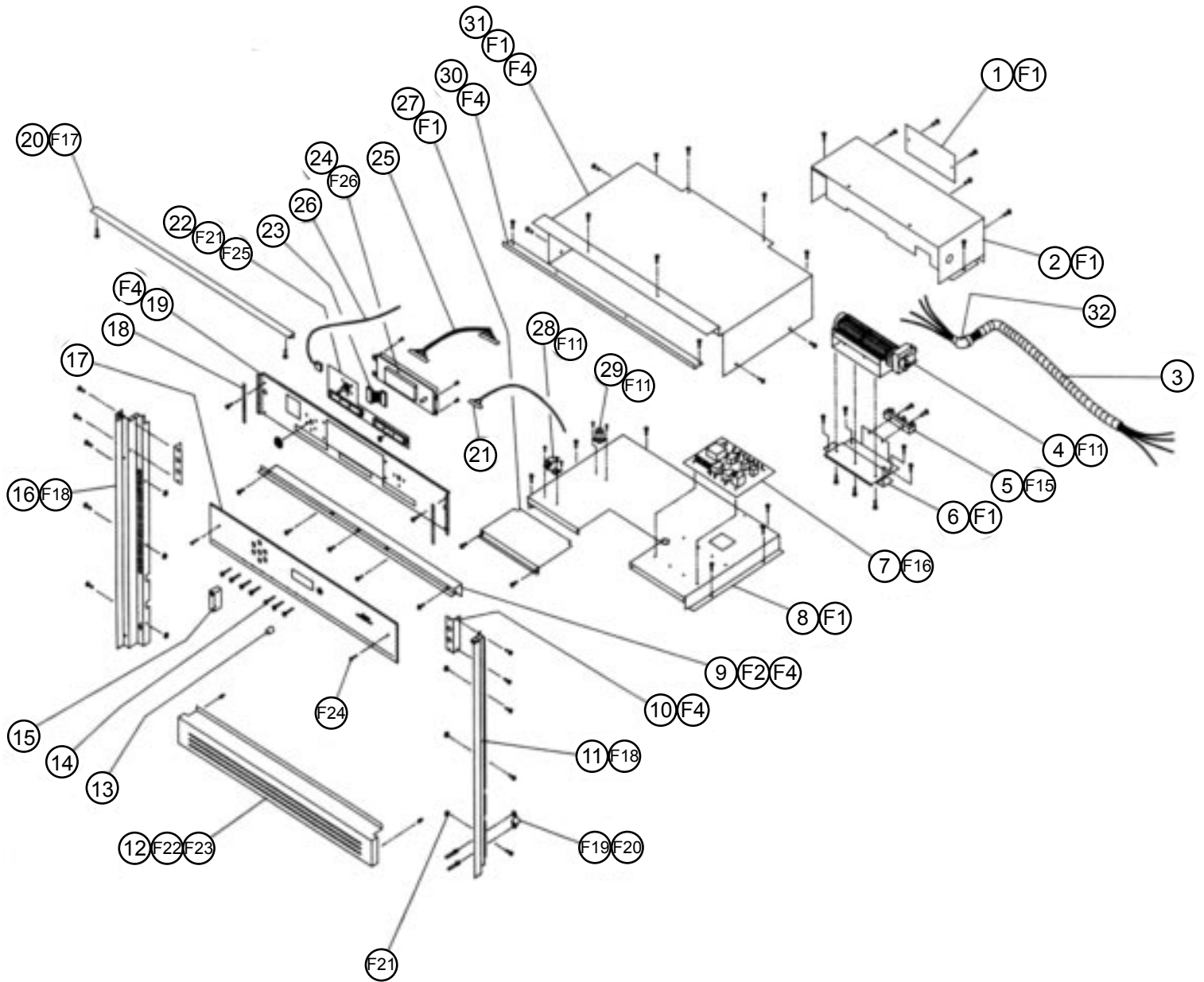
Item	Part #	Description
<b>1</b>	27111BP	INNER DOOR LINER - BLACK PORCELAIN
<b>2</b>	13101	DOOR INSULATION
<b>3</b>	82218	WINDOW PACK
<b>4</b>	82124	DOOR GASKET
<b>5</b>	27415BP	OUTER DOOR LINER - BLACK PORCELAIN
<b>6</b>	83224	TAPE, DOUBLE SIDED, .05W X 5"L
<b>7</b>	82849	HINGE ASSEMBLY
<b>8</b>	26400B	MOUNTING BRACKET, INNER DOOR GLASS, BLACK
<b>9</b>	82213	GLASS HEAT BARRIER
<b>10</b>	26393	MOUNTING BRACKET, OUTER DOOR GLASS (specify color)
<b>11</b>	27414B	DOOR GLASS FRAME, BLACK
<b>12</b>	83224	TAPE, DOUBLE SIDED, .05"W X 4.75L
<b>13</b>	83224	TAPE, DOUBLE SIDED, 0.5"W X 17.625"L
<b>14</b>	82862	OUTER DOOR GLASS (specify oven color)
<b>15</b>	26563	SUPPORT BRACKET, OUTER DOOR GLASS (specify oven color)
<b>16</b>	26428	RETAINING BRACKET, NUT PLATE
<b>17</b>	13056	NUT PLATE, DOOR HANDLE
<b>18</b>	13236	DOOR HANDLE ASSEMBLY (specify color)
<b>18A</b>	82869	END CAP, RT (specify color)
<b>18B</b>	27348	HANDLE WELDMENT (specify color)
<b>18C</b>	82870	END CAP, LEFT (specify color)
<b>18D</b>	26555BS	HANDLE SUPPORT
<b>19</b>	83552	SPRING CLIP, HINGE
	12320	COMPLETE DOOR ASSEMBLY (not shown, specify oven color)

Fasteners		
Item	Part #	Description
<b>F3</b>	83534	SCREW, #8 X 3/8" ENAMEL PANEL
<b>F24</b>	83296	SCREW, 10-24 BUTTON HEAD (BLACK)
	83297	SCREW, 10-24 BUTTON HEAD (WHITE)
	83298	SCREW, 10-24 BUTTON HEAD (AL-MOND)
<b>F29</b>	83018	SCREW, 10-24 X 5/8" PHILLIPS TRUSS HEAD
<b>F30</b>	83263	SCREW, #8 X 3/8 PHILLIPS WAFER HEAD
<b>F31</b>	83022	SCREW, #10 X 1/2 PHILLIPS TRUSS HEAD
<b>F32</b>	83336	SCREW, 8-32 X 1/2" PHILLIPS PAN HEAD, BLACK

Part no longer available? Contact Dacor: (800) 793-0093 ex. 3814



# CPO130 - Trim/Sub-Chassis Assembly



# CPO130 - Trim/Sub-Chassis Parts

Item	Part #	Description
1	26357	TERMINAL BLOCK COVER
2	27422	BACKSHIELD, TOP
3	26420	1/2" FLEX CONDUIT, 60" CPO130 UL
4	82889	COOLING BLOWER
5	82151	TERMINAL BLOCK
6	27332	MOUNTING BRACKET, TERMINAL BLOCK AND BLOWER
7	82837	RELAY PCB, CPO130
8	27410	SUB-CHASSIS, CPO130
9	26553	CONTROL PANEL TRIM (specify oven color)
10	26550	SUPPORT BRACKET, SUB PANEL
11	27419	TRIM POST, RIGHT - CPO130 (specify oven color)
12	27409	TRIM PANEL, CPO130 (specify oven color)
13	82821	KNOB, TIME/TEMP (specify oven color)
14	82820	PUSH BUTTON (specify oven color)
15	82822	KNOB, MODE SELECTOR (specify oven color)
16	27420	TRIM POST, LEFT
17	82853	CONTROL PANEL GLASS, CPO130 (specify oven color)
18	83240	FOAM TAPE, SINGLE SIDED 3.75" LONG
19	26551	SUB PANEL
20	82855	TOP TRIM EXTRUSION (specify oven color)
21	82871	HARNESS ASSEMBLY, SENSOR - DOOR LATCH, CPO130
22	82810	ROTARY SWITCH PCB, CPO130
23	82847	HARNESS ASSEMBLY, ERC TO ROTARY SW CPO130
24	82874	OVEN CONTROL, CPO130
25	82844	HARNESS ASSEMBLY, ERC TO MAIN RELAY PCB, CPO130

Item	Part #	Description
26	82842	HARNESS ASSEMBLY, OVEN LIGHT, CPO130
27	26541	LATCH COVER
28	82860	COOLING FAN SWITCH
29	82861	HI TEMP LIMIT SWITCH
30	26567	EXTRUSION SUPPORT BRACKET
31	26566	TOP SHIELD
32	82195	CONDUIT CONNECTOR, 90 DEG, 1/2" FLEX, CPO130

Fasteners		
Item	Part #	Description
F1	83023	SCREW, #10 X 3/8 HEX WASHER HEAD (UL)
F2	83023	SCREW, #10 X 3/8 HEX WASHER HEAD (CSA)
F4	83024	#8 X 3/8 PHILLIPS PAN HEAD (UL, CSA)
F11	83019	SCREW, #8 X 3/8 HEX WASHER HEAD
F15	83010	SCREW, #8 X 3/4" PHILLIPS PAN HEAD
F16	83538	PCB STANDOFF, NYLON
F18	83026	SCREW, #10 X 3/4
F20	83262	POP RIVET, 1/8"
F21	83555	FIBER WASHER
F22	83308	NUT, 6-32 KEPS
F23	83539	BALL STUD
F24	83296	SCREW, 10-24 BUTTON HEAD (BLACK)
	83297	SCREW, 10-24 BUTTON HEAD (WHITE)
	83298	SCREW, 10-24 BUTTON HEAD (ALMOND)
F25	83549	SPRING CLIP, 0.35" DIAMETER SHAFT
F26	83559	SCREW, 6-32 X 3/8" THREAD CUTTING